



Omaha CSO Compliance Strategy

NACWA Winter Conference

February 5, 2014



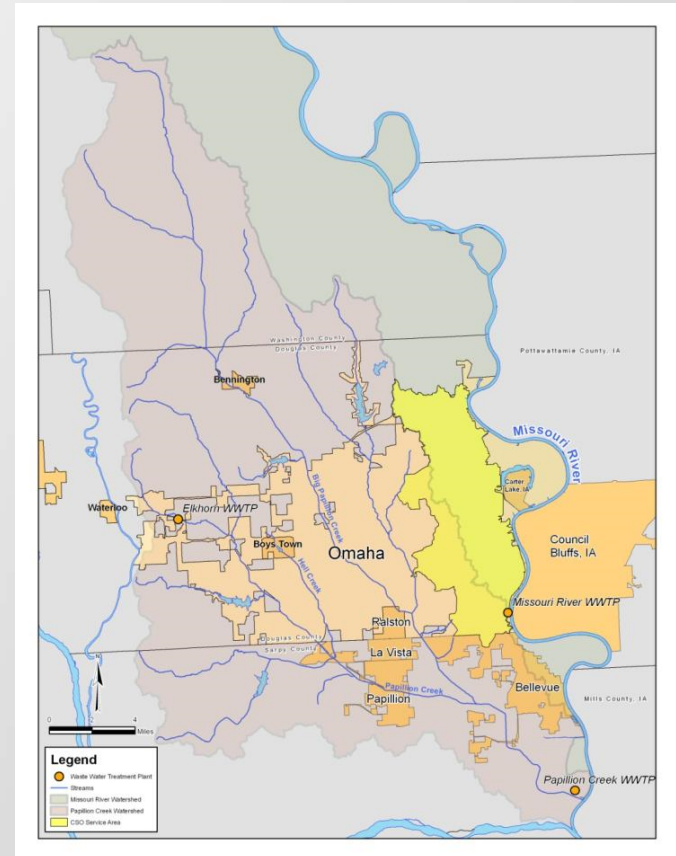
Challenges Facing Omaha

- Meeting the increased requirements of the federal Clean Water Act
- Balancing the following needs:
 - Regulatory compliance
 - Economic affordability
 - Community acceptance
- Find safe places for our state regulators and local elected officials to allow us to act in the best interest of the community



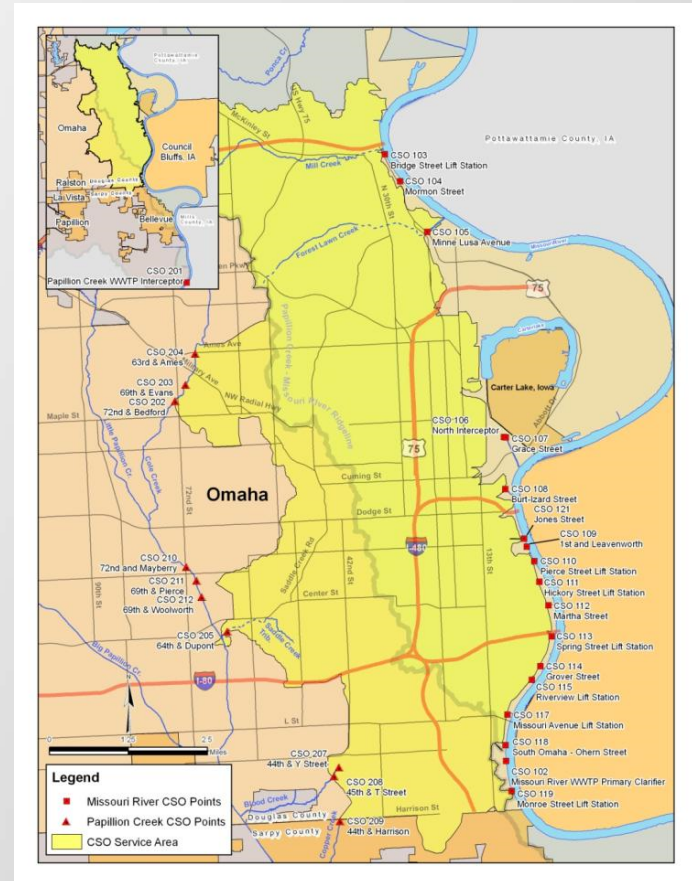
Metro Service Area

- Two regional treatment plants
- 10 wholesale users
- 275 sq mi drainage area
- 600,000 service population

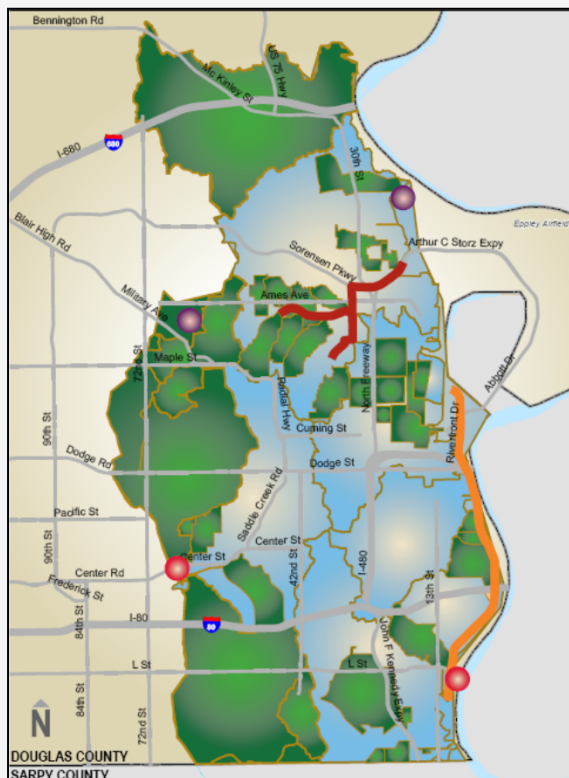


Omaha Sewer System

- 1,950 miles of sewers
 - Eastern half combined
 - Western half separate
- 43 sq mi combined sewer area
 - 28,000 acres
 - 6,200 sq blocks
- 29 CSO outfalls
 - 10 to Papio Creek
 - 19 to Missouri River
 - 3 eliminated



Five Major Elements of Final Long Term Control Plan



Targeted Sewer Separation Projects

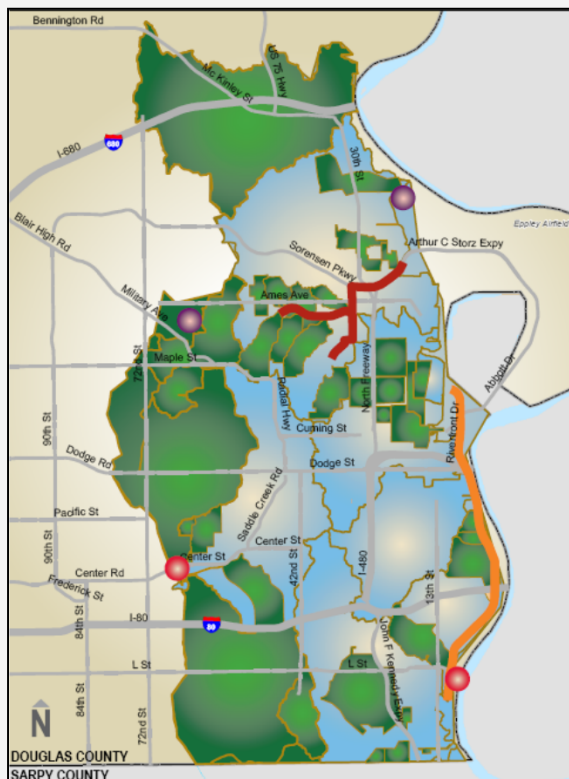


Two High-Rate Treatment Facilities



One Deep Conveyance Tunnel

Five Major Elements of Final Long Term Control Plan



Two Underground Storage Tanks



One Large Stormwater Sewer

Early History

- 1972 Clean Water Act passed
- 1989 EPA releases CSO Strategy
- 1990 Omaha develops sewer separation plan
- 1994 Omaha submits CSO permit application
- 1994 EPA releases CSO Policy
- 2000 Clean Water Act amended to include CSO Policy Conformance

History Since 2000

- 2001 Omaha receives Sec. 308 request from EPA
- 2002 Omaha CSO permit issued by NDEQ
- 2005 Omaha receives NDEQ letter with LTCP timeline
- 2007 Omaha/NDEQ consent order signed
- 2009 Omaha CSO LTCP submitted to NDEQ
- 2010 LTCP approved by NDEQ
- 2012 Consent order amended to add 3 years to LTCP

Program Status

- \$31.1 M of construction contract completed and closed out
- \$196M of construction under contract
- \$363M of construction under design
- Over \$100M of additional construction work to be contracted in 2014

Program Status

- Updated LTCP Plan revisions ongoing, for submittal to NDEQ in 2014
- Sewer rates for 2015-2018 drafted
- Affordability Assessment updated
- Green Infrastructure study final recommendations
Second Quarter 2014 on up to 5 additional Green Projects
- NETV documentary airing

Lessons Learned

- Earn the trust of your regulator
- Respectfully educate the regulatory staff
- Tell the regulatory authority how you intend to comply rather than ask them what to do
- Provide the regulators with cases where EPA has approved of what you are proposing
- Help the regulator develop confidence to be able to justify their decisions to EPA

Make Your Regulator Part of your CSO Team

“I am truly proud to have been part of the CSO team and appreciate the time, effort and commitment Omaha has made to this project. But mostly, I am proud of the fact that DEQ and the City have made it a cooperative effort instead of an adversarial one. One where friends were made, not enemies.”

Donna Garden
Former NDEQ
NPDES Sec. Spvr.

CSO! Public Website



Clean Solutions for Omaha

CSO! Program

Your Rates

Your Benefits

Long Term Control Plan

Newsroom

Resources

Contact

Welcome to Your Clean Solutions for Omaha! Program

The CSO! Program is designed to improve the water quality in our local rivers and streams.

Today, approximately 52 times each year, raw sewage mixed with stormwater flows into the Missouri River and the Papillion Creek. Through the CSO! Program, we will reduce that number to four times per year.

What's New?

[Omaha World Herald Editorial - "Omaha Sewer Project-Flexibility Would Help"](#)

[Community in Rough on Fontenelle Park's Fate](#)

[Ideas Sought on Future of Fontenelle Park](#)

[View the 2011 CSO Annual Report](#)

Report Street Flooding and Sewer Backups:
402.444.5332

Contact the CSO! Hotline: 402.341.0235



A City of Omaha Public Works Initiative



Creating Jobs

The CSO! Program has increased the need for professional, construction and trained labor jobs. Together with community organizations and Metro Community College, the Program is working with contractors to train individuals and create opportunities in the local workforce.

Projects in Your Area



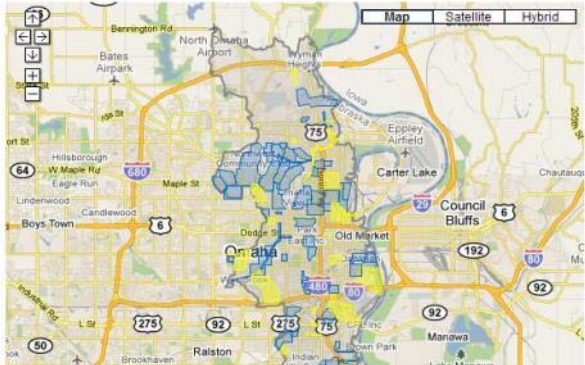
Street Closings


© Copyright 2010-2011 City of Omaha, Nebraska CSO! Control Program

Omaha CSO Project Map

Enter your address to find projects near you.
Click on a shape to find information about the project.

Map Satellite Hybrid





Clean Solutions for Omaha

Home

CSO! Program

Your Rates

Your Benefits

Newsroom

Resources

Contact

Contact

Can't find what you're looking for? Visit our [FAQs](#) for answers to common questions or feel free to send us a note.

Name

Email Address
(Please enter a valid email address with no spaces so we can respond to your comment.)

Comment/Question

If you'd like to speak with someone about Clean Solutions for Omaha, please call:

Marty Grate
Environmental Services Manager
City of Omaha
402-444-5225


[Please let us know if you experience any problem with this site.](#)

CSO Hotline: 402.341.0235

CSO email

Information on who is working in your neighborhood

Report street flooding and sewer backups: 444.5332



CSO!
Clean Solutions for Omaha

Questions & Discussion

- Marty Grate – City of Omaha Public Works Department, Environmental Services Manager
 - 402-444-5225
 - mgrate@ci.omaha.ne.us
 - www.OmahaCSO.com