



CITY OF LOS ANGELES

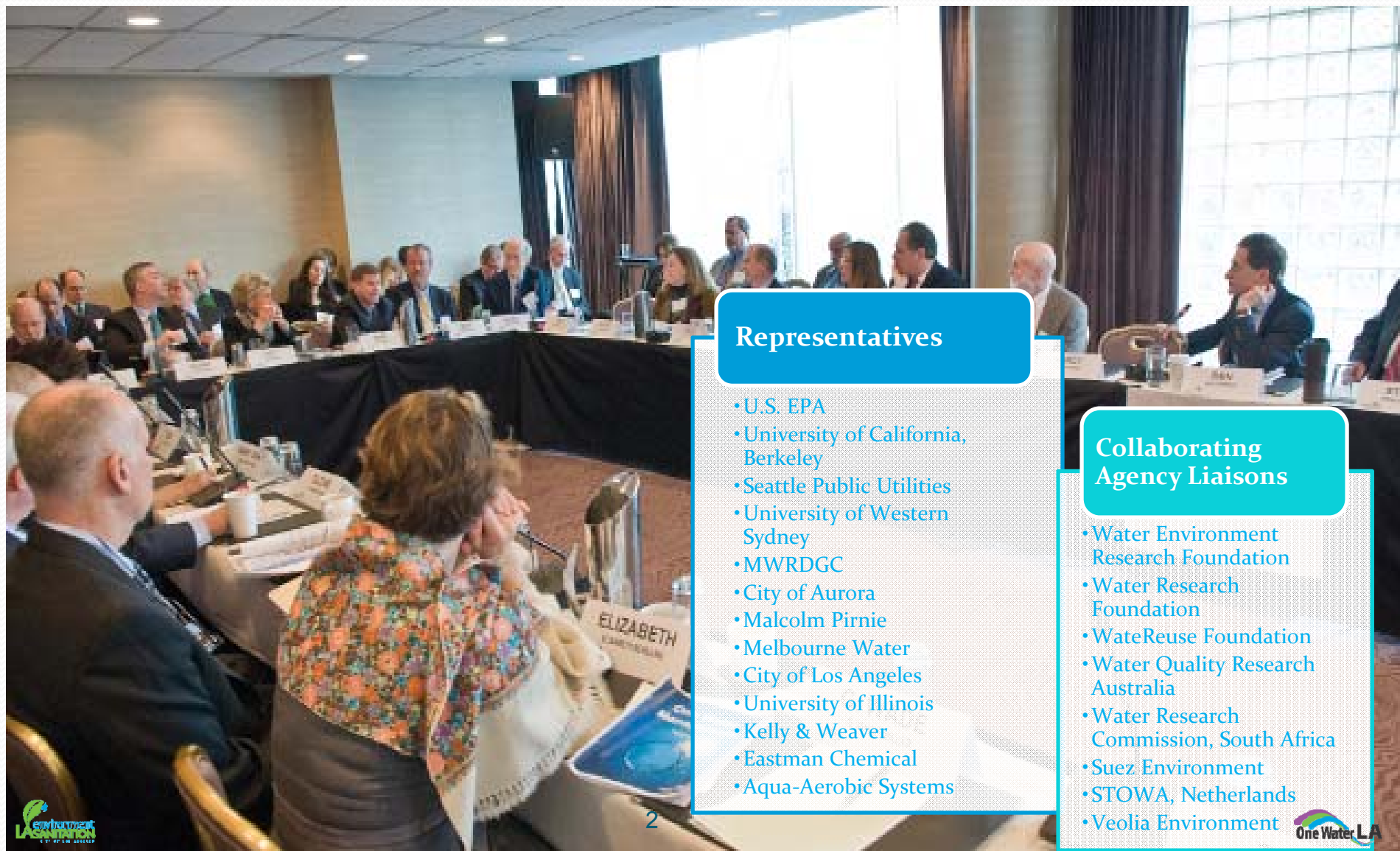


Moving To One Water LA

Using Source Control To Sustain The Transition

May 14, 2014

WERF Exploratory Team



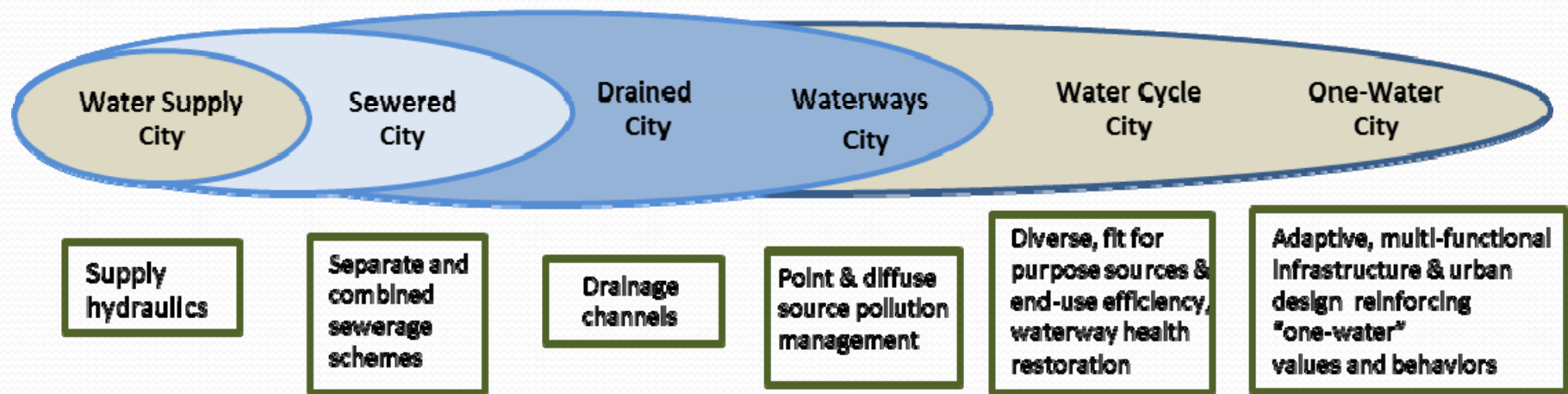
Representatives

- U.S. EPA
- University of California, Berkeley
- Seattle Public Utilities
- University of Western Sydney
- MWRDGC
- City of Aurora
- Malcolm Pirnie
- Melbourne Water
- City of Los Angeles
- University of Illinois
- Kelly & Weaver
- Eastman Chemical
- Aqua-Aerobic Systems

Collaborating Agency Liaisons

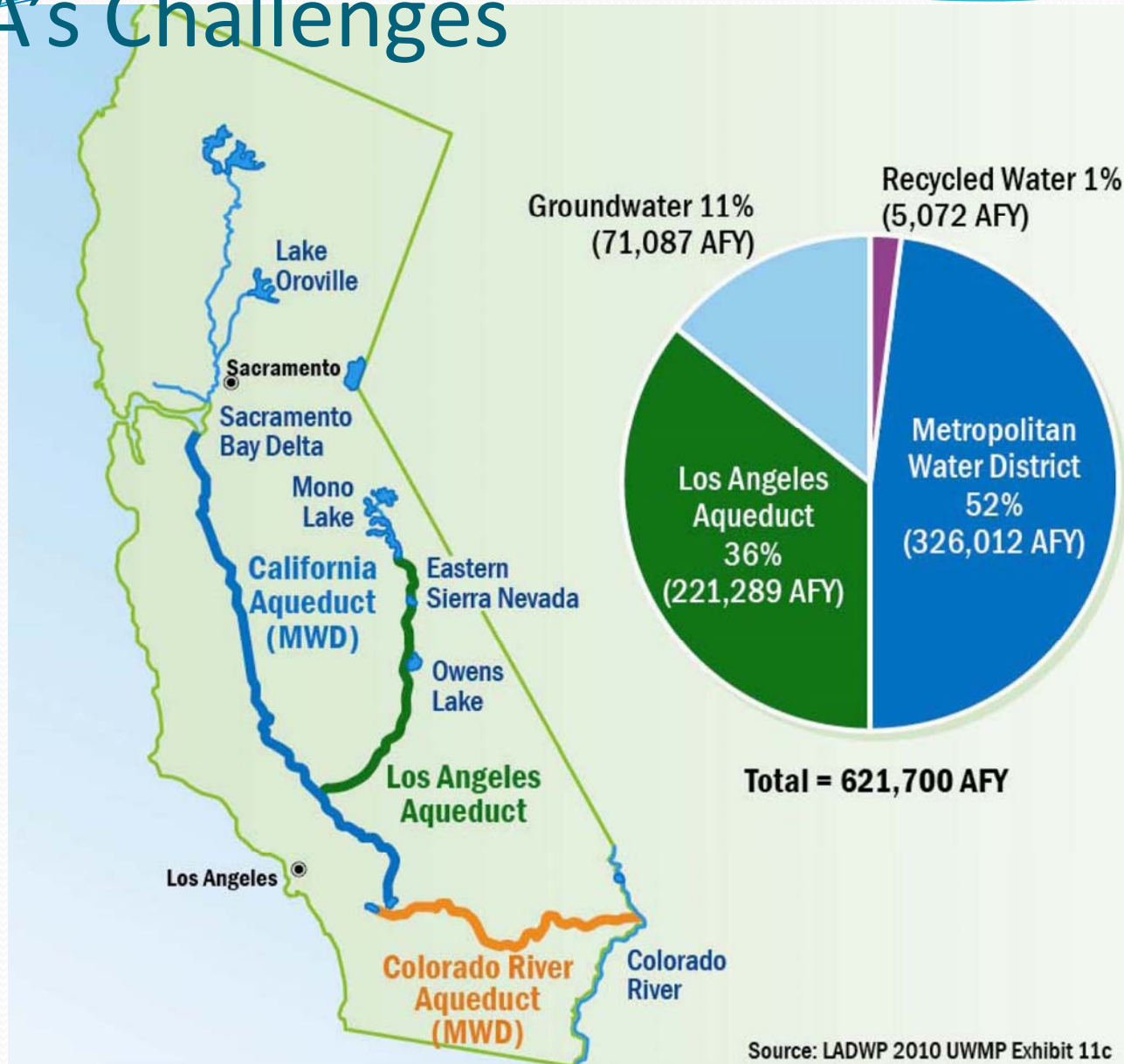
- Water Environment Research Foundation
- Water Research Foundation
- WaterReuse Foundation
- Water Quality Research Australia
- Water Research Commission, South Africa
- Suez Environment
- STOWA, Netherlands
- Veolia Environment

Urban Water Transition Framework





LA's Challenges



Source: LADWP 2010 UWMP Exhibit 11c

LA's Challenges

Stormwater



Wastewater



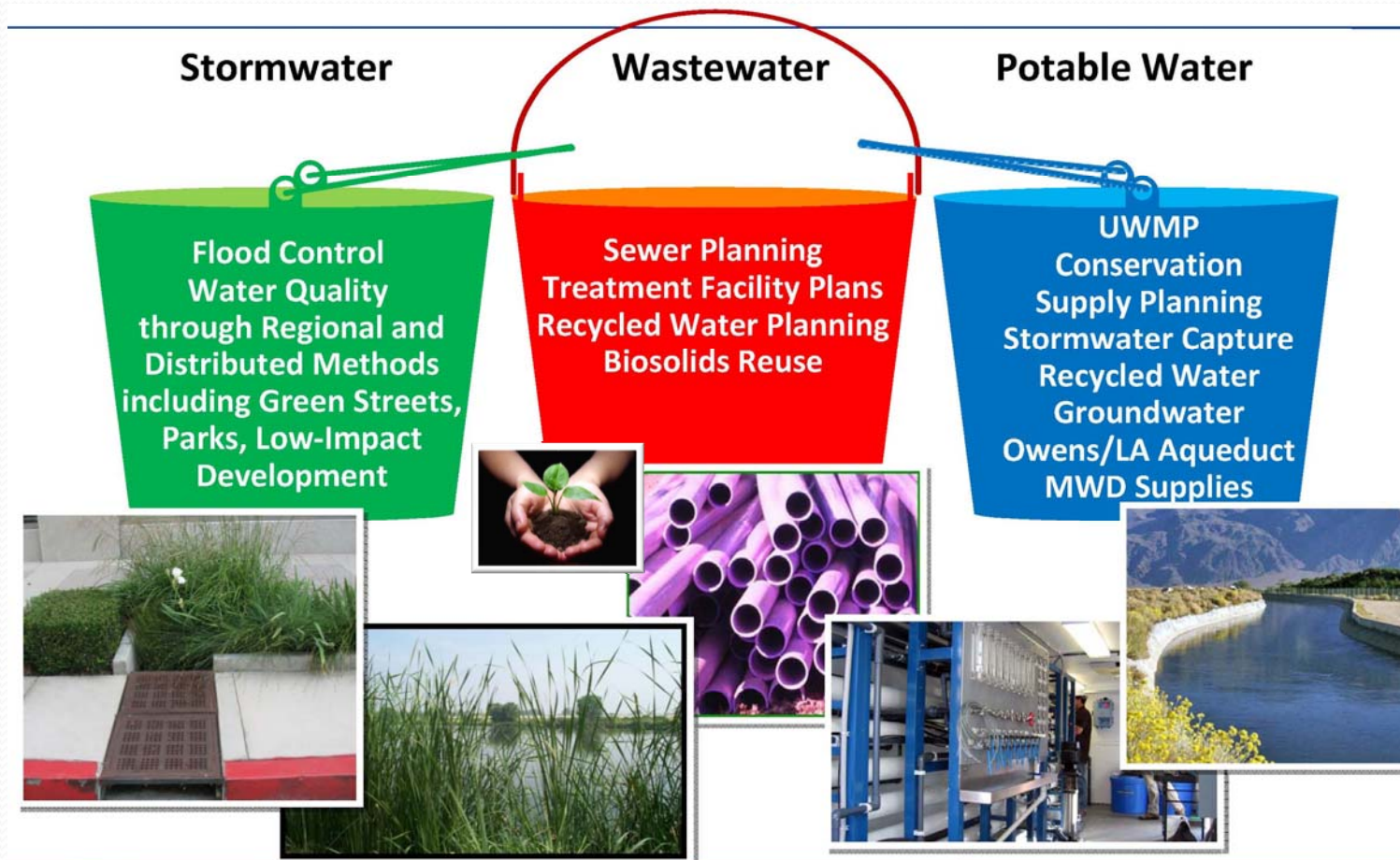
Potable Water



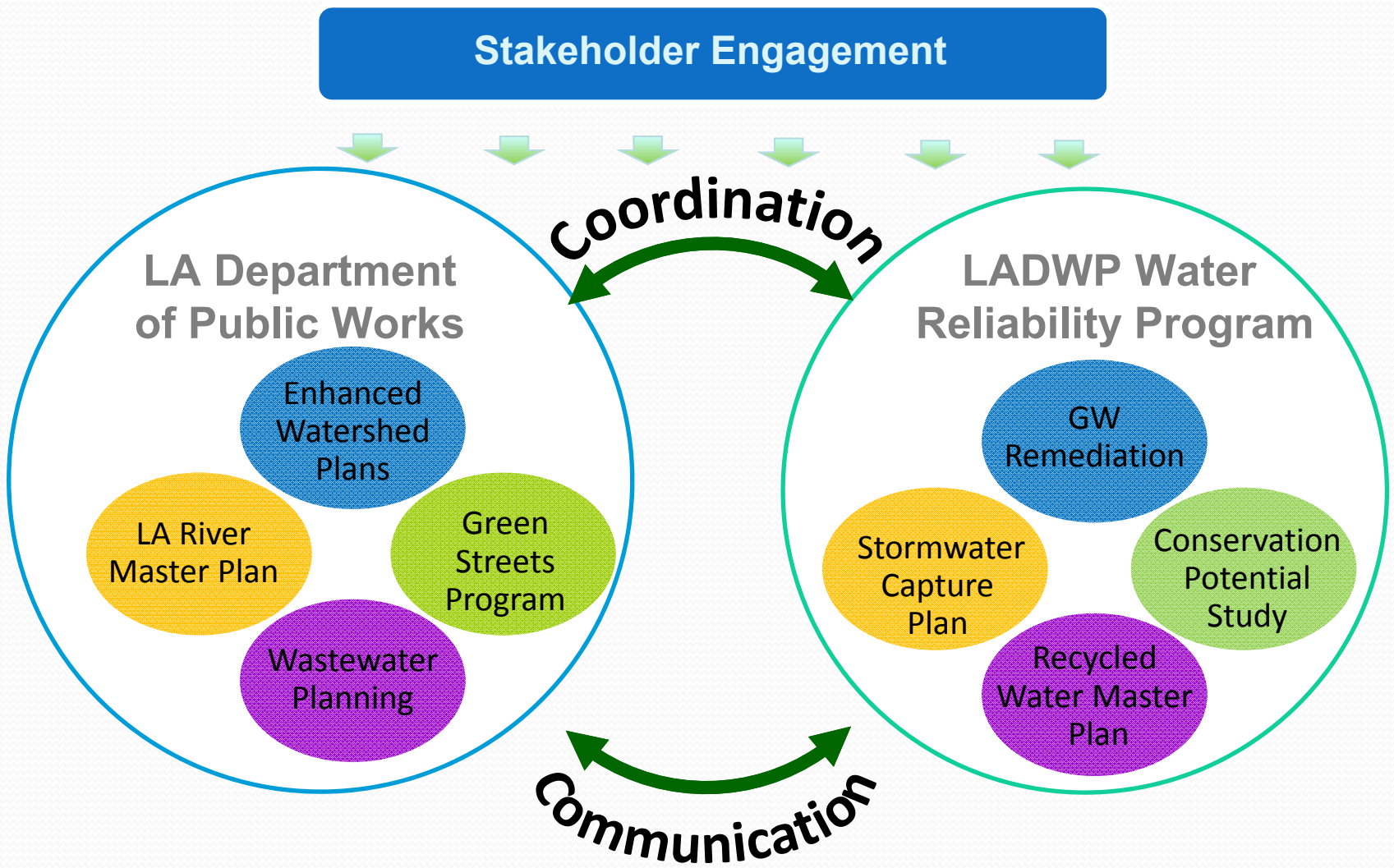
- Stormwater **runoff**
- **Flooding** caused by extreme rainfall
- Aging infrastructure
- Emerging **pollutants**
- Advanced treatment & **Recycling**
- Aging infrastructure
- Heavy reliance on **imported** water
- **Climate change** impacts
- Aging infrastructure



One Water Paradigm



One Water Los Angeles 2040



Wastewater Planning

- Integrate water supply, water conservation, water recycling, and runoff management with wastewater facilities planning
- Focus on sustainable planning with community involvement
- Policies in place that drive all immediate activities and actions inline with greener projects and innovative approach

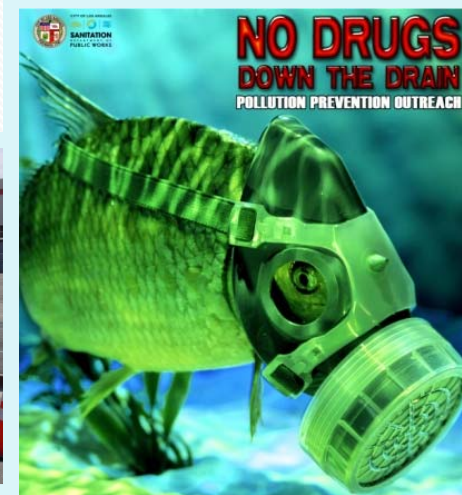
LA's Recycled Water Masterplan

- Goal: Achieve 59,000 AFY (53 MGD) of recycled water to displace imported water
- Strategy: Maximize use of recycled water via identification of potential new customers, expansion of recycled water infrastructure and groundwater replenishment project.



Source Control Strategies

- Diversion and Minimization of Pollutants
- Regulation and Control of Pollutants
- Trace Identification and Source Determination



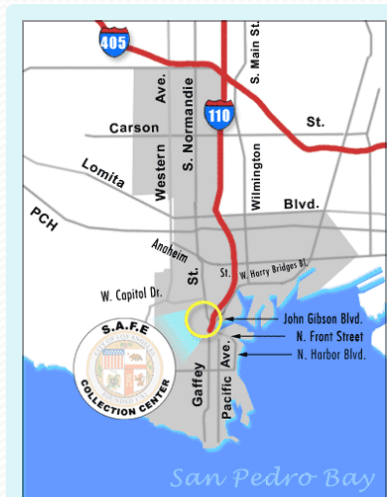
Diversion and Minimization of Industrial Pollutant in Wastestream

- Public Outreach and Industrial Source Reduction



Diversion and Minimization of Non-Industrial Pollutant

- Public Outreach and Product Ban



Assembly Bill No. 2318

Commencing January 1, 2002, any product used for the treatment of lice or scabies in human beings that contains the pesticide Lindane shall not be used or sold in the state.



Regulation and Control of Pollutants

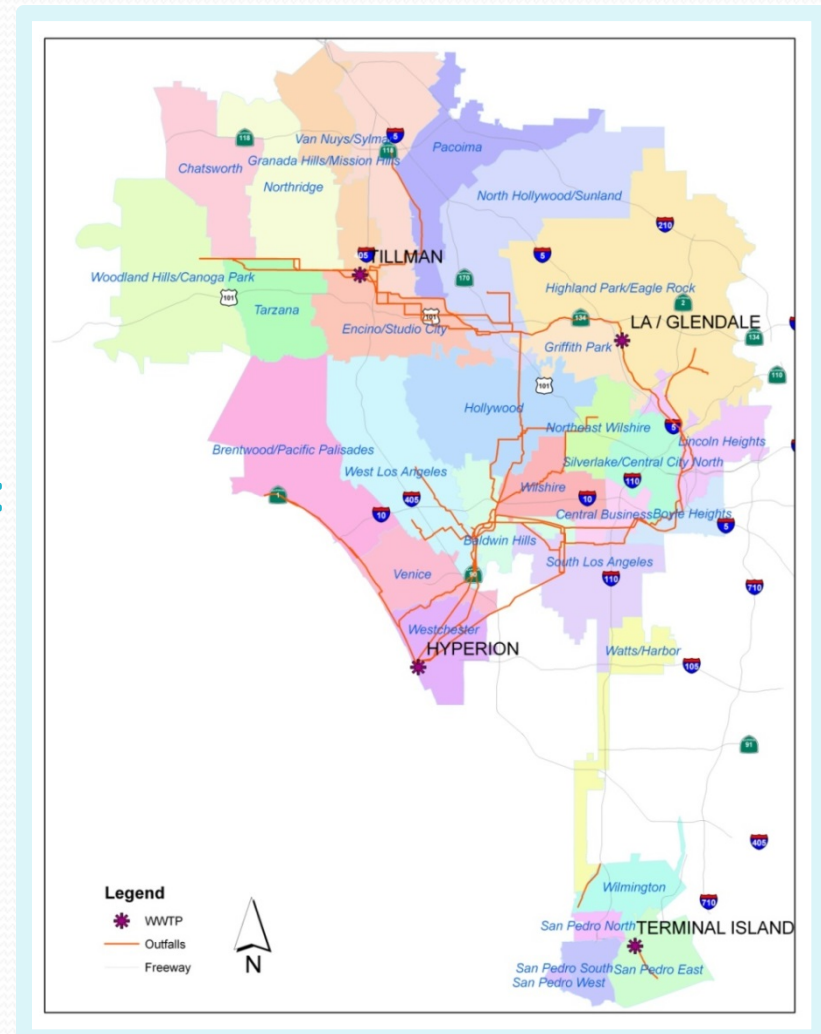
Industrial Waste Management Division



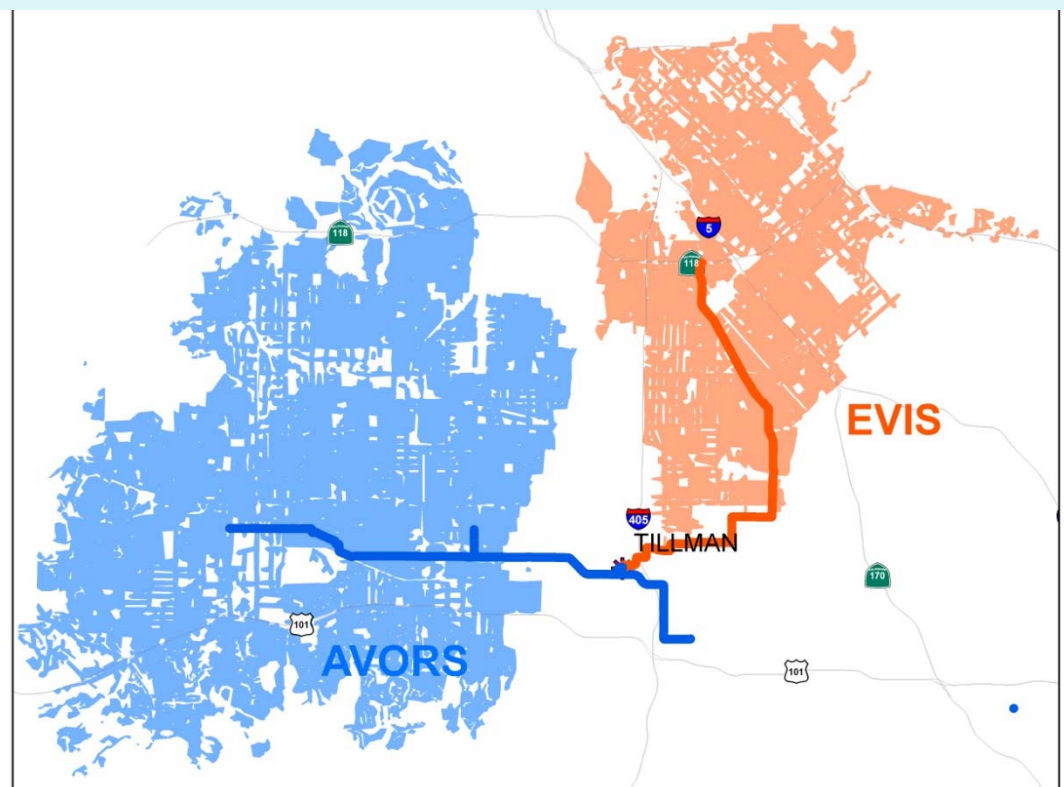
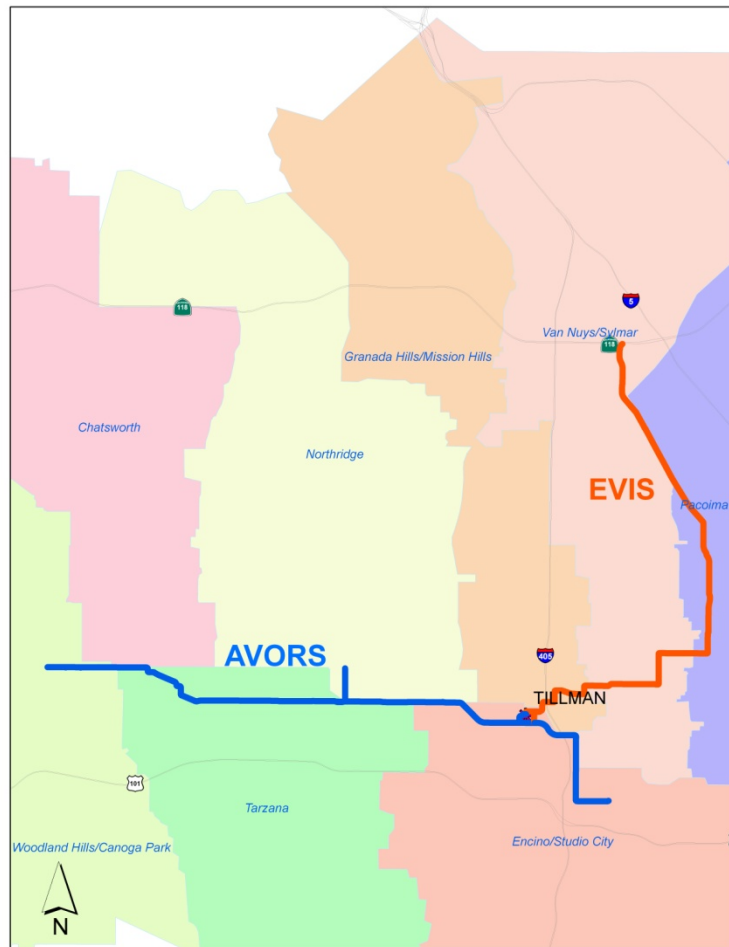
- Canvassing
- Inspection & Monitoring
- Permitting
- Enforcement
- Source Control

Trace Identification and Source Determination

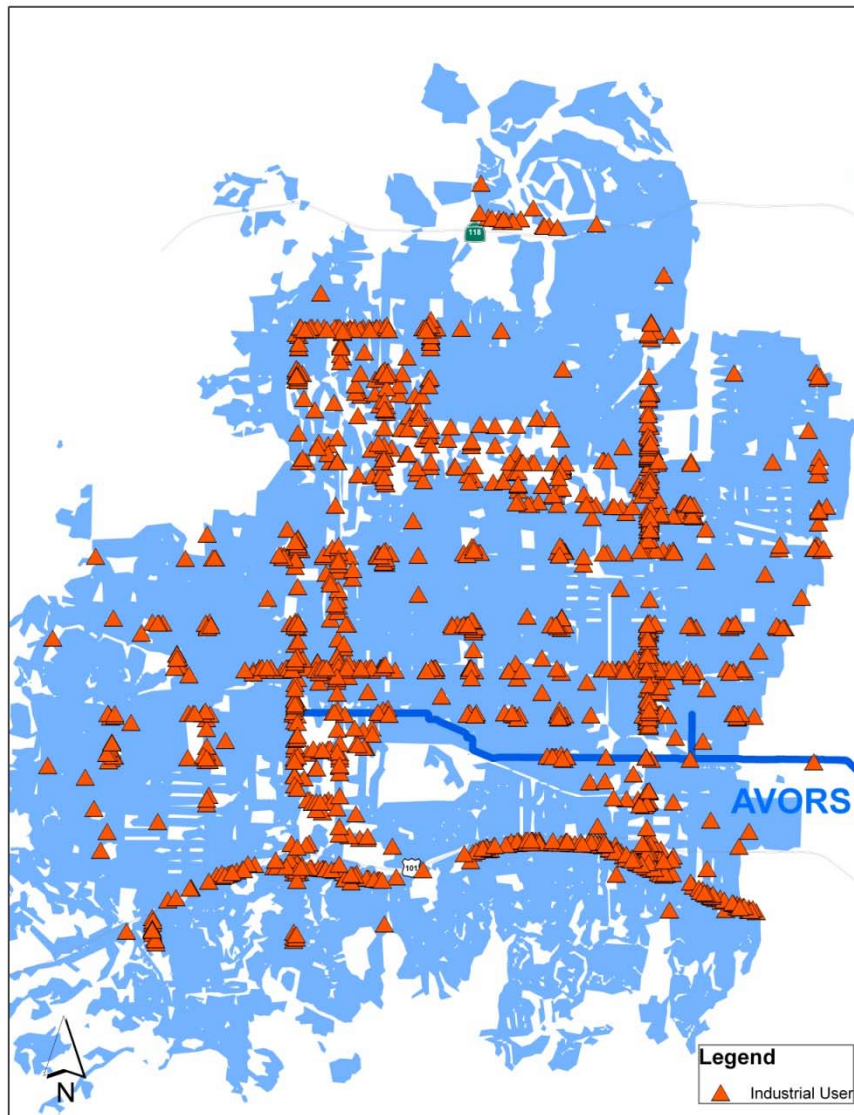
- Identify the industries
 - Literature Search
 - Inspection Report
 - Sampling
 - Active Surveillance
- Locate the IUs Contributing to:
 - Treatment Plant
 - Major Outfalls
 - Primary Basins
 - Maintenance holes



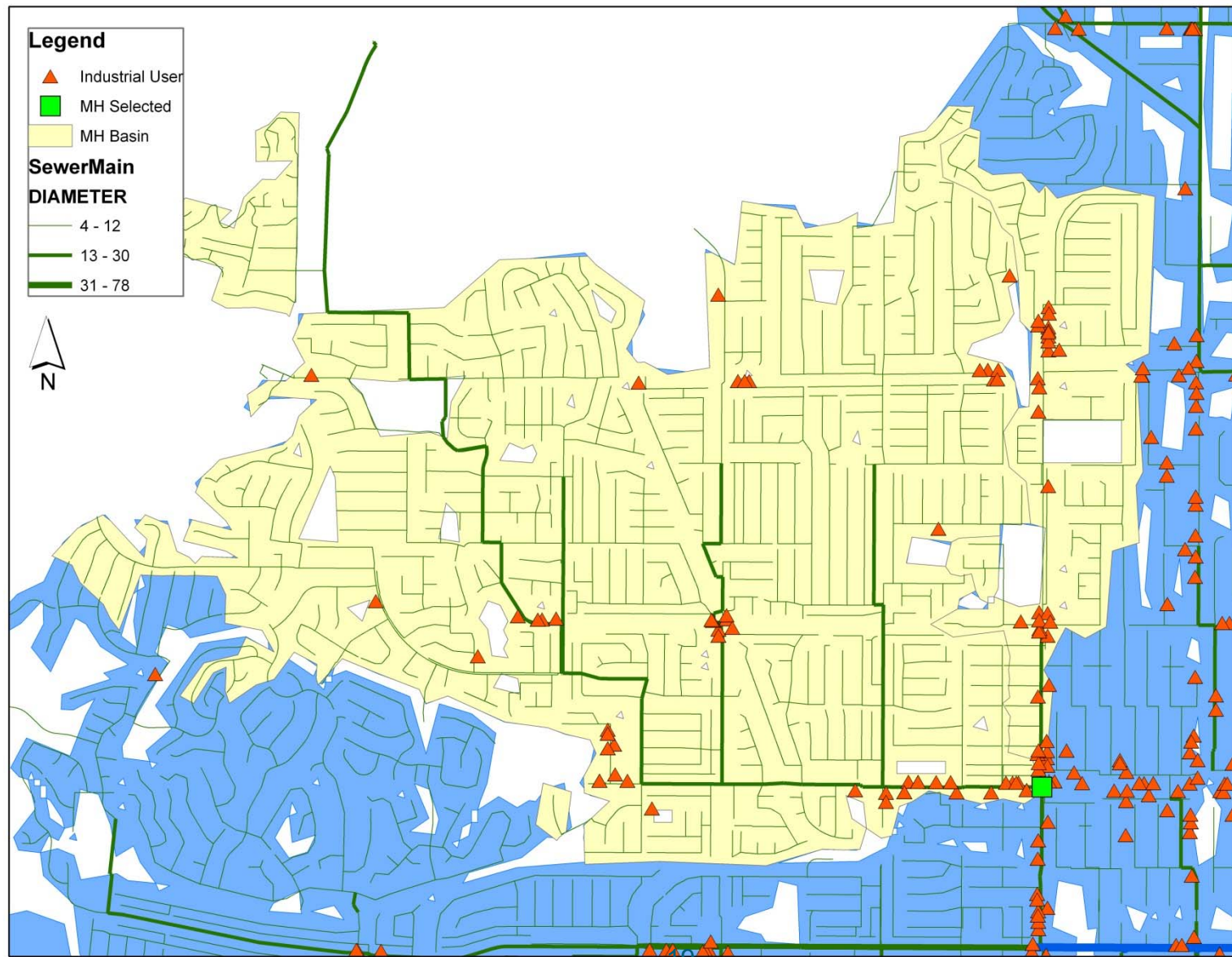
Trace Identification and Source Determination



Trace Identification and Source Determination

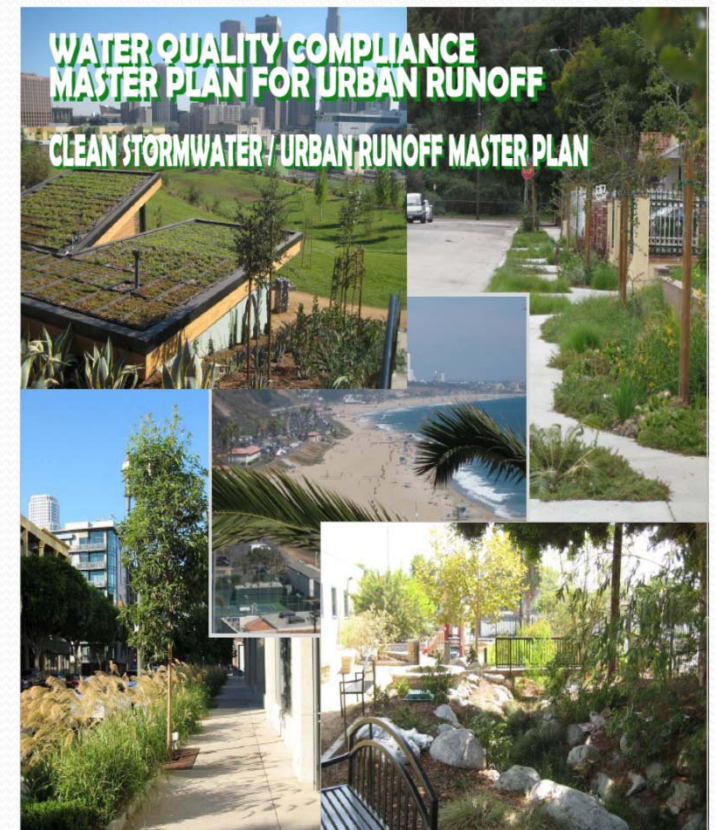
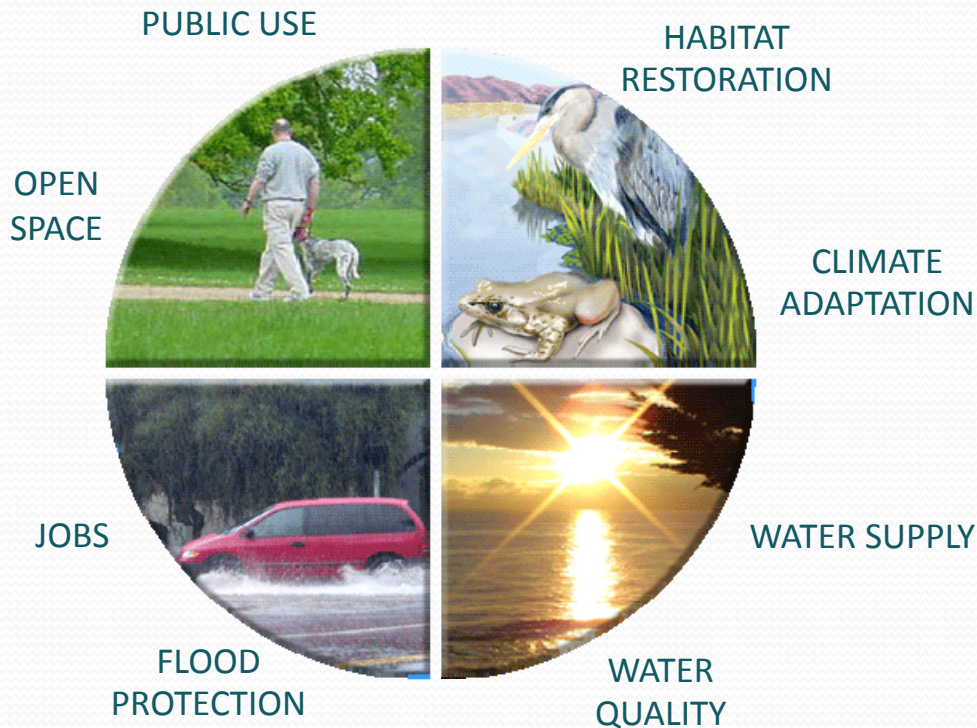


Trace Identification and Source Determination



The Multiplier Effect

- For every \$1 Million in Water Quality investments, there is up to \$22 Million in added benefits or avoided costs.



LA's Water Future

