



**Massachusetts Water Resources Authority**

## **Going with the Flow**

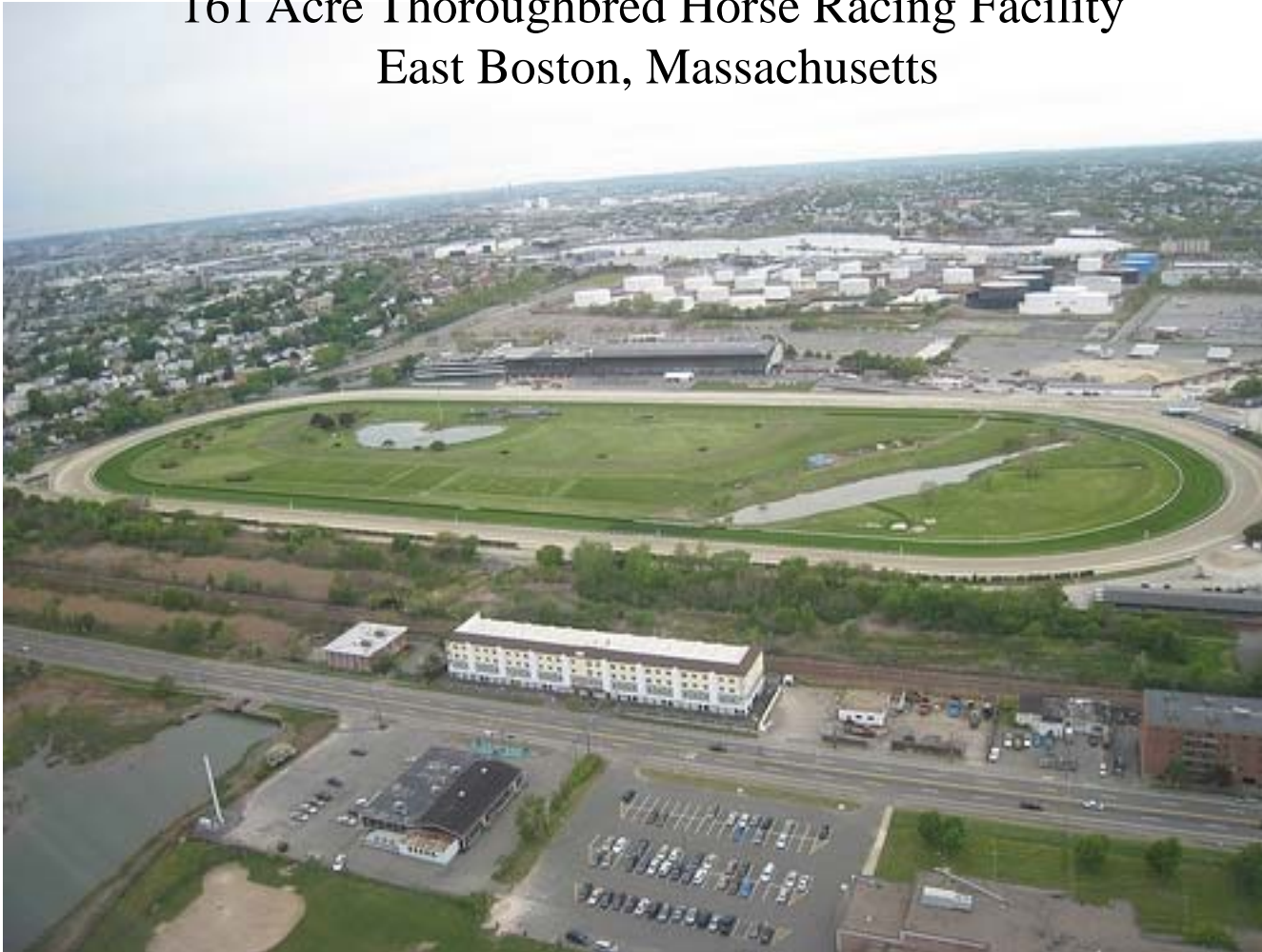
### **Pretreatment Program Accepting Stormwater**

**Carolyn Fiore**  
**Director, Toxic Reduction and Control**  
**May 17, 2013**



# Massachusetts Water Resources Authority

## 161 Acre Thoroughbred Horse Racing Facility East Boston, Massachusetts





# Massachusetts Water Resources Authority

The Facility Includes:

- 32 Stable Buildings
- Approximately 1200 Horse Stalls
- Feed and Manure Storage Areas
- Dead Animal Storage Areas
- Animal Walkways
- Associated Areas





# Massachusetts Water Resources Authority





# Massachusetts Water Resources Authority

## Regulations Imposed

EPA FED CAT 40 CFR 412

Concentrated Animal Feeding  
Operation (CAFO)

MWRA Category 1 SIU Permit

- proposed discharge flows  
(>25,000 GPD)
- reporting requirements
- pretreatment







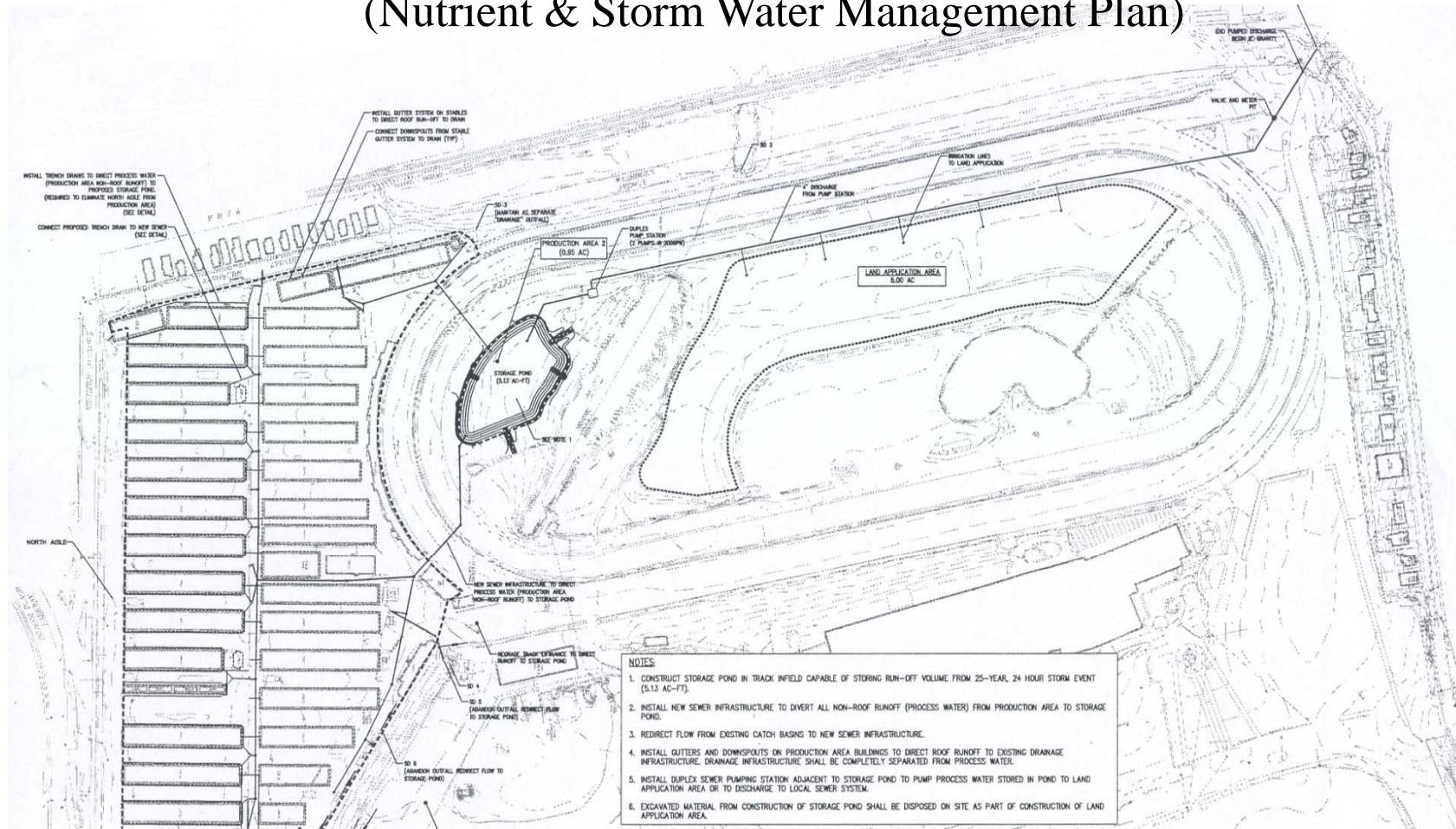
## Massachusetts Water Resources Authority

- Standard Permit Conditions
- Compliance with Nutrient and Storm Water Mgmt Plan
- Compliance with EPA's Permit and Consent Decree
- Flow Level Sensor in Downstream Sewer with auto-shut off
- Indemnification of MWRA and BWSC



# Massachusetts Water Resources Authority

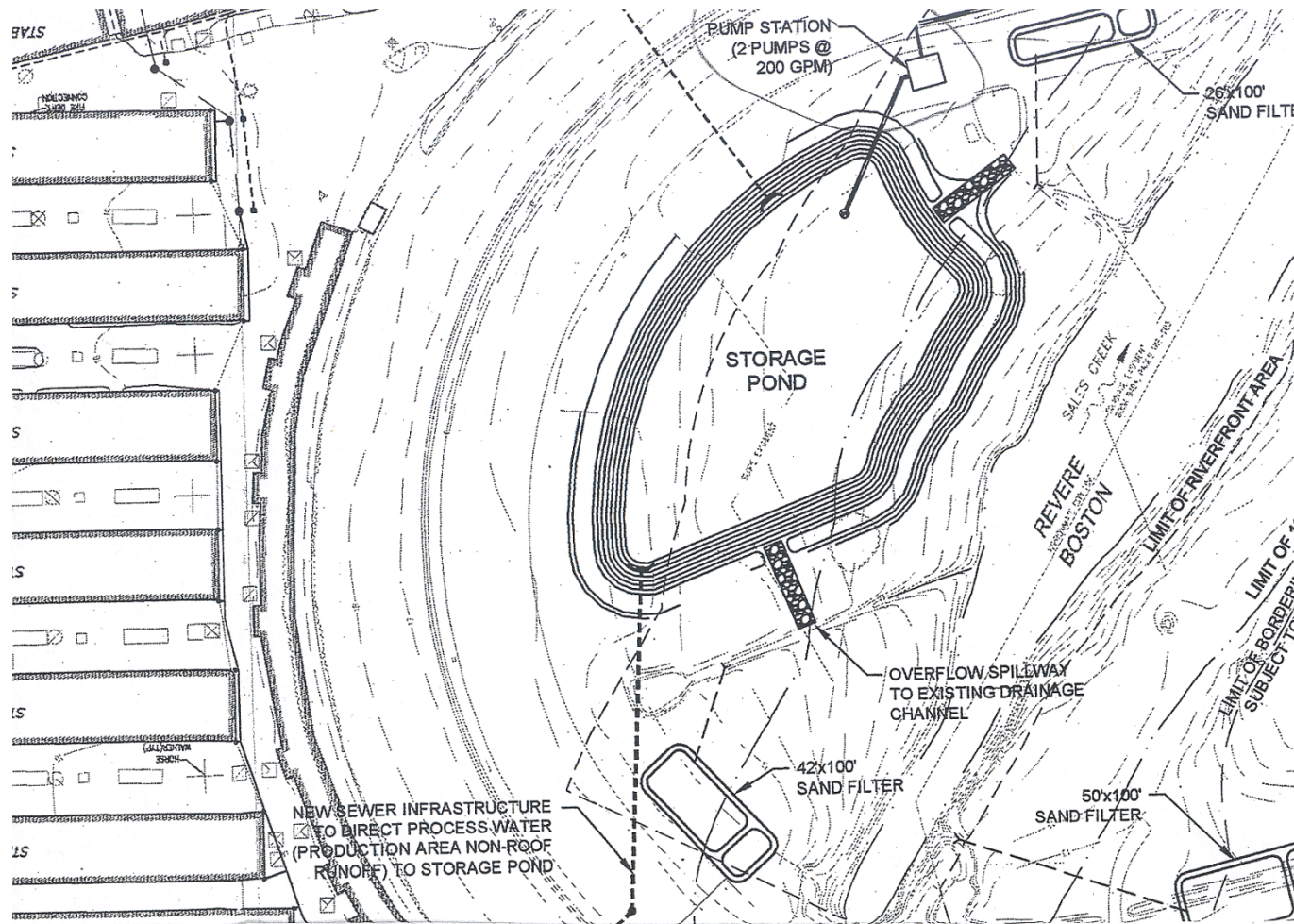
## New Process Wastewater Management System (Nutrient & Storm Water Management Plan)





# Massachusetts Water Resources Authority

## New Process Wastewater Management System (Nutrient & Storm Water Management Plan)

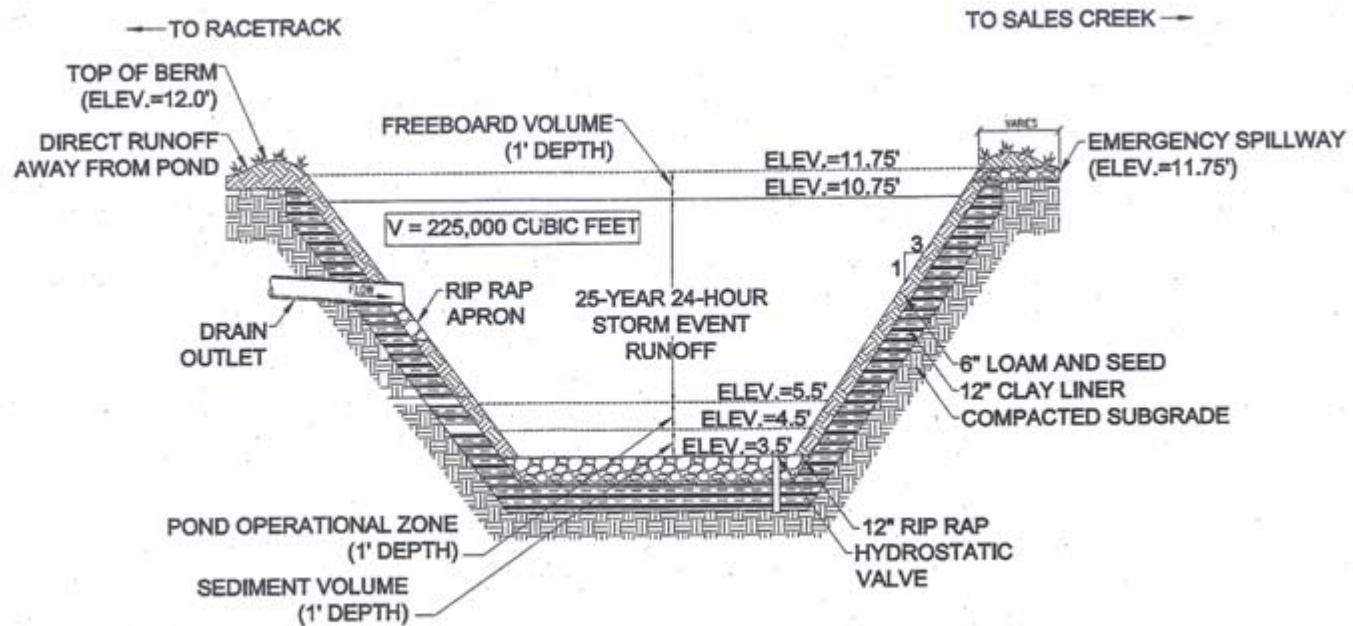






# Massachusetts Water Resources Authority

## STORAGE POND DETAIL





# Massachusetts Water Resources Authority

A WIN-WIN for EVERYONE

