



# U.S. EPA Update - Pretreatment Program

Jan Marie Pickrel  
US EPA, Office of Wastewater Management

May 9, 2012  
National Association of Clean Water Agencies  
Pensacola Beach, FL



# EPA Headquarters Activities Update

## Office of Wastewater Management - Water Permits Division

- Pretreatment Program Trainings and Guidance
- Pesticide General Permit
- Vessels General Permit
- Sufficiently Sensitive Methods Rule
- SSO Rulemaking and Peak Flows Rulemakings
- Stormwater Rulemakings
  - Municipal Separate Storm Sewer System (MS4)
  - Construction & Development

## Office of Enforcement and Compliance Assurance

- CROMERR
- NPDES Electronic Reporting Rule
- DMR Pollutant Loading Tool
- State Dashboards



# Pretreatment Training Opportunities

“Pretreatment 101” Webinar Series:

<http://www.epa.gov/npdes/training>

- Introduction to the National Pretreatment Program
  - Industrial User Waste Survey Procedures
  - POTW’s Procedures for Conducting Compliance Monitoring
  - POTW’s Procedures for Conducting Compliance Inspections
  - Overview of Pretreatment Standards
  - Pretreatment Standards: Developing Local Limits
- *FAQs for the above documents coming soon*

# Pretreatment Training Opportunities (continued)

“Pretreatment 101” Webinars *coming soon*:

- Industrial User Permitting – Basics
- Industrial User Permitting –  
Calculating Permit Limits
- Industrial User Permitting –  
Hauled and Trucked Waste





# Pretreatment Guidance Manuals

- Introduction to the National Pretreatment Program – June 2011
- Industrial User Permitting Guidance Manual – *coming soon*

*Updating 1983 manuals:*

- Procedures Manual for Reviewing a POTW Pretreatment Program Submission
- Guidance Manual for POTW Pretreatment Program Development



## More Guidance, Training & Webinars

- NPDES Permit Writers ' Training Course
  - July 09, 2012 - July 13, 2012 - Austin, Texas
  - Online course <http://www.epa.gov/npdes/training>
- Water Quality Standards Academy
  - Online course: <http://water.epa.gov/learn/training/standardsacademy/index.cfm#online>



# Pesticide General Permit

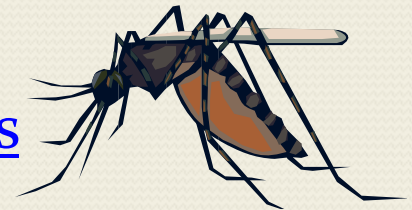
Final General Permit Issued 10/3/2011 (FR on 11/7/11)

- Applicable to:
  - 6 States – MA, NH, NM, ID, OK, AK
  - DC, U.S. Territories (except VI), many Indian lands,
  - Federal facilities in: CO, DE, VT, WA
- 3 webcasts on permit and NOI requirements

## Permit Scope:

- Mosquitoes and other Flying Insect Pest Control
- Weed and Algae Control
- Animal Pest Control
- Forest Canopy Pest Control

[www.epa.gov/npdes/pesticides](http://www.epa.gov/npdes/pesticides)



# Vessels General Permit

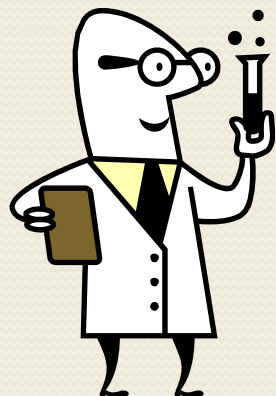
Incidental discharges from the normal operation of vessels (ballast water, bilgewater, graywater)

- *Not* military, commercial fishing or recreational vessels
- Electronic *Notification of Intent (NOI)* to register
- Current VGP expires 12/19/2013
  - Draft VGP proposed 12/8/2011
  - Comment period closed 3/5/2012
    - Over 5400 comments received
    - 68 comments received on small vessels

[www.epa.gov/npdes/vessels](http://www.epa.gov/npdes/vessels)



# Sufficiently Sensitive Methods Rule



- Draft Rulemaking Proposed June 23, 2010
- Comments collected until 08/9/2010
- Final Expected 2012

## Revisions to NPDES Regulations:

- Application Requirements: 40 CFR 122.41(e)
- Monitoring Requirements for establishing limit standard: 40 CFR 122.44(i)
- Associated Clause in Part 136

[www.epa.gov/npdes/regulations/ssmethods\\_fr\\_6-23-10.pdf](http://www.epa.gov/npdes/regulations/ssmethods_fr_6-23-10.pdf)

# SSO Rulemaking & Peak Flows

Federal Register Notice-June 1, 2010

- [www.epa.gov/npdes/regulations/frn\\_sso.pdf](http://www.epa.gov/npdes/regulations/frn_sso.pdf)

5 Listening Sessions- Summer 2010

SSO Workshop: July 14-15, 2011

- <http://www.gpo.gov/fdsys/pkg/FR-2011-06-16/pdf/2011-15003.pdf>
- Focus: How should a rulemaking address SSO control in the sanitary collection system and peak flow management at the POTW treatment plant?



# CSO Post Construction Compliance Monitoring Guidance

- EPA- 833-K-11-001
- Draft: April 2011
- [http://www.epa.gov/npdes/pubs/final\\_draft\\_cso\\_pccm\\_guidance.pdf](http://www.epa.gov/npdes/pubs/final_draft_cso_pccm_guidance.pdf)
- Comments by Sept 2011

## CSO Post Construction Compliance Monitoring Guidance

April 2011



# Stormwater Rulemaking

## Rulemaking considerations:

- Establish performance standard for discharges from newly developed and redeveloped sites of a specific size
- Extend the protection of the MS4 program
- Require larger regulated MS4s to reduce stormwater discharges in areas of existing development through retrofits
- Consider specific requirements for the Chesapeake Bay watershed

Date for Proposed & Final Rule – to be determined soon

[www.epa.gov/npdes/stormwater/rulemaking.cfm](http://www.epa.gov/npdes/stormwater/rulemaking.cfm)



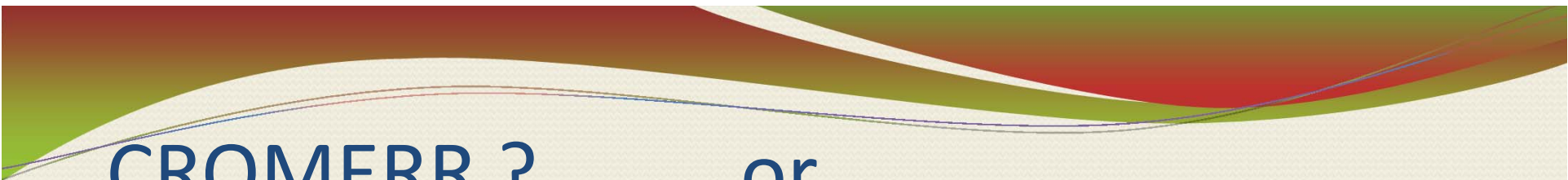
# Regulation of Stormwater from Construction & Development Sites

C&D Rule provisions must be incorporated into any new or reissued State or EPA Construction General Permit (CGP)

<http://www.epa.gov/npdes/cgp>

- EPA issued Final CGP on 2/16/2012
- Webinars on 3/15 and 3/21/2012

Contacts: Greg Schaner, Erika Farris



CROMERR ? ... or...

## NPDES Electronic Reporting Rule?

### CRoss-Media Electronic Reporting Regulations

- 40 CFR Part 3
- Performance-based, technology-neutral standards for systems to receive electronic reports from facilities they regulate under EPA Programs
- <http://www.epa.gov/cromerr/index.html>
  - Includes:
    - CROMERR 101 on-line course
    - Net-DMR



# Key Goals of the To-Be-Proposed NPDES Electronic Reporting Rule

Concept Originated from Clean Water Act Action Plan – Oct 15, 2009

- Reduce duplicative data management by regulated facilities and states
- Transparency to the public
- Improve access to timely, accurate, complete, and nationally consistent data
- Require certain reports to be submitted electronically, but no new reporting requirements

See also:

- NPDES  Exchange network:  
<http://www.regulations.gov/exchange/topic/npdes>

# Potential POTW Electronic Reports

- Discharge Monitoring Reports (DMRs)
- Biosolids Annual Program Reports
- **Pretreatment Program Annual Reports**
- Sewer Overflow and Bypass Event Reports (CSOs, SSOs, Bypass Events)
- When EPA or State is Control Authority –  
**Industrial User Compliance Reports in  
Municipalities Without Approved Pretreatment  
Programs**



# Next Steps – Rule Schedule

- The proposed rule is currently under review at the White House's Office of Management and Budget (OMB)
- Propose rule in the Federal Register
- Public Comment period
- Promulgate Final rule -- projected date late 2012 /early 2013 (includes modernization of EPA's national NPDES data system by the end of CY2012)

# Next Steps – Implementation Phases

- Phase 1 Data (January 2014?)
  - Basic facility and permit information, inspections, violation determinations, and enforcement actions data from states;
  - DMR information from facilities;
  - Notices of intent to discharge (NOIs), notices of termination (NOT), no exposure certification (NEC), and low erosivity waiver (LEW)] for Federally-issued general permits; and
  - NOIs from facilities covered under CAFO general permits.
- Phase 2 Data (January 2015?)
  - Program reports from all facilities
  - General permit covered facilities



# DMR Pollutant Loading Tool

- Similar to Toxics Release Inventory (TRI) – this new web tool is for CWA point source discharge monitoring data.
  - Who is discharging What and Where
- Calculates pollutant loads (pounds) from discharge monitoring data:

$$\begin{array}{ccccc} \text{Pollutant Discharge} & & & & \\ \text{Concentration} & & \text{Flow} & & 8.34 \\ (\text{mg/l}) & \times & (\text{MGD}) & \times & (\text{Conversion Factor}) \end{array}$$

- Significant implications for:
  - Enforcement targeting and compliance assistance (providing better sense of the importance of effluent discharges and permit limit violations)
  - Public access
  - Effective and timely communication on characterizing point source dischargers
  - Better data for watershed modeling and pollution budgets (TMDLs), developing effluent limits, enhancing EPA Regional and State NPDES program quality, and EPA rulemakings (effluent guidelines)

<http://cfpub.epa.gov/dmr/>

# DMR Pollutant Loading Tool (continued)

- Goal: To provide greater transparency and utility of DMR data in PCS and ICIS-NPDES.
- Data available for 23,720 facilities with discharge monitoring data.
- 2 main audiences for this on-line version of the tool:
  - General Public (Concerned Citizens, Researchers)
  - Technical Users (NPDES Permit Writers, Watershed Modelers, Regulatory Agencies, Researchers, Enforcement Targeting)
- EPA solicited public comments on the new web tool and received over thirty comments from a range of stakeholders
  - Most comments were positive with many providing input on potential improvements.
  - Publicly released on December 2, 2010 (EPA's 40<sup>th</sup> Anniversary)
- Current schedule is to incorporate as many of these comments into the tool as budget and schedule permits this FY.



# DMR Pollutant Loading Tool (continued)

[http://cfpub.epa.gov/dmr/ez\\_search.cfm](http://cfpub.epa.gov/dmr/ez_search.cfm)

## EZ Search

**Instructions.** Change the criteria in any of the boxes below and click the Search button to retrieve DMR pollutant loadings information.

Select Reporting Year: 2007

### 1 Location or Watershed

☒ **Nationwide**

---

☐ **Search by Location**

Zip Code

EPA Region:

OR

State

City

County

---

☐ **Search by Watershed**

Zip Code

12-Digit HUC

[Find 12-digit HUC on a map](#)

Major U.S. Watersheds:

### 2 Pollutant

☒ **All Pollutants**

---

☐ **Specify Pollutant**

Pollutant Name (or partial name)

Chemical Abstract Service Number (CAS)  
(without dashes)

---

☐ **Pollutant Categories**

- ☐ Metals
- ☐ Nitrogen
- ☐ Organic Enrichment
- ☐ Pathogen Indicators
- ☐ Phosphorus
- ☐ Priority Pollutants
- ☐ Solids
- ☐ Temperature

### 3 Industry

☒ **All Point Sources**

---

☐ **Publicly Owned Treatment Works (POTWs) Only**

---

☐ **Industrial Point Sources**

Point Source Category:

2-Digit SIC Code:

OR

Enter a 4-digit SIC Code:

[SIC Code lookup](#)

#### Industrial Category Rankings

[View EPA's current industrial category rankings](#)

If you would like more detailed information, try the [Advanced Search](#) >



# ECHO State Dashboard

Enforcement & Compliance History One

Dashboard:

Interactive mapping tool that presents information about:

- CWA Permit

- Compliance Monitoring

- Violations

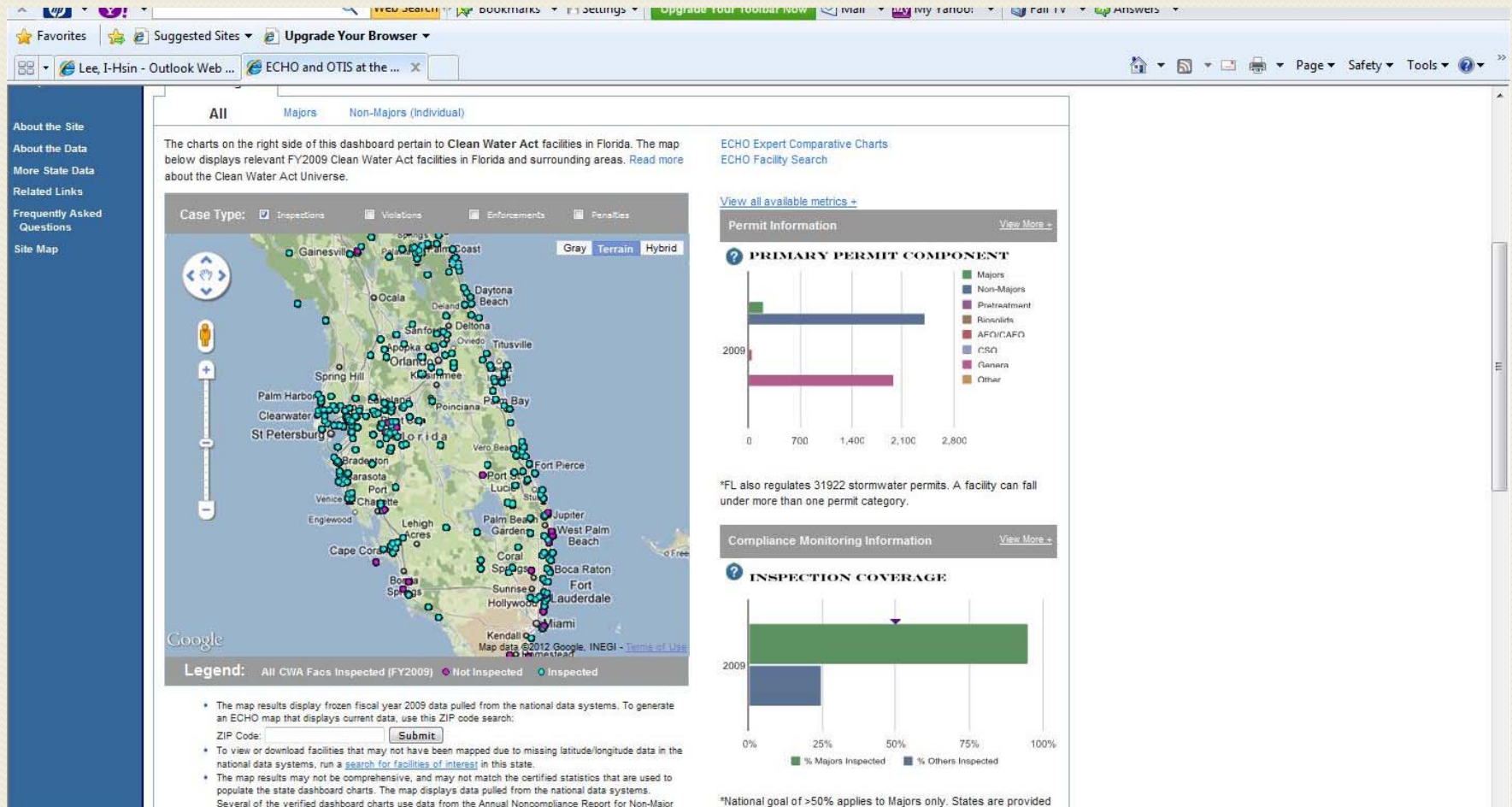
- Enforcement Actions

- Penalty information



# ECHO State Dashboard

[http://www.epa-echo.gov/echo/dashboard/state\\_dashboards.html](http://www.epa-echo.gov/echo/dashboard/state_dashboards.html)



# Program or Project Contacts

Name	Topic Area	Phone	E-mail
Bill Swietlik	Effluent Guidelines Planning	(202) 566 1129	<a href="mailto:swietlik.william@epa.gov">swietlik.william@epa.gov</a>
Damon Highsmith	Dental Amalgam Pretreatment Standards	(202) 566 2504	<a href="mailto:highsmith.damon@epa.gov">highsmith.damon@epa.gov</a>
Meghan Hessenauer Samantha Lewis	Unused Pharmaceutical Guidance Document	(202) 566 1040 (202) 566 1058	<a href="mailto:hessenauer.meghan@epa.gov">hessenauer.meghan@epa.gov</a> <a href="mailto:lewis.samantha@epa.gov">lewis.samantha@epa.gov</a>
Eric Strassler	Effluent Guidelines Website	(202) 566 1026	<a href="mailto:strassler.eric@epa.gov">strassler.eric@epa.gov</a>
Carey Johnston	DMR Pollutant Loading Tool	(202) 566 1014	<a href="mailto:johnston.carey@epa.gov">johnston.carey@epa.gov</a>
Robin Danesi	Vessel General Permit	(202) 564 1846	<a href="mailto:Danesi.robin@epa.gov">Danesi.robin@epa.gov</a>
Greg Schaner	Stormwater	(202) 564 0721	<a href="mailto:Schaner.greg@epa.gov">Schaner.greg@epa.gov</a>
Chris Kloss	Stormwater / Green Infrastructure	(202) 566 1438	<a href="mailto:Kloss.christopher@epa.gov">Kloss.christopher@epa.gov</a>
Jamie Hurley	Water Transfers	(202) 564 1709	<a href="mailto:Hurley.jamie@epa.gov">Hurley.jamie@epa.gov</a>
Rick Stevens Jim Carleton	Sewage Sludge Study Sewage Sludge Risk Assessment	(202) 566 1135	<a href="mailto:Stevens.rick@epa.gov">Stevens.rick@epa.gov</a> <a href="mailto:Carleton.jim@epa.gov">Carleton.jim@epa.gov</a>
Jan Pickrel	Pretreatment	(202) 564 7904	<a href="mailto:Pickrel.jan@epa.gov">Pickrel.jan@epa.gov</a>
Andy Hudock	CWA Enforcement Action Plan Electronic Reporting Rule	(202) 564 6032 (202) 566 1014	<a href="mailto:Hudock.andrew@epa.gov">Hudock.andrew@epa.gov</a> <a href="mailto:Johnston.carey@epa.gov">Johnston.carey@epa.gov</a>



Poison Ivy



Poison Ivy



Poison Ivy



Poison Ivy



Jan Pickrel

[Pickrel.jan@epa.gov](mailto:Pickrel.jan@epa.gov)

(202) 564-7904

Blackberry

