



Los Angeles ...

Leading the way to clean, green and sustainable City through integration, innovation and collaboration

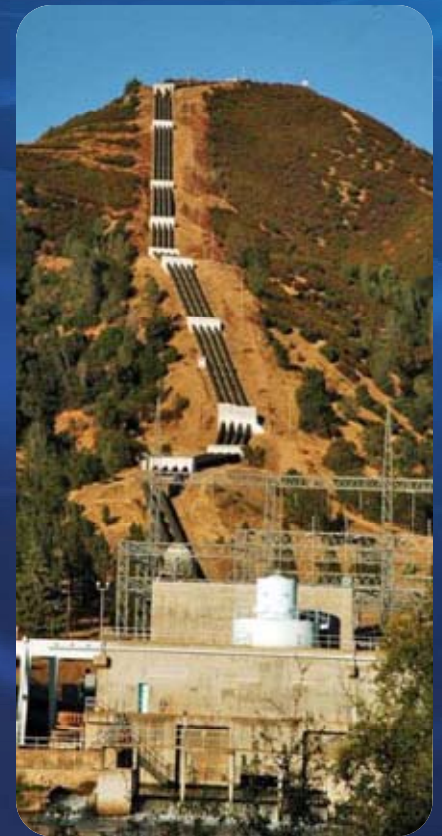
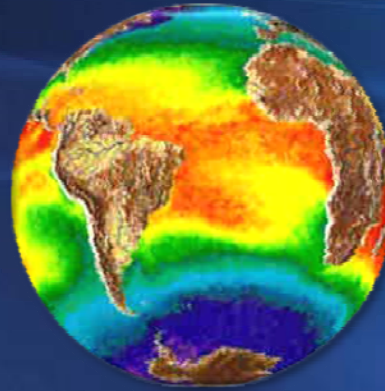


It takes a village...

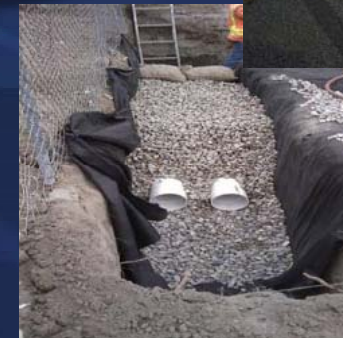
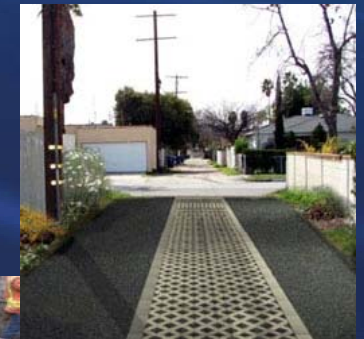
- Los Angeles City Departments
 - Sanitation, Engineering, Water & Power
 - Planning, Recreation and Parks, etc
- Partner Agencies
 - US Army Corps of Engineers, State Transportation Department, Los Angeles County, Neighboring Cities
 - State Water Resources and Regional Boards
- Partner Community Groups
 - Heal the Bay, TreePeople, Council for Watershed Health
 - Neighborhood Councils, Community Associations, etc
- Industry Manufacturers, Consultants and Contractors

Our Challenges

- Climate Change
- Pollution
- Growth
- Aging infrastructure
- Limited water supplies
- Regulations
- Lack of funding

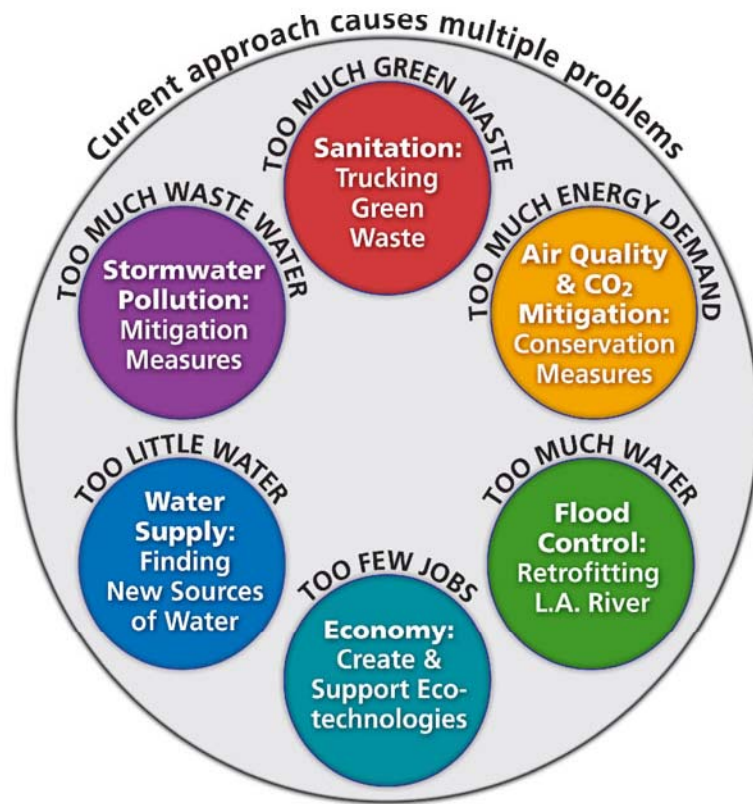


Water Integrated Resources Plan (IRP)



Shifting to Integrated Management

LOS ANGELES TODAY



Dis-integrated approach wastes resources, duplicates efforts and imposes unsustainable practices.

LOS ANGELES POTENTIAL



Integrated approach also creates jobs and liberates funds for emerging green technologies.

The background is a deep blue gradient with several thin, wavy, light blue lines that create a sense of motion and depth. The lines are curved and intersect, giving the impression of a fluid, undulating surface.

Video

South Los Angeles Wetland Park

- 9-acre Metropolitan Transportation Authority (MTA) property transformed into wetland and riparian habitat
- 525-acre watershed area diverted and treated in a 4-acre stormwater treatment wetland
- Multi-beneficial use
 - Educational opportunities
 - Wildlife viewing
 - Historical railway elements
 - Community multi-use center
 - Historical building reutilization



Before



South LA Wetlands Park

South Los Angeles Wetland Park



Westside Park Rainwater Irrigation Project: *Before*



Westside Park Rainwater Irrigation Project: *After*



Sun Valley

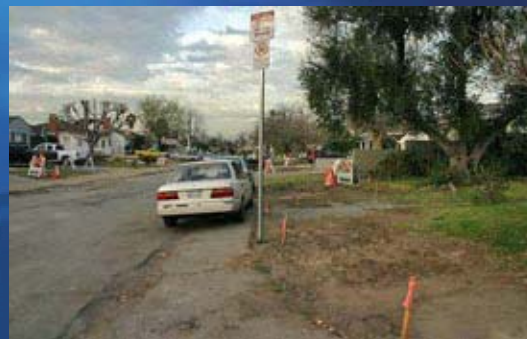


- Chronic flooding
- Lack of storm drain system
- Appropriate soils for infiltration
- Adopted watershed plan
- Political and agency support
- Community Need

Elmer Avenue Green Street Project

- Installation of:
 - Rain barrels
 - Rain garden bioswales
 - Porous pavements
 - Infiltration galleries under the street
- Fully infiltrates 40-acre drainage area of a 2-yr storm event
- 16 ac-ft groundwater recharge annually

Before



After



The background is a deep blue gradient with several thin, wavy, light blue lines that create a sense of motion and depth. The lines are curved and intersect, giving the impression of flowing water or abstract energy.

Video

Questions / Comments

Additional Information: www.lacity.org
www.lastormwater.org



Follow us on Facebook: www.facebook.com/lastormwaterprogram



“To Protect the Beneficial Uses of Receiving Waters, while
Complying with All Pollution Abatement Regulations”

