

Charleston Water System

Clean Water Services in the Holy City



Andy Fairey, Chief Operating Officer
Charleston Water System
faireyaw@charlestoncpw.com
www.charlestonwater.com



Our Mission

...is to protect **public health** and the **environment** of our service community by providing **clean water services** of **exceptional quality and value**.



About Us...



- 107,000 water accounts
- Wholesale service to 9 area utilities
- 1 treatment plant



- 48,000 sewer accounts
- Wholesale treatment service to 5 area utilities
- 1 treatment plants



Awards & Certifications...



**South Carolina Quality Forum;
2011 Governor's Quality Award**

**S.C.
Department
of Commerce
2010 Recycler
of the Year**



Our Source Water...



1. Bushy Park Reservoir

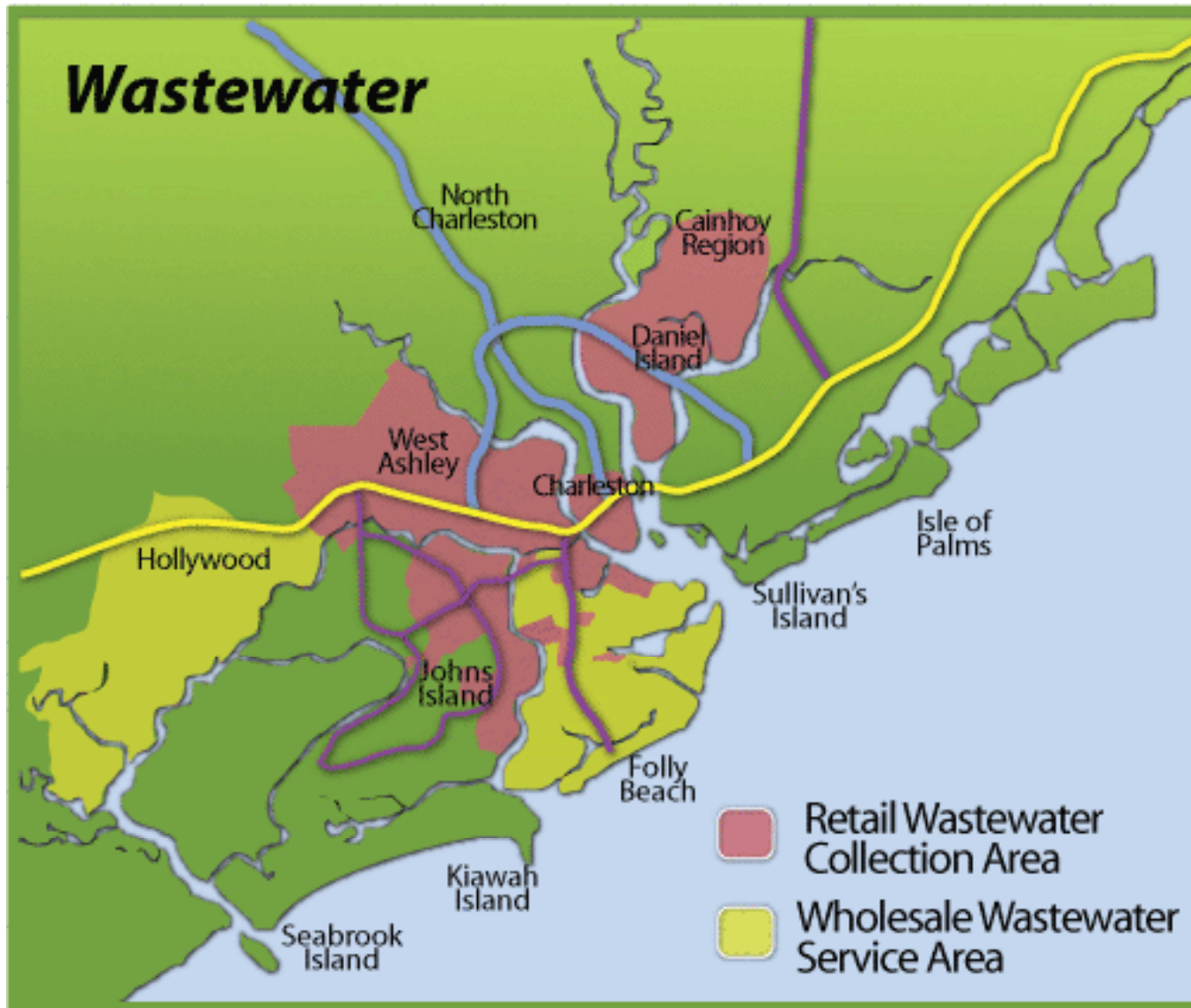
2. Edisto River



Drinking Water



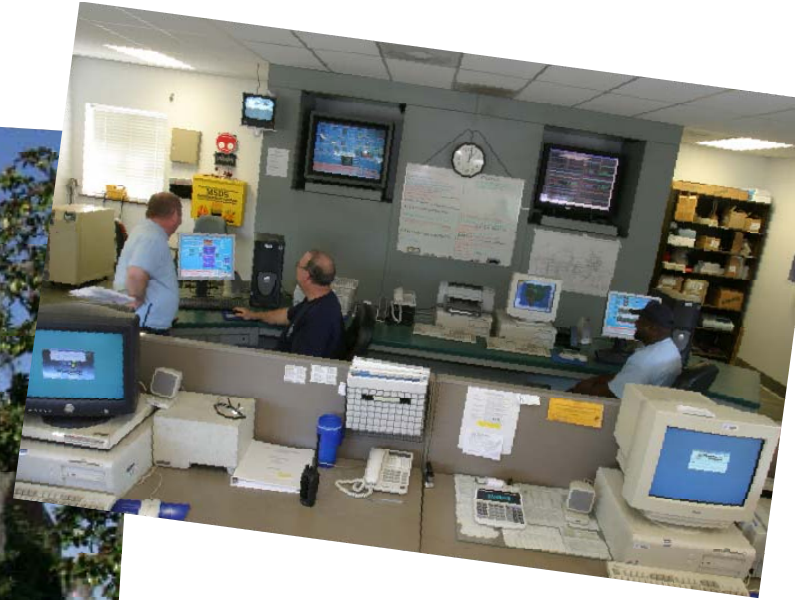
Wastewater



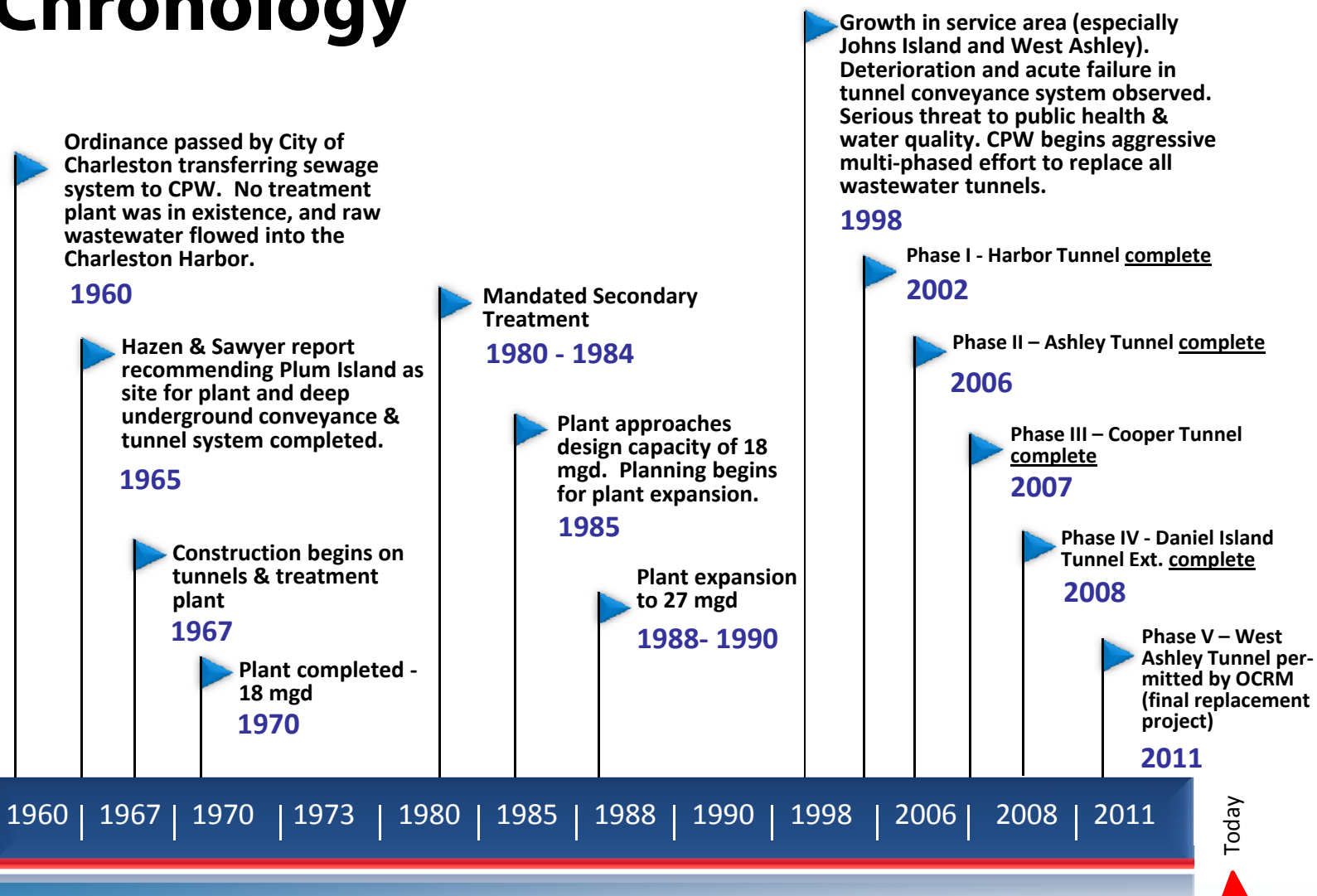


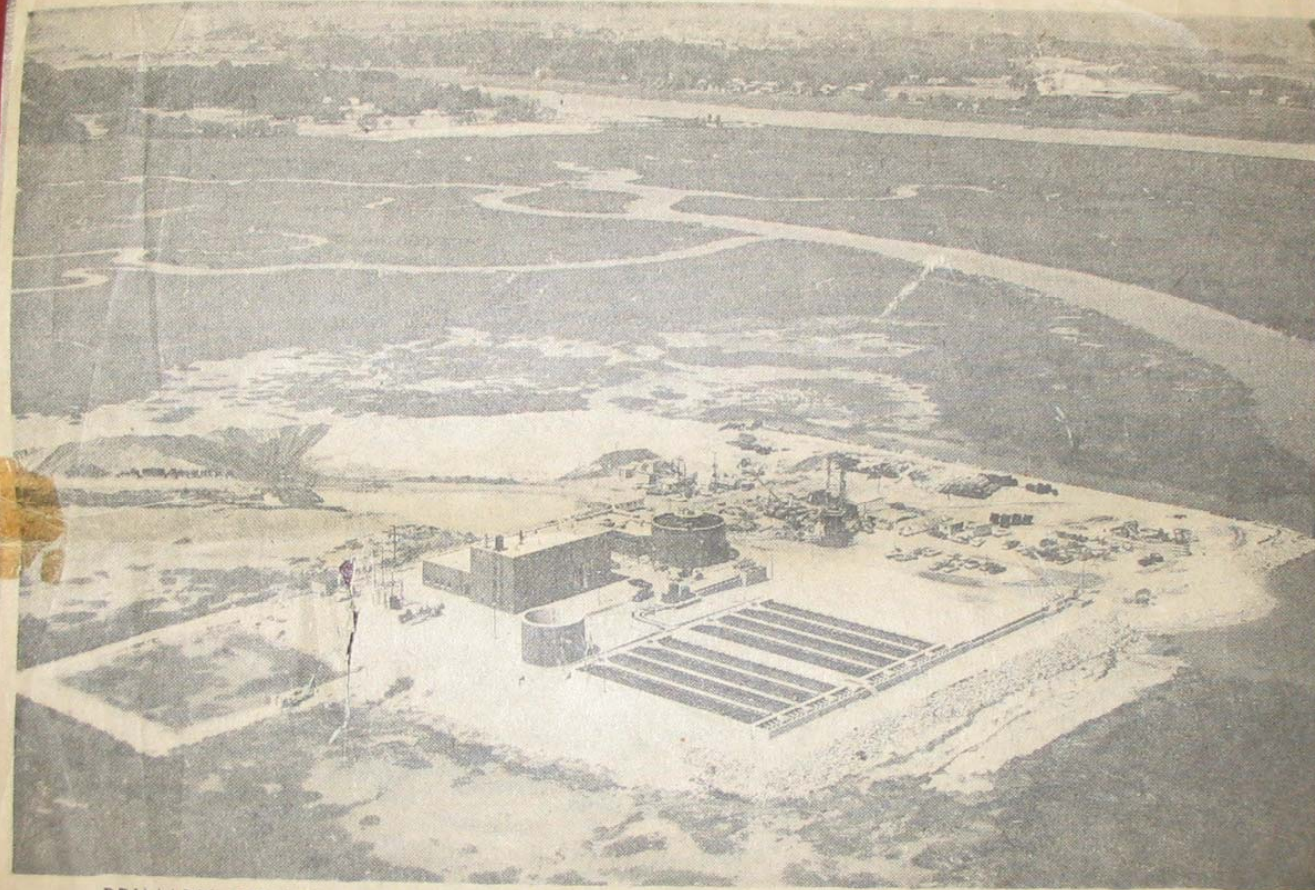
Hanahan Water Treatment Plant





Wastewater System Chronology





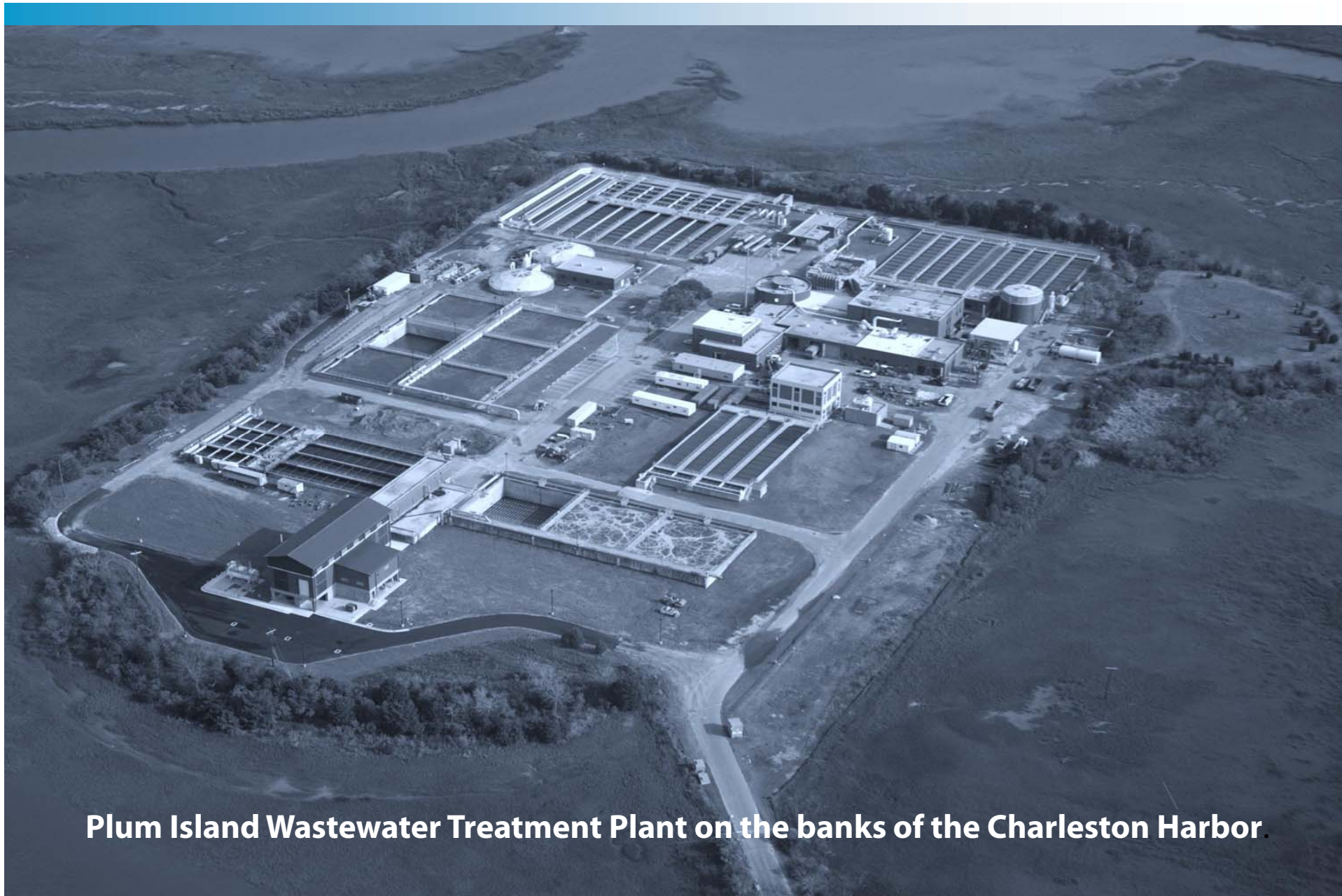
PRIMARY SEWAGE TREATMENT PLANT TAKING SHAPE IN ASHLEY RIVER MARSH

The city of Charleston's primary sewage treatment plant on Plum Island is scheduled to start operating in mid-June, according to Water Works director John R. Bettis. Raw sewage from throughout the city will be piped to the island where a pumping station, the larger of two circular structures, will pump the sewage to the long, rectangular settling and treatment basins. There the solids will be chemically treated and will settle to the bottom of the basins. The smaller circular structure is a holding tank for solids.

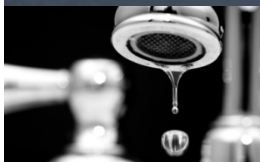
The large building between the pumping station and holding tank houses vacuum filters and an incinerator where the solid waste will be burned. The pumping station, which extends about 125 feet below the ground, will not be receiving sewage from the east side of the peninsula until about year end, Bettis said. This aerial photograph was taken from southeast of the plant with the Wapoo Creek and West Ashley suburbia in the distance. (Staff photo by Jordan)

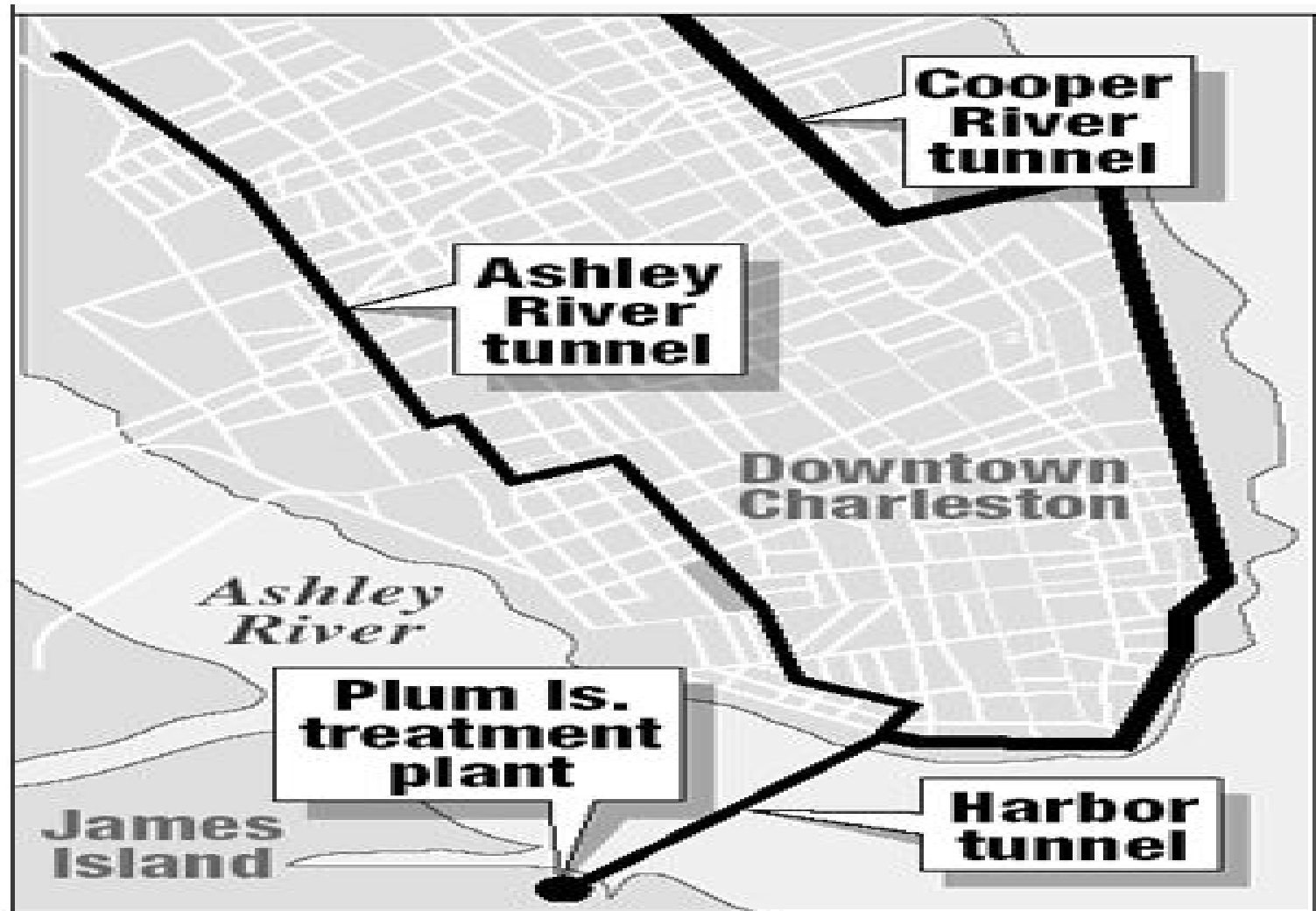
News & Courier
article
announcing the
opening of the
Plum Island
Wastewater
Treatment Plant,
1971.





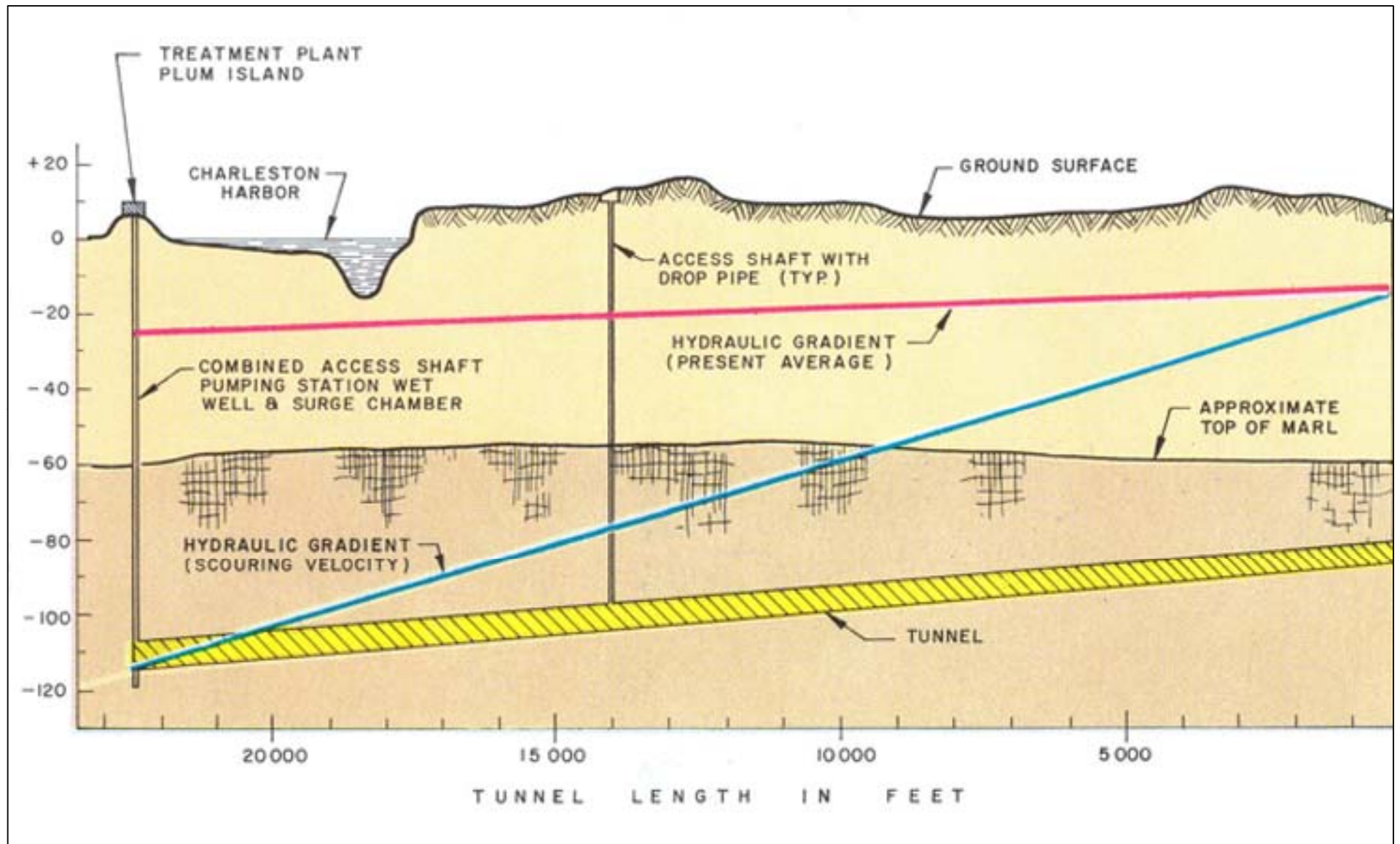
Plum Island Wastewater Treatment Plant on the banks of the Charleston Harbor.





A series of deep tunnels transport wastewater to the Plum Island Treatment Plant.

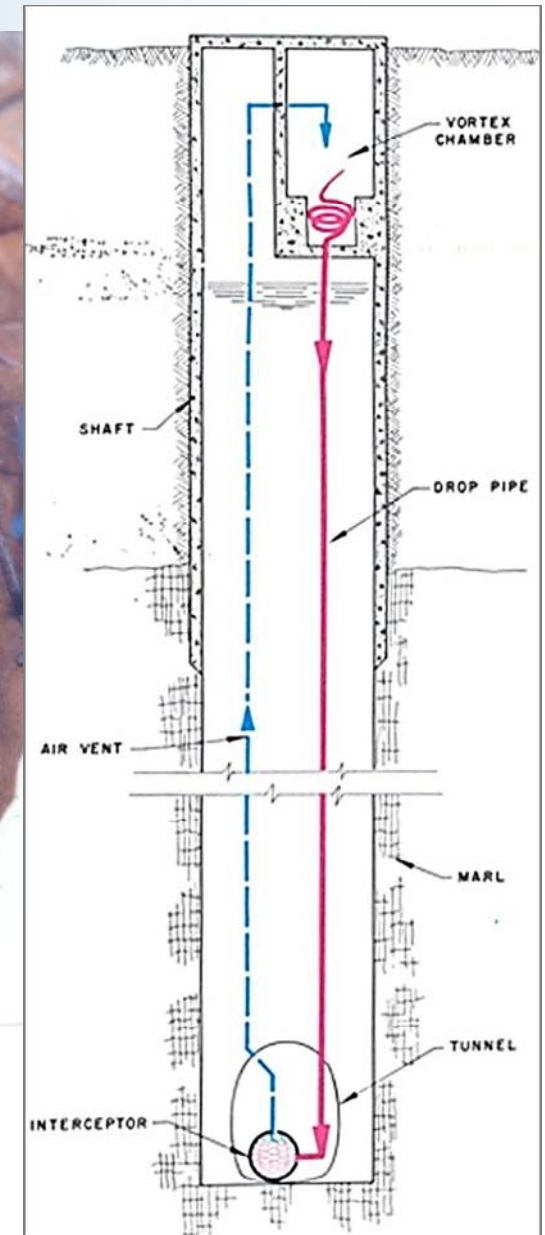






Construction of the deep sewer tunnel system, cir. 1969. The tunnels were built to intercept existing sewer lines and carry wastewater to the new Plum Island treatment plant.





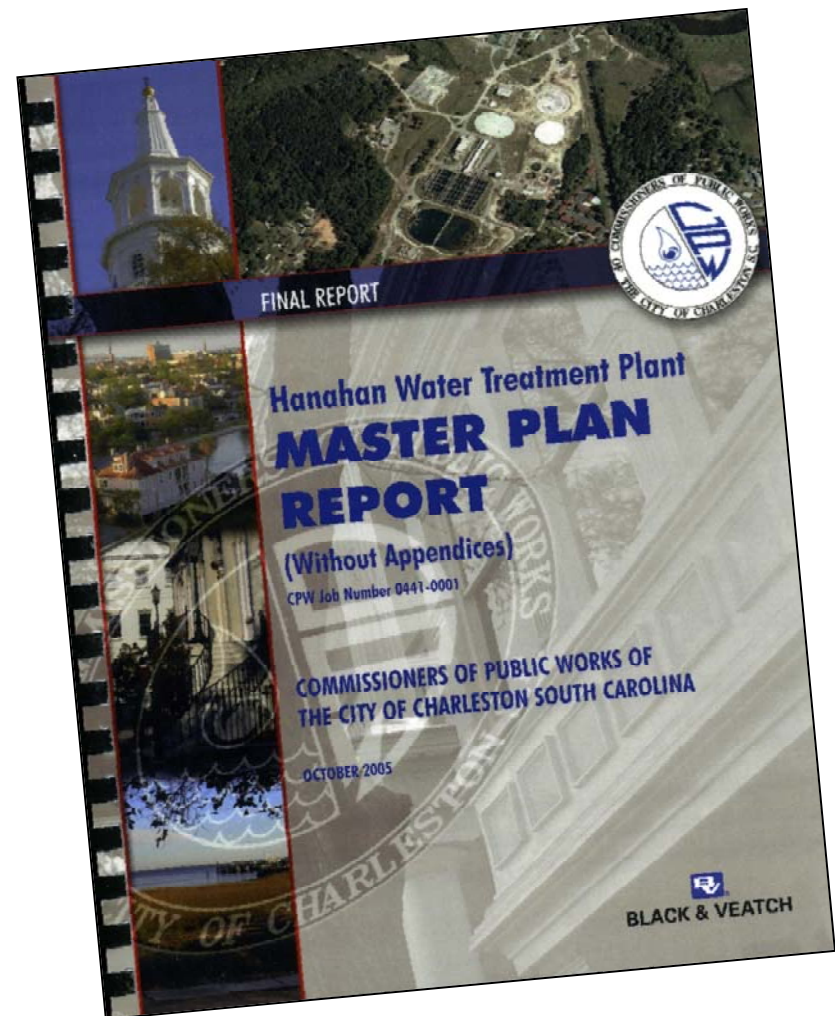
Typical Tunnel Shaft & Drop Pipe

Original Tunnel Construction, 1968-1971 (CWS file photo)



Our \$155 million Capital Improvement Program...

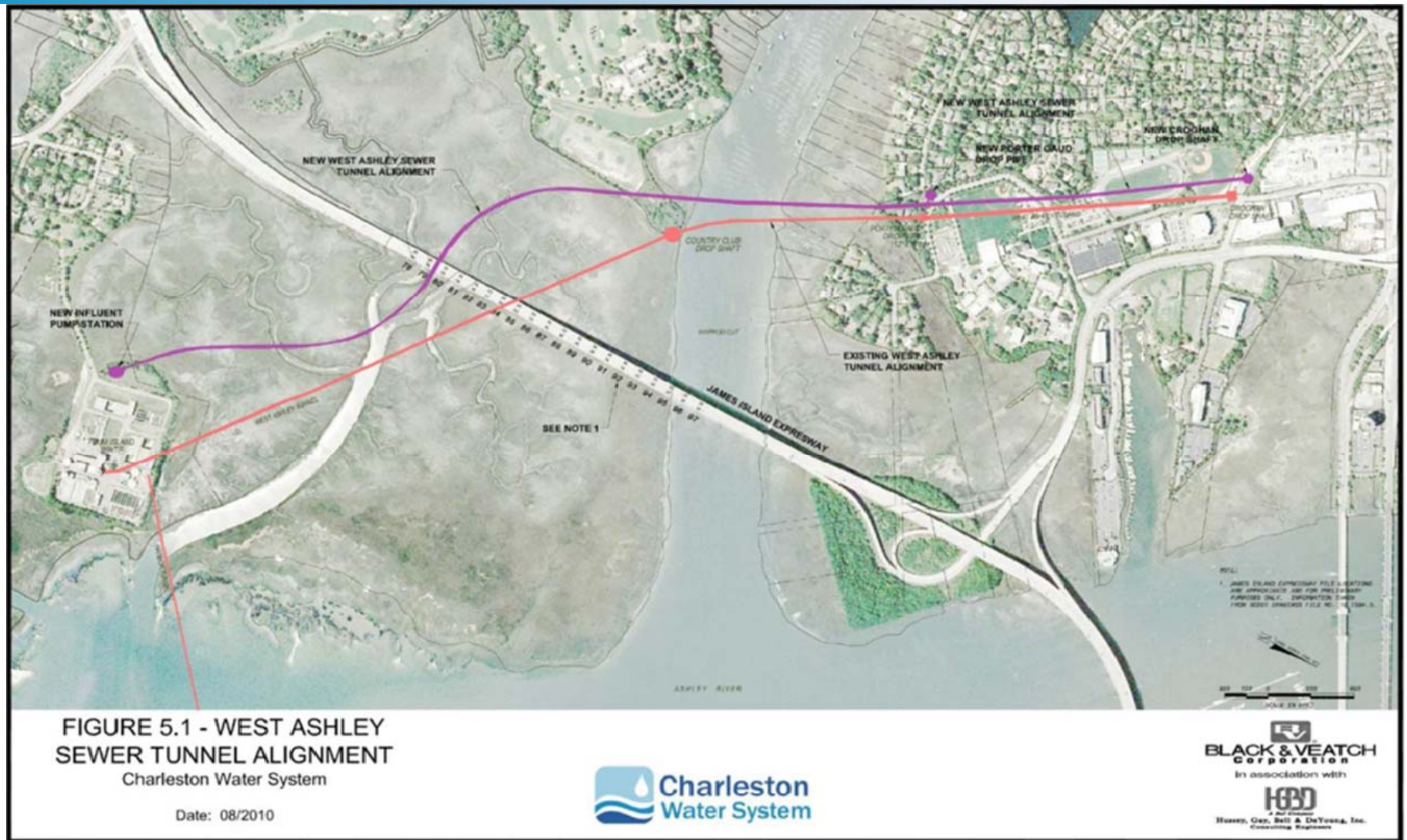
Includes 45 critical projects selected based on master planning and funded by a 2006 bond issue.





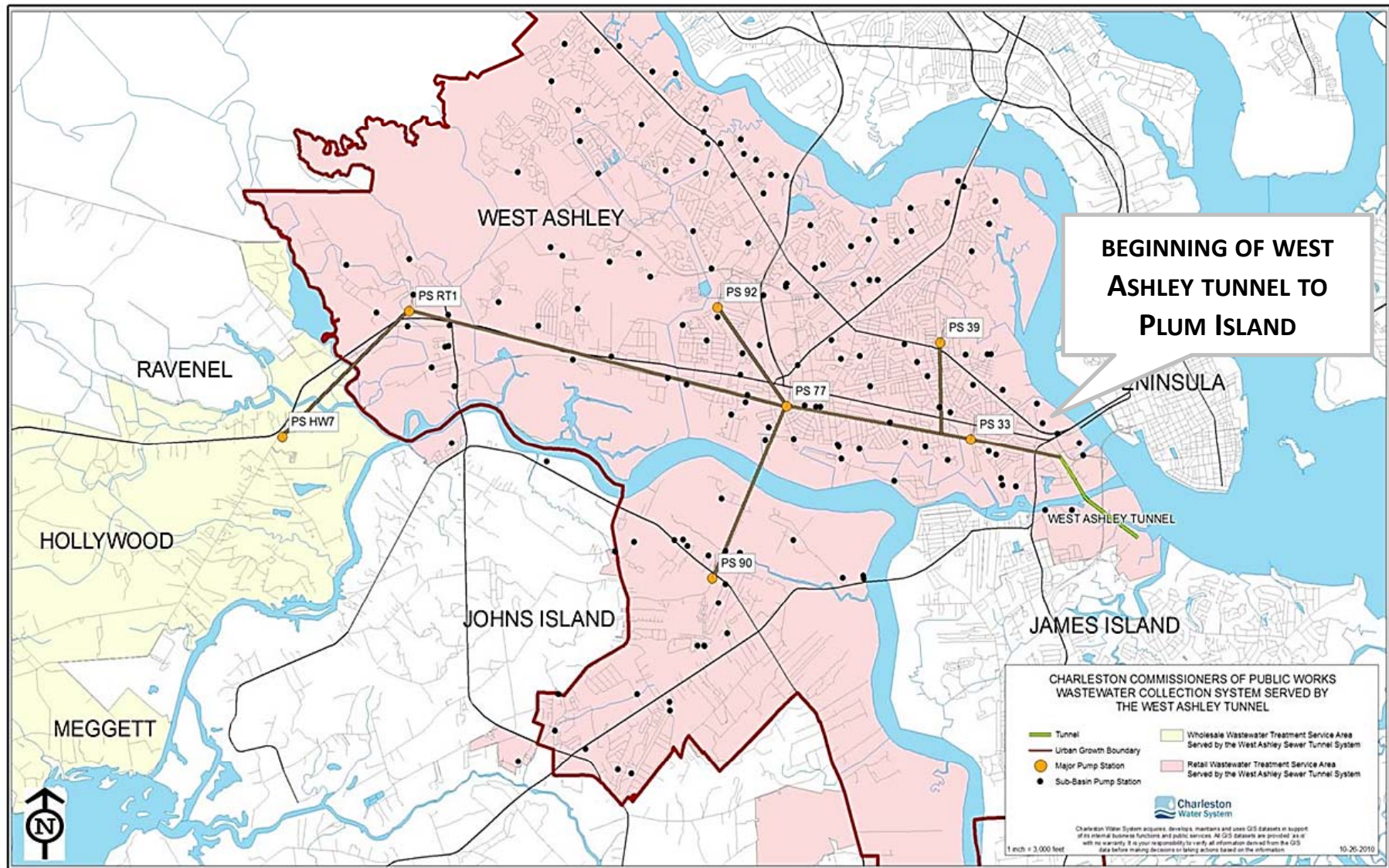
Sewer Tunnel Replacement Project Groundbreaking Ceremony, 2004.





New West Ashley Tunnel Alignment





West Ashley Tunnel Service Area



Questions?

Andy Fairey, Chief Operating Officer
Charleston Water System

faireyaw@charlestoncpw.com

www.charlestonwater.com

