

## Service Charge Index by EPA Region (1985-2010)

Year	Region 1	Region 2	Region 3	Region 4	Region 5	Region 6	Region 7	Region 8	Region 9	Region 10	National
1985	69.8	85.4	121.1	139.0	137.5	106.0	63.4	101.8	63.1	115.4	100.0
1986	80.0	89.6	137.2	144.0	141.3	121.4	68.2	101.9	68.0	124.8	106.8
1987	98.0	100.3	139.1	152.7	136.5	142.4	70.7	102.1	73.4	129.4	112.4
1988	106.2	110.1	142.8	148.1	139.5	155.2	72.2	108.8	85.2	139.0	119.9
1989	143.0	127.2	151.5	155.6	140.3	163.6	74.2	105.6	100.4	150.5	130.1
1990	166.7	147.0	154.3	163.4	145.3	176.0	73.6	115.3	114.8	158.6	141.0
1991	194.4	166.8	185.5	171.1	149.9	168.7	82.3	120.4	131.8	173.7	153.7
1992	218.5	195.3	187.1	178.4	158.0	171.0	92.8	125.8	147.6	193.0	166.7
1993	304.2	196.7	208.7	189.6	166.6	187.4	132.1	137.9	162.4	200.7	183.1
1994	306.0	222.5	213.5	203.8	173.3	191.7	141.6	136.2	173.2	224.9	193.4
1995	303.3	215.2	213.3	215.5	178.9	206.9	142.3	145.9	175.9	245.6	197.8
1996	320.6	206.4	222.6	224.2	180.4	212.1	144.9	143.9	183.2	258.7	201.7
1997	310.2	208.1	222.9	235.3	176.8	211.0	153.5	143.6	187.2	265.2	203.9
1998	314.7	214.6	228.7	234.1	177.8	208.6	160.5	145.3	196.6	272.7	207.8
1999	316.1	222.4	230.1	241.1	182.9	207.0	163.1	150.6	191.5	277.5	209.8
2000	312.6	222.1	237.2	251.5	186.7	212.3	163.9	151.2	202.0	297.5	216.4
2001	310.2	249.0	243.5	257.2	190.0	212.8	170.3	155.4	206.7	305.9	223.5
2002	316.9	268.7	242.9	261.6	201.8	219.6	175.3	154.2	215.1	338.9	232.6
2003	337.6	279.0	237.6	303.0	214.2	222.5	166.9	148.4	214.1	365.1	242.8
2004	364.5	280.9	275.4	292.0	212.7	257.9	179.7	171.2	229.5	376.7	254.5
2005	423.1	313.1	299.2	323.4	227.5	259.0	199.7	167.4	242.3	413.1	276.3
2006	438.3	328.7	319.8	309.5	248.9	278.8	231.0	169.5	260.7	352.9	286.9
2007	507.6	341.8	343.0	337.0	254.4	251.8	229.3	175.1	271.9	371.6	299.4
2008	558.8	365.1	357.3	317.6	270.5	265.3	240.7	172.8	304.5	396.5	315.2
2009	593.5	380.6	389.8	342.6	292.0	283.4	271.9	181.3	338.7	403.7	340.4
2010	587.2	386.5	398.8	386.4	309.4	281.6	268.3	190.6	411.8	438.7	364.3
# of Responses (2010)	8	14	18	33	26	17	11	13	28	13	181
Population (millions)	3.5	13.8	11.7	12.4	18.0	11.9	4.5	2.9	18.4	3.8	100.9

**Note 1:** The value of the Service Charge Index is based on all responses received. The base year, 1985 has been indexed to a value of 100 at the national level.

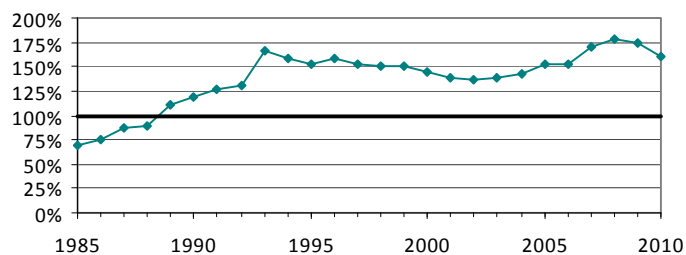
## Service Charge Index Change vs. Inflation Rate by EPA Region (1986-2010)

Year	Region 1	Region 2	Region 3	Region 4	Region 5	Region 6	Region 7	Region 8	Region 9	Region 10	National	CPI
1986	14.6%	4.9%	13.3%	4.1%	2.7%	14.6%	7.7%	0.1%	7.7%	8.2%	6.8%	1.9%
1987	22.4%	11.9%	1.4%	6.0%	-3.4%	17.3%	3.6%	0.2%	7.9%	3.7%	5.3%	3.6%
1988	8.9%	9.8%	2.8%	3.3%	2.2%	8.8%	2.1%	6.5%	15.7%	7.4%	6.9%	4.1%
1989	34.7%	15.6%	6.1%	5.1%	0.6%	5.4%	2.7%	-3.0%	17.1%	8.2%	8.4%	4.8%
1990	20.0%	15.6%	1.9%	5.0%	3.5%	7.6%	-0.8%	9.3%	14.1%	5.4%	8.4%	5.4%
1991	16.6%	13.4%	20.3%	3.7%	3.2%	-4.2%	11.8%	4.4%	14.8%	9.5%	8.9%	4.2%
1992	12.4%	16.9%	2.0%	4.3%	5.4%	1.0%	12.8%	4.4%	11.9%	11.1%	8.5%	3.0%
1993	34.9%	1.4%	1.4%	6.9%	6.1%	9.9%	42.3%	6.9%	10.1%	3.3%	8.3%	3.0%
1994	4.0%	5.0%	2.2%	8.8%	4.0%	2.3%	10.3%	2.8%	6.6%	12.4%	5.1%	2.6%
1995	0.6%	0.9%	-1.3%	4.6%	1.1%	7.9%	-2.8%	6.1%	1.4%	9.2%	2.2%	2.8%
1996	1.8%	4.4%	4.4%	4.0%	2.1%	2.0%	1.8%	0.1%	4.2%	5.3%	3.6%	3.0%
1997	0.4%	1.2%	0.1%	6.0%	-1.8%	-0.6%	6.0%	-0.3%	2.2%	2.5%	1.3%	2.3%
1998	1.6%	3.0%	1.7%	1.6%	0.8%	-1.1%	4.6%	0.5%	5.0%	2.9%	2.4%	1.6%
1999	0.4%	1.5%	0.7%	2.8%	2.4%	-0.6%	2.5%	3.6%	-2.3%	1.9%	0.7%	2.2%
2000	0.1%	1.8%	-0.1%	3.4%	2.3%	2.6%	-2.9%	0.4%	6.0%	7.2%	3.0%	3.4%
2001	1.5%	2.3%	2.6%	3.2%	1.4%	0.5%	3.9%	2.1%	2.1%	2.8%	2.2%	2.8%
2002	1.9%	5.1%	-0.2%	1.9%	6.3%	1.6%	3.2%	-0.8%	3.9%	10.2%	3.6%	1.6%
2003	7.3%	5.3%	-0.7%	5.6%	6.2%	1.1%	1.7%	-3.7%	0.1%	4.7%	3.1%	2.3%
2004	11.8%	2.7%	16.6%	7.0%	-0.5%	14.5%	11.4%	2.9%	5.8%	5.8%	6.5%	2.7%
2005	17.4%	4.6%	6.3%	9.0%	10.6%	4.4%	11.3%	0.2%	4.6%	9.0%	7.3%	3.4%
2006	6.3%	8.0%	6.6%	3.3%	8.9%	7.2%	3.7%	1.3%	4.3%	4.6%	6.0%	3.2%
2007	10.9%	4.3%	6.7%	5.5%	3.0%	-7.5%	0.9%	3.6%	10.0%	5.6%	6.0%	2.8%
2008	5.5%	11.1%	3.7%	1.8%	3.5%	3.6%	11.3%	0.0%	6.4%	5.3%	5.5%	3.9%
2009	6.0%	6.1%	8.5%	5.5%	8.4%	7.2%	5.9%	3.5%	9.9%	3.9%	7.6%	-0.4%
2010	4.4%	2.2%	3.8%	10.6%	5.9%	0.7%	9.0%	-3.2%	4.5%	6.9%	4.6%	1.6%

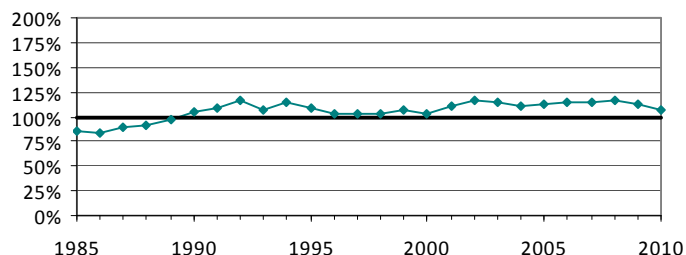
**Note 2:** The annual percent change in the Index (national and regional) is based on the responses of those agencies that responded in both the previous year and current year using the same calculation method.

## Regional Service Charge Index as a Percent of the National Average (1985-2010)

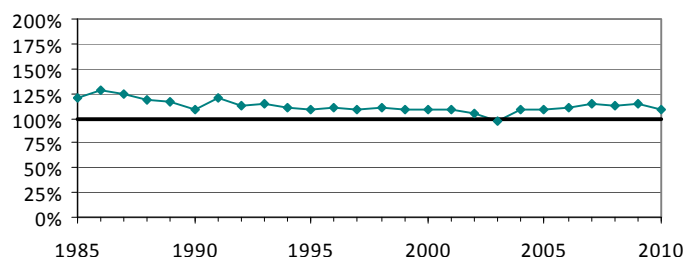
EPA Region 1



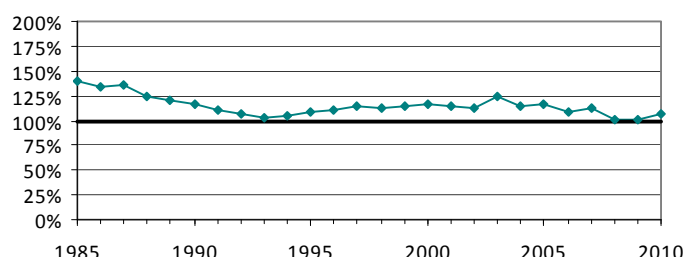
EPA Region 2



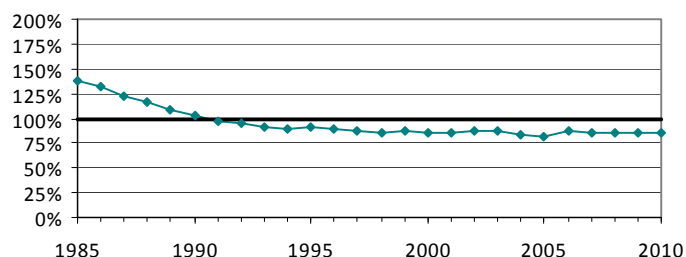
EPA Region 3



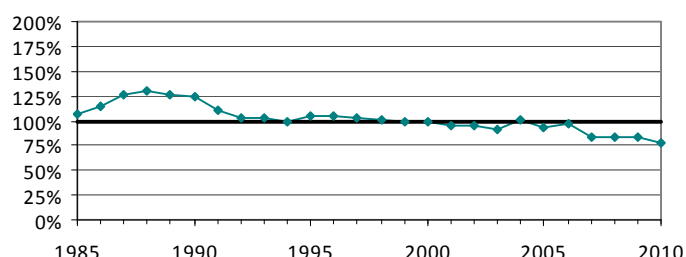
EPA Region 4



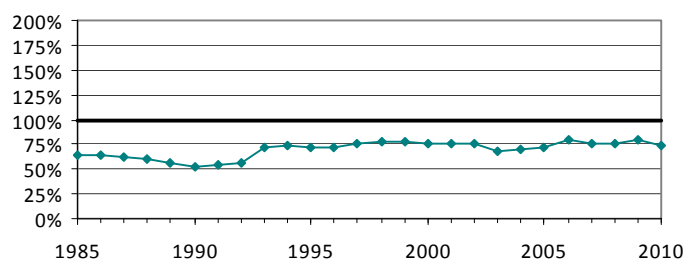
EPA Region 5



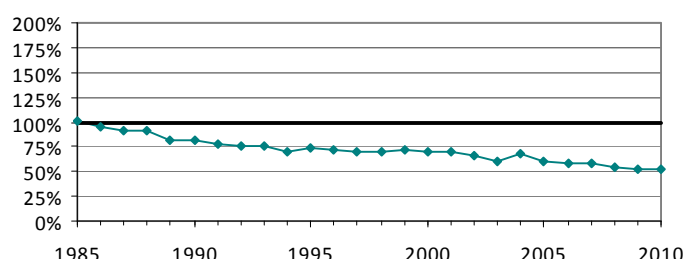
EPA Region 6



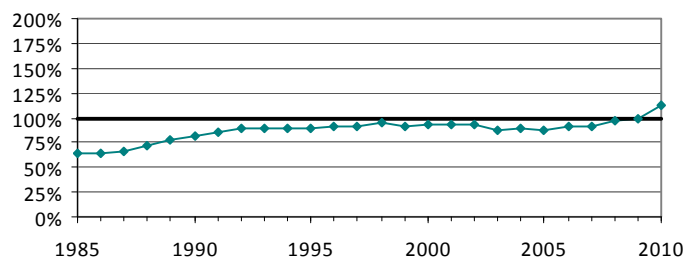
EPA Region 7



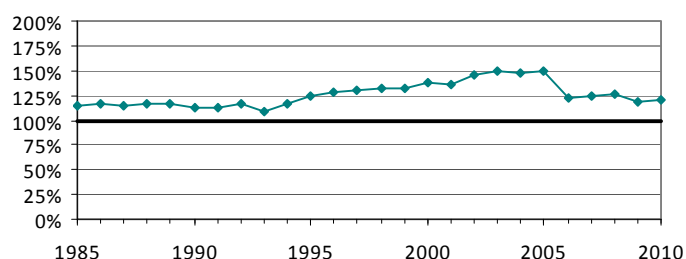
EPA Region 8



EPA Region 9



EPA Region 10

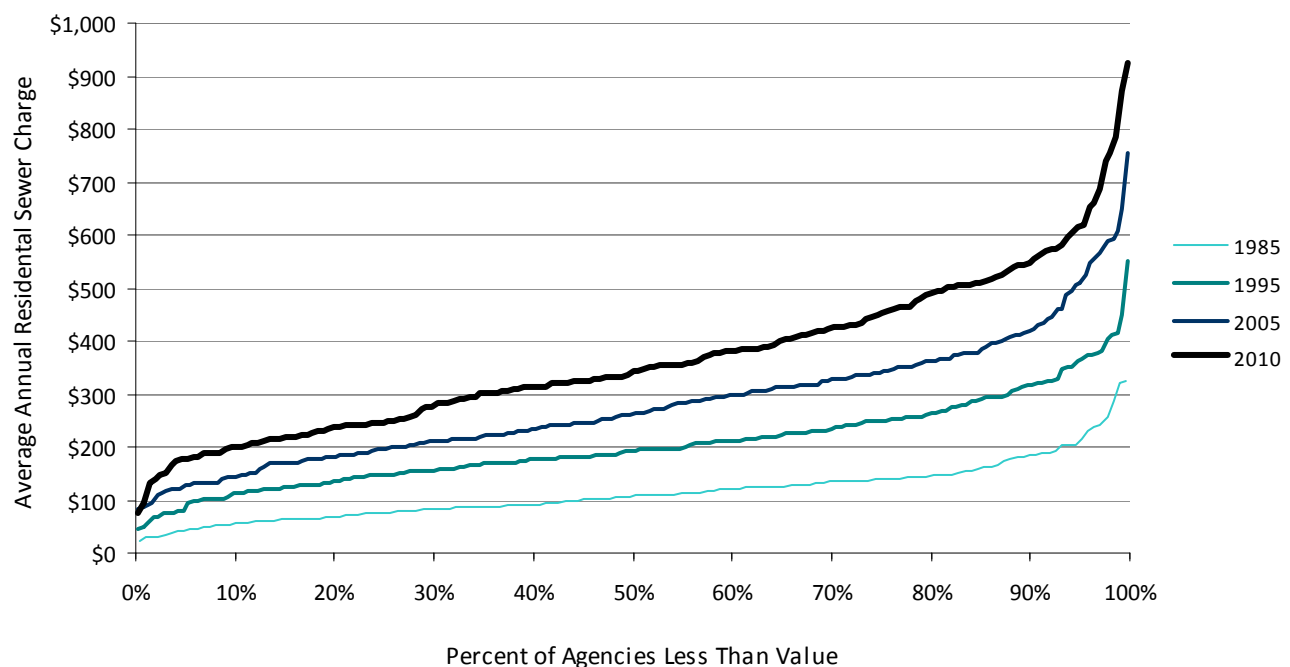


## Average Annual Sewer Service Charge by EPA Region (1985-2010)

Year	Region 1	Region 2	Region 3	Region 4	Region 5	Region 6	Region 7	Region 8	Region 9	Region 10	National
1985	\$71.74	\$87.74	\$124.46	\$142.85	\$141.32	\$108.90	\$65.12	\$104.57	\$64.87	\$118.54	\$102.75
1986	\$82.23	\$92.07	\$140.97	\$147.95	\$145.19	\$124.77	\$70.12	\$104.70	\$69.87	\$128.23	\$109.69
1987	\$100.65	\$103.02	\$142.94	\$156.86	\$140.29	\$146.30	\$72.68	\$104.95	\$75.39	\$132.98	\$115.51
1988	\$109.09	\$113.10	\$146.69	\$152.13	\$143.33	\$159.47	\$74.20	\$111.79	\$87.50	\$142.84	\$123.17
1989	\$146.94	\$130.73	\$155.64	\$159.89	\$144.18	\$168.07	\$76.20	\$108.46	\$103.14	\$154.60	\$133.65
1990	\$171.31	\$151.08	\$158.54	\$167.91	\$149.25	\$180.86	\$75.60	\$118.51	\$117.91	\$162.91	\$144.84
1991	\$199.77	\$171.40	\$190.65	\$175.78	\$154.06	\$173.30	\$84.55	\$123.73	\$135.38	\$178.43	\$157.88
1992	\$224.52	\$200.66	\$192.20	\$183.28	\$162.39	\$175.65	\$95.38	\$129.22	\$151.63	\$198.31	\$171.33
1993	\$312.62	\$202.08	\$214.43	\$194.79	\$171.21	\$192.52	\$135.78	\$141.67	\$166.91	\$206.26	\$188.12
1994	\$314.46	\$228.65	\$219.33	\$209.38	\$178.02	\$196.97	\$145.44	\$139.99	\$177.98	\$231.06	\$198.68
1995	\$311.61	\$221.16	\$219.13	\$221.46	\$183.78	\$212.54	\$146.26	\$149.95	\$180.75	\$252.36	\$203.22
1996	\$329.39	\$212.09	\$228.72	\$230.37	\$185.35	\$217.93	\$148.84	\$147.90	\$188.26	\$265.79	\$207.28
1997	\$318.71	\$213.84	\$229.04	\$241.79	\$181.65	\$216.85	\$157.71	\$147.52	\$192.36	\$272.46	\$209.49
1998	\$323.37	\$220.48	\$234.95	\$240.56	\$182.65	\$214.37	\$164.92	\$149.30	\$202.00	\$280.25	\$213.52
1999	\$324.77	\$228.57	\$236.39	\$247.73	\$187.89	\$212.70	\$167.56	\$154.73	\$196.78	\$285.14	\$215.61
2000	\$321.19	\$228.20	\$243.75	\$258.41	\$191.88	\$218.11	\$168.41	\$155.33	\$207.56	\$305.72	\$222.31
2001	\$318.72	\$255.85	\$250.23	\$264.27	\$195.22	\$218.68	\$174.99	\$159.72	\$212.39	\$314.30	\$229.63
2002	\$325.60	\$276.08	\$249.55	\$268.74	\$207.32	\$225.66	\$180.12	\$158.41	\$220.99	\$348.21	\$238.95
2003	\$346.87	\$286.70	\$244.16	\$311.31	\$220.11	\$228.64	\$171.49	\$152.46	\$220.01	\$375.13	\$249.44
2004	\$374.54	\$288.61	\$282.95	\$300.02	\$218.75	\$264.95	\$184.68	\$175.91	\$235.86	\$387.05	\$261.48
2005	\$434.72	\$321.74	\$307.43	\$332.32	\$234.03	\$266.10	\$205.16	\$172.02	\$248.99	\$424.45	\$283.91
2006	\$450.31	\$337.77	\$328.61	\$317.28	\$257.38	\$286.47	\$237.39	\$174.16	\$267.88	\$362.63	\$294.98
2007	\$521.61	\$351.17	\$352.44	\$346.23	\$261.41	\$258.73	\$235.62	\$179.91	\$279.37	\$381.80	\$307.60
2008	\$574.21	\$375.19	\$367.16	\$326.39	\$277.94	\$272.61	\$247.33	\$177.53	\$312.89	\$407.39	\$323.89
2009	\$609.84	\$391.05	\$400.51	\$351.99	\$300.08	\$291.17	\$279.35	\$186.26	\$347.99	\$414.81	\$349.90
2010	\$603.38	\$397.14	\$409.75	\$396.98	\$317.92	\$289.33	\$275.64	\$195.80	\$423.15	\$450.81	\$374.37
# of Responses	8	14	18	33	26	17	11	13	28	13	181
Population (millions)	3.5	13.8	11.7	12.4	18.0	11.9	4.5	2.9	18.4	3.8	100.9

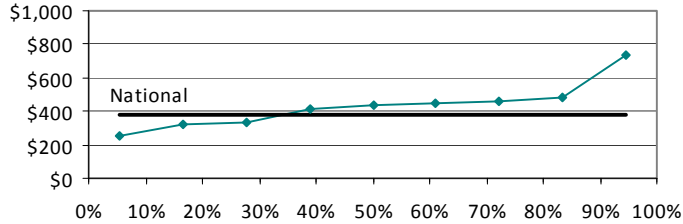
**Note 1:** The value of the Service Charge Index is based on all responses received. The base year, 1985 has been indexed to a value of 100 at the national level.

## Distribution Trend of Average Annual Residential Sewer Charge (National)

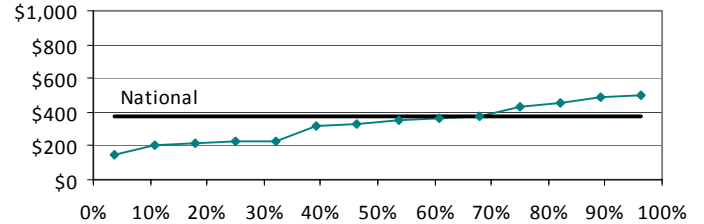


## Regional Distribution of Service Charges (2010) (Charge vs. Percent of Charges Less Than Value)

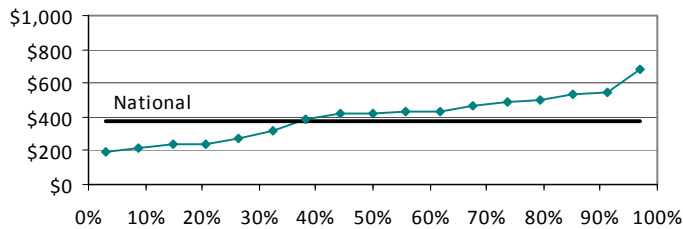
EPA Region 1



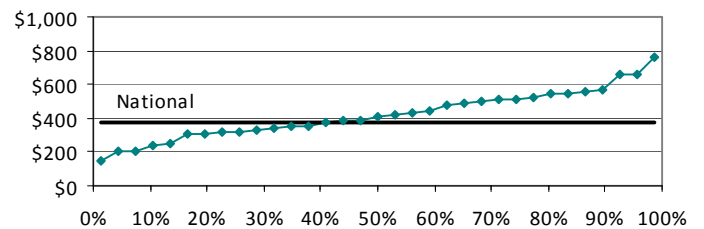
EPA Region 2



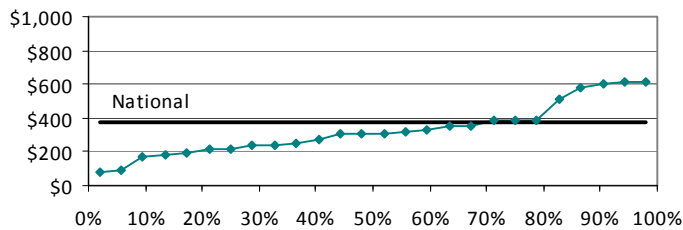
EPA Region 3



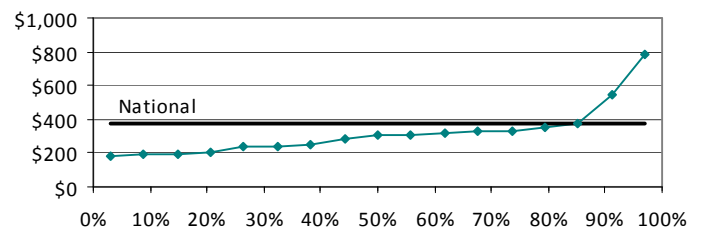
EPA Region 4



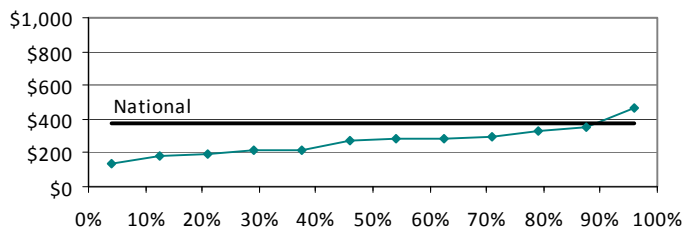
EPA Region 5



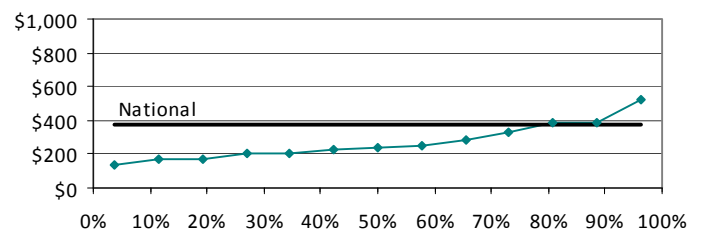
EPA Region 6



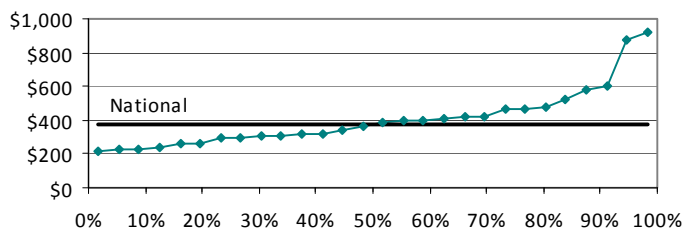
EPA Region 7



EPA Region 8



EPA Region 9



EPA Region 10

