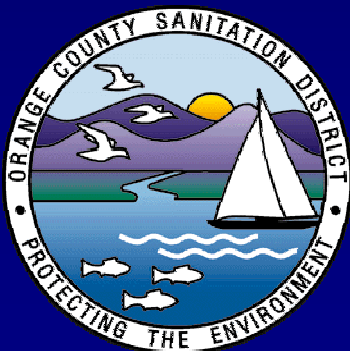


2010 NACWA National Pretreatment and Pollution Prevention Workshop  
May 19-21, 2010 – Phoenix, AZ

Panel Discussion

# Flushable Wipes Clogging Pipes

## *What Can be Done?*



**Nick Arhontes, P.E. – Director of O&M**  
Orange County Sanitation District, California  
[www.ocsd.com](http://www.ocsd.com)

# OCSD Service Area

479 square miles

213 million gallons per day

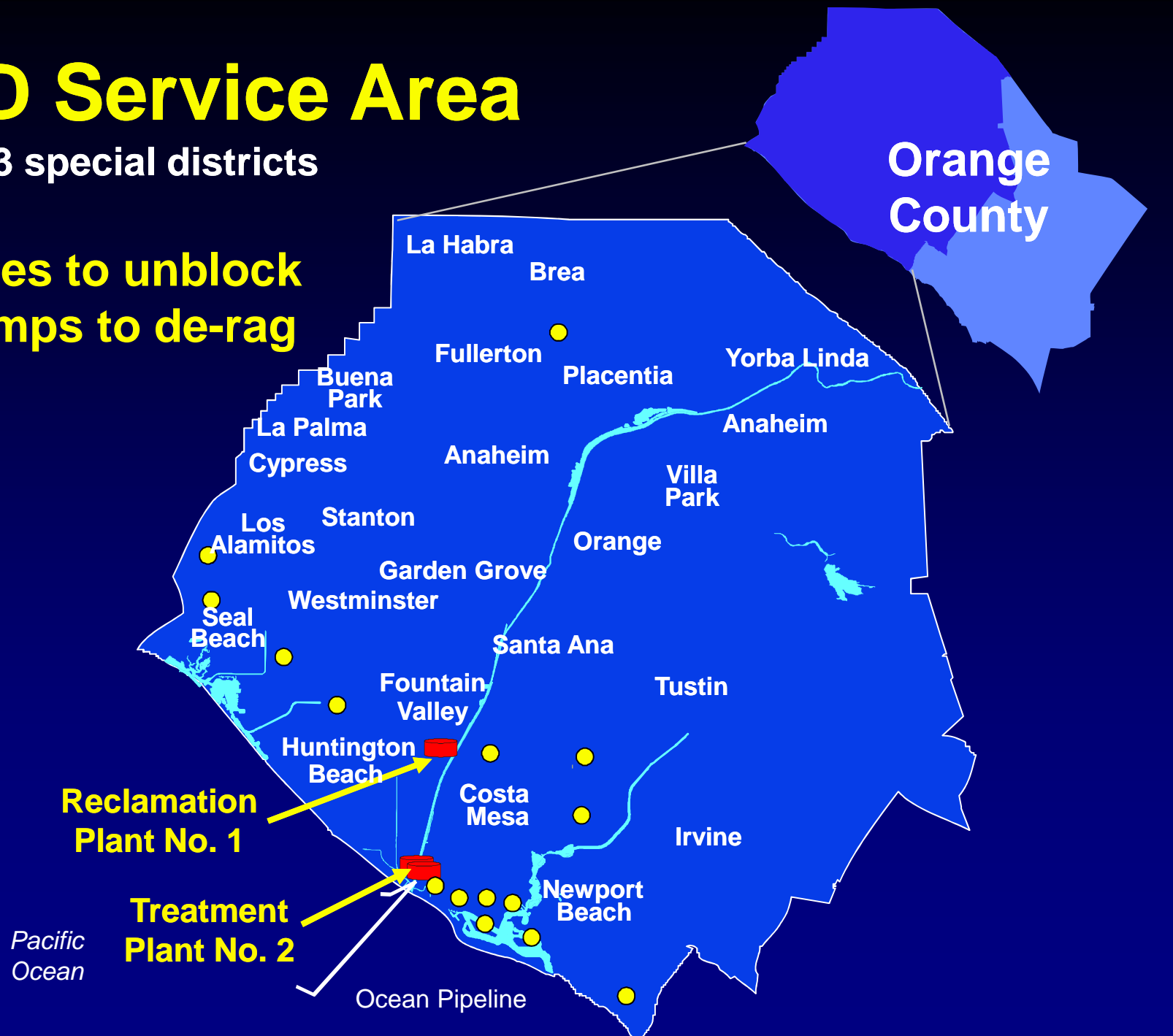
2.5 million population

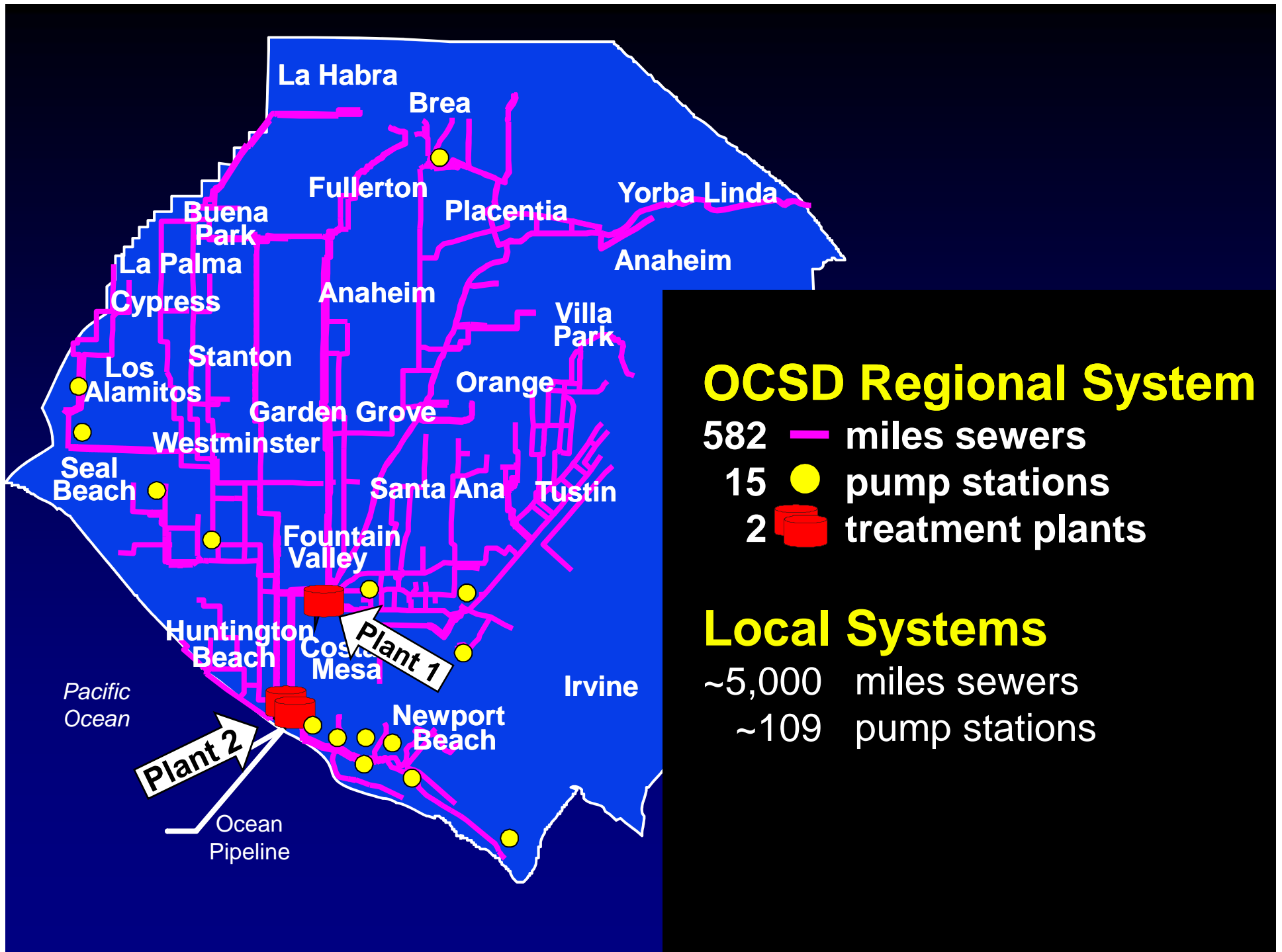


# OCSD Service Area

21 cities, 3 special districts

**More pipes to unblock**  
**More pumps to de-rag**



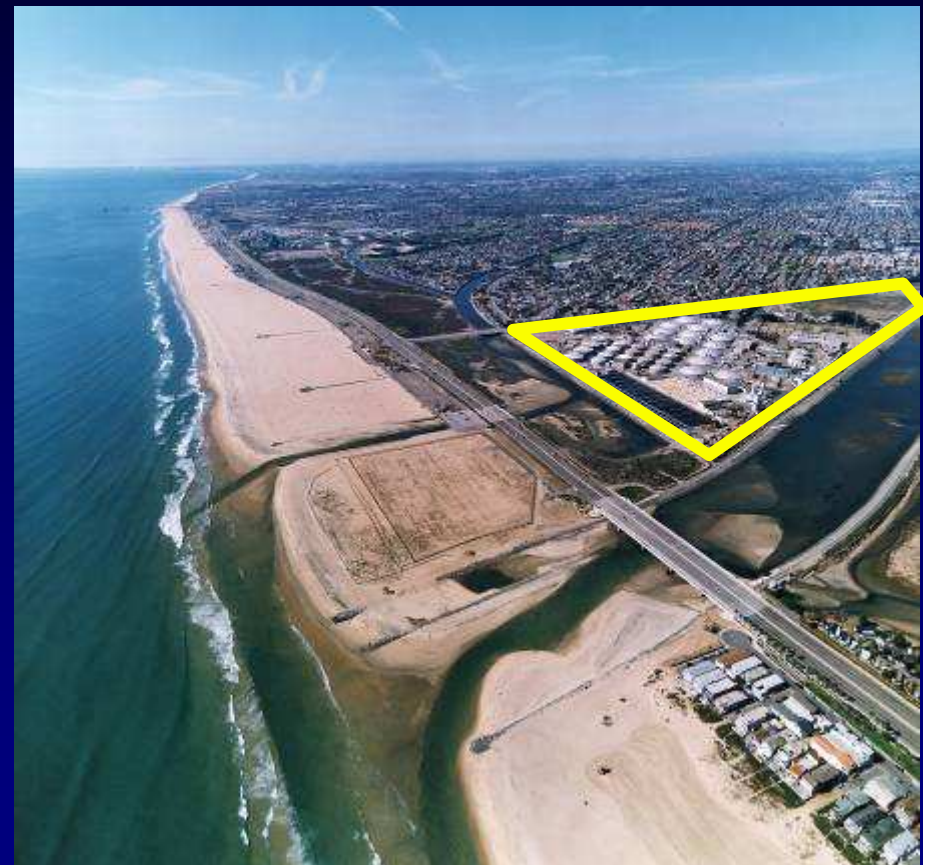


# Orange County Sanitation District

Treatment Facilities in Southern California



**Reclamation Plant No. 1**  
Fountain Valley



**Treatment Plant No. 2**  
Huntington Beach



# Presentation Outline

- ◆ Sample photos
- ◆ California plumbing code prohibitions
- ◆ Statewide WDR Order
- ◆ NACWA's guidance doc
- ◆ AB 2256 in California
- ◆ How can INDA help?
- ◆ Next steps?



# Toilet Paper Dissolves Quickly



4 hours heavy stirring

# Flushable But Not Dispersible Wipes







clogged pump  
suction



Photo courtesy of Costa Mesa Sanitary District





Photo courtesy of Costa Mesa Sanitary District





clogged  
check valve



Photo courtesy of Costa Mesa Sanitary District

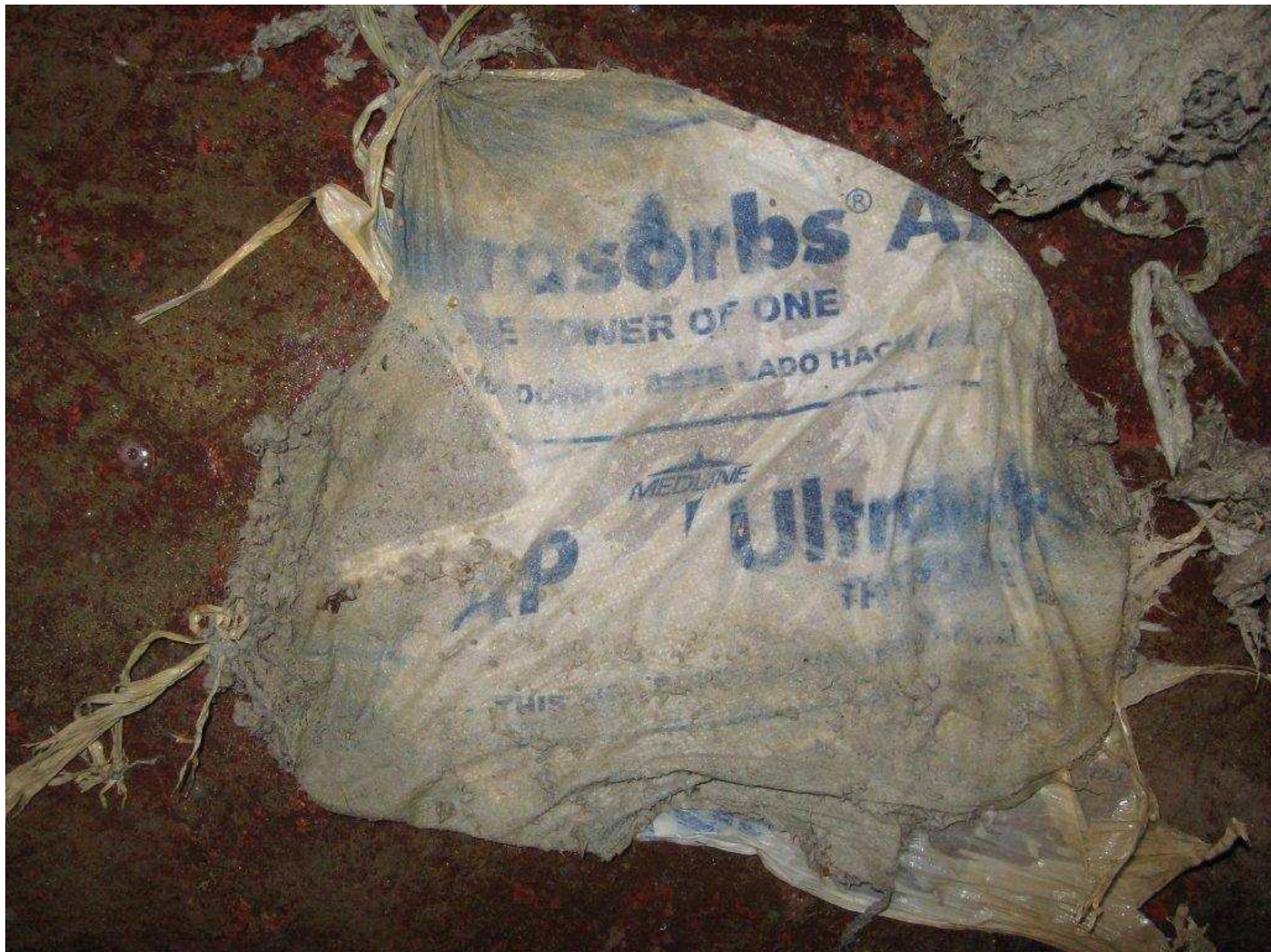












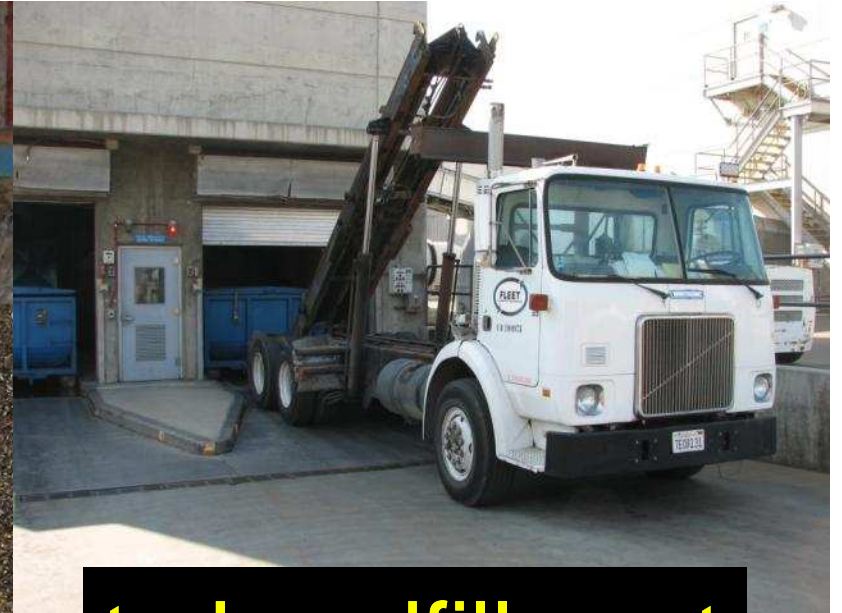




Bar screen at OCSD  
wastewater treatment plant







to Landfill next



# OCSD Plant No. 1

## Rag Bin Building



# California Uniform Plumbing Code

## Chapter 3 § 306.1 Damage to Drainage System or Public Sewer...



Product  
Certification



Product  
Testing



Product Standards  
Development



ISO Registrar



Code Development



Building  
Evaluation

[Code Development](#) | [Membership](#) | [Chapters](#) | [Training & Certification](#) | [Publications](#) | [About Us](#) | [Industry Links](#)



[www.iapmo.org](http://www.iapmo.org)



IAPMO

[Job Search](#)

[Become a Member](#)

[IAPMO Certified](#)

**IAPMO**

The International Association of Plumbing and Mechanical Officials has been protecting the public's health and safety for more than eighty years by working in concert with government and industry to implement comprehensive plumbing and mechanical systems around the world.

# California Uniform Plumbing Code

## Chapter 3 § 306.1 Damage to Drainage System or Public Sewer...

It shall be unlawful for any person to deposit, by any means whatsoever, into any plumbing fixture, or floor drain, interceptor, sump, receptor, or device, which is connected to any drainage system, public sewer, private sewer, septic tank, or cesspool, any ashes; cinders; solids; **rags**; inflammable, poisonous, or explosive liquids or gases; oils; grease; **or any other thing whatsoever** that would, or could, cause damage to the drainage system or public sewer.



# Statewide WDR Order No. 2006-003 to reduce sewer spills in California

- ◆ Stronger version of EPA's old, unpublished SSO rule....a.k.a. cMOM
- ◆ Download at:  
[www.waterboards.ca.gov/water\\_issues/programs/ssol/](http://www.waterboards.ca.gov/water_issues/programs/ssol/)
- ◆ Provides minimum requirements
- ◆ What's next nationally ?





- ◆ Final draft will be released by NACWA in 2010
- ◆ [www.nacwa.org](http://www.nacwa.org)
- ◆ Provides guidance to owners
- ◆ Helps improve O&M
- ◆ Helps reduce sewer spills

### Core Attributes of Effectively Managed Wastewater Collection Systems

# Proposed AB 2256

## Product labeling: flushable products

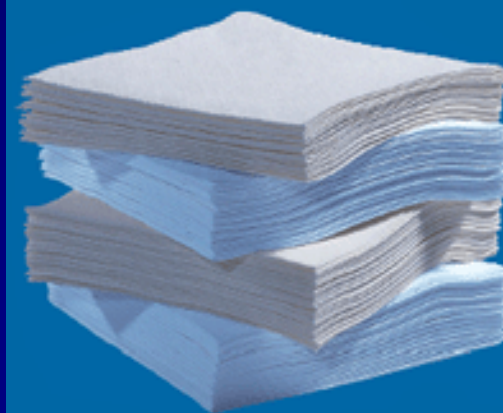
- ◆ Sponsor: Assembly Member Huffman
- ◆ [www.sen.ca.gov](http://www.sen.ca.gov)



# How can INDA help the wastewater industry... its ratepayers... and its consumers?

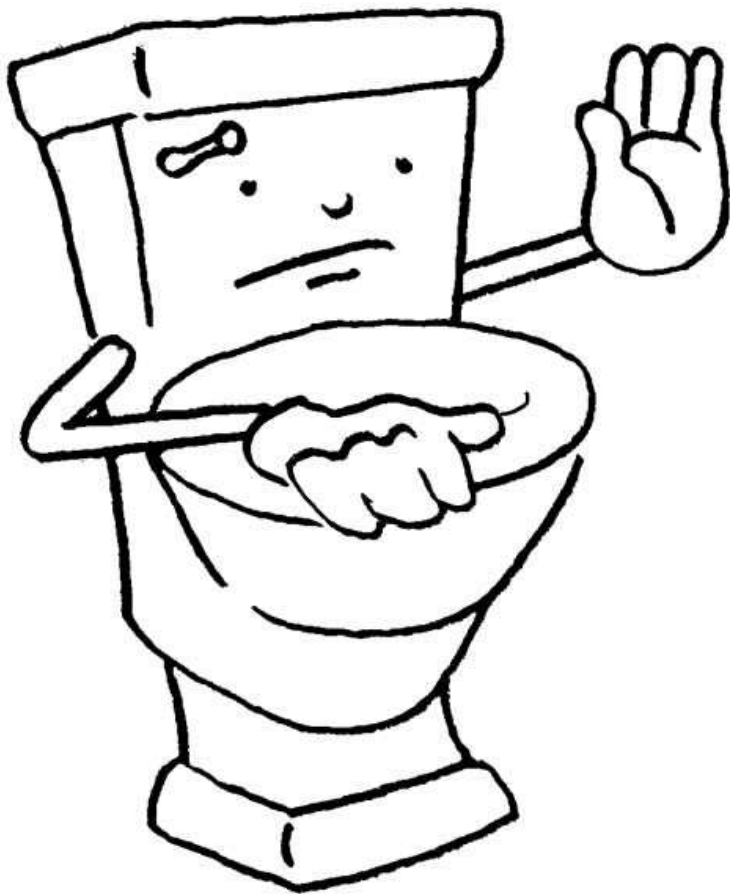
- ◆ Real lab testing is needed
- ◆ Not just a problem for OCSD and California
- ◆ Non woven product “re-formulation” needed?
- ◆ “Compounds of concern” in nonwovens?
- ◆ Improved labeling for consumers and industrial users

Association of the  
Nonwovens Fabrics  
Industry



# Next Steps? Other options and ideas?

## Put Flushables in the Trash, Not the Sewer



Graphic courtesy of King County

- ◆ Sewers and treatment plants are not a cost effective mean to send rags to a landfill
- ◆ The trash can is
- ◆ Help prevent sewer spills and reduce O&M costs
- ◆ Help provide better functioning sewers and treatment systems



# Thank You!

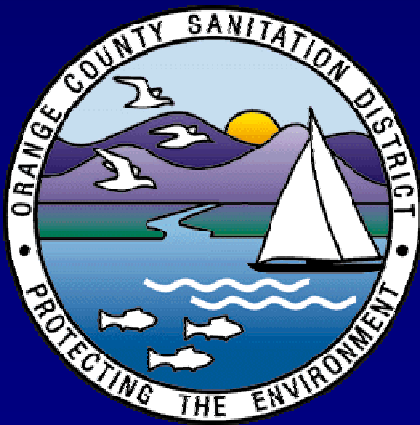
# Questions?

**Nick Arhontes, P.E.**

Director, O&M Department

**(714) 593-7210**

[narhontes@ocsd.com](mailto:narhontes@ocsd.com)



**Orange County Sanitation District**

[www.ocsd.com](http://www.ocsd.com)

*A proactive NACWA member agency*