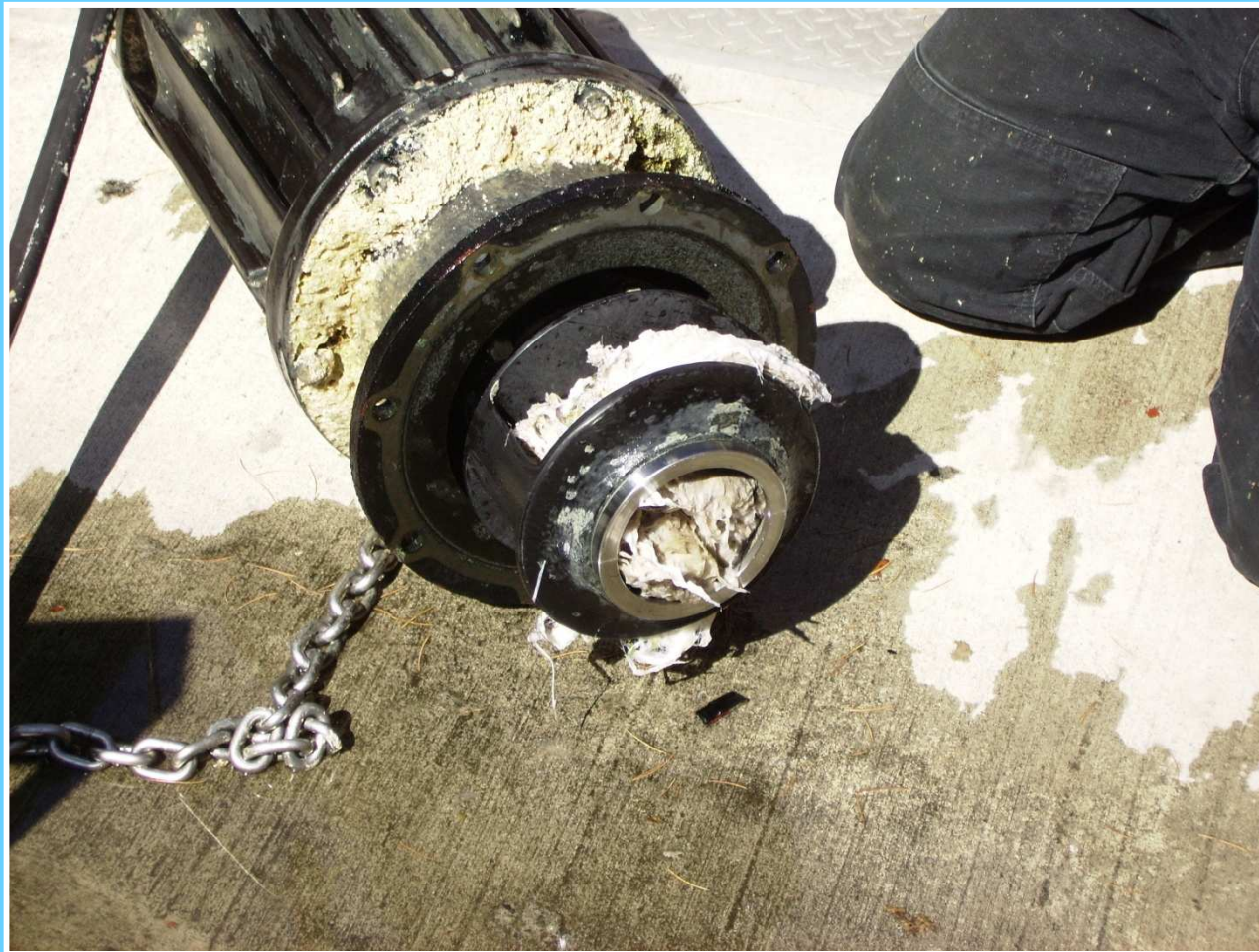


Wastewater folks don't like Wipes...

Or rags, or non-dispersible personal care or household products.



What's the Problem?



They Clog our Pumps...



They Plug our Pipes...



They Hang on the Bar Screens...



Plug the Screw Conveyers...



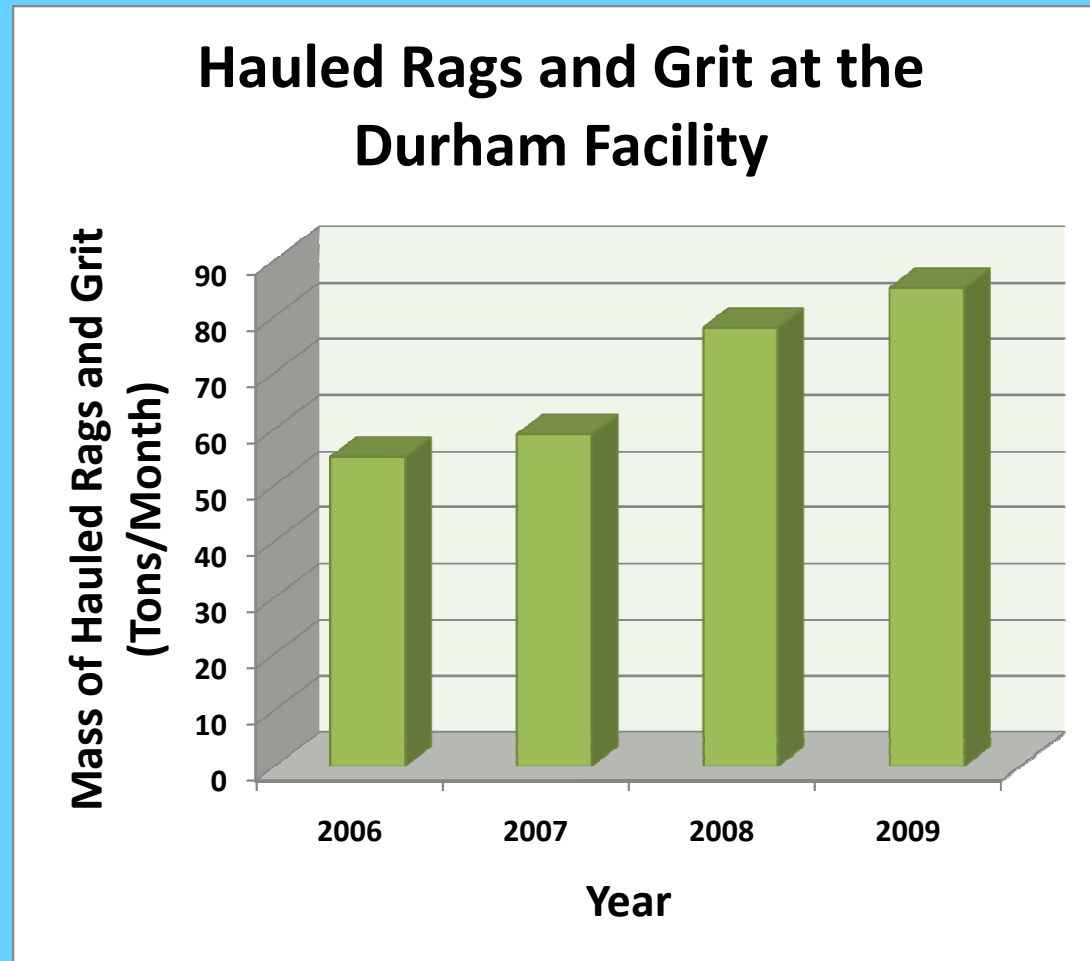
Increase our Solids Disposal Costs...



And Generally are a Pain.

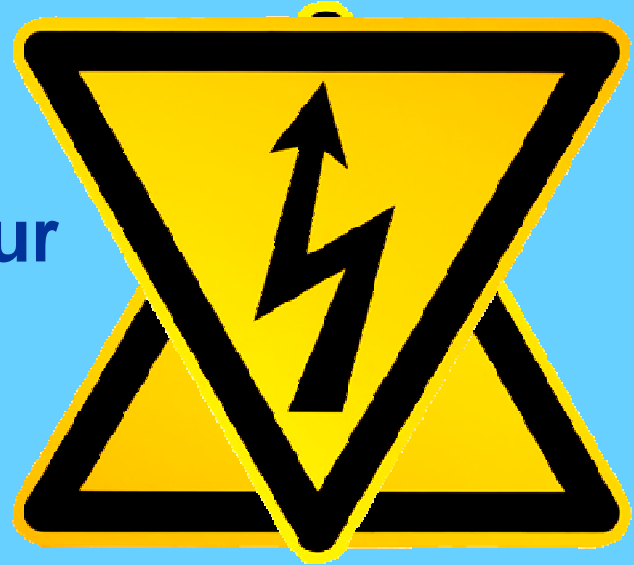


Solid Waste Disposal Increases...



Electricity Use? It goes UP!

- “If we installed chopper pumps instead of cleaning rags out of the wet wells, our energy consumption would go up. Chopper pumps are not as energy efficient as fluid pumps.”



But they are “flushable”... they make it down the toilet and out of the house drain...



Public Outreach



Wipes clog pipes!

Many household cleaning products are labeled and marketed as “disposable” but should not be flushed. Items include:

- disinfecting wipes
- baby wipes
- mop refills
- paper towels
- towelettes

These products don't dissolve. They clog pipes and cause expensive and time consuming repairs for homeowners. These products also clog public sewer pipes and pump station equipment leading to sewer backups. Save yourself and your wastewater utility from a pain in the drain — *put wipes, rags and towels in the trash, not the toilet.*



(503) 681-3600
www.cleanwaterservices.org

CleanWater  Services

CleanWater  Services
CELEBRATING 40 YEARS OF CLEAN WATER



Can the Wipes.


Wipes, rags and towelettes that are flushed down the toilet lead to clogged pipes, sewer backups and expensive repairs.

So make sure you throw all cleaning materials in the trash.

From the rain to the river to the faucet at home, our water moves in one big cycle. Help us keep it clean by doing your part.

Find out how at cleanwaterservices.org/wipes.

Join the Cycle.

CleanWater  Services

cleanwaterservices.org

CleanWater  Services

CELEBRATING 40 YEARS OF CLEAN WATER