

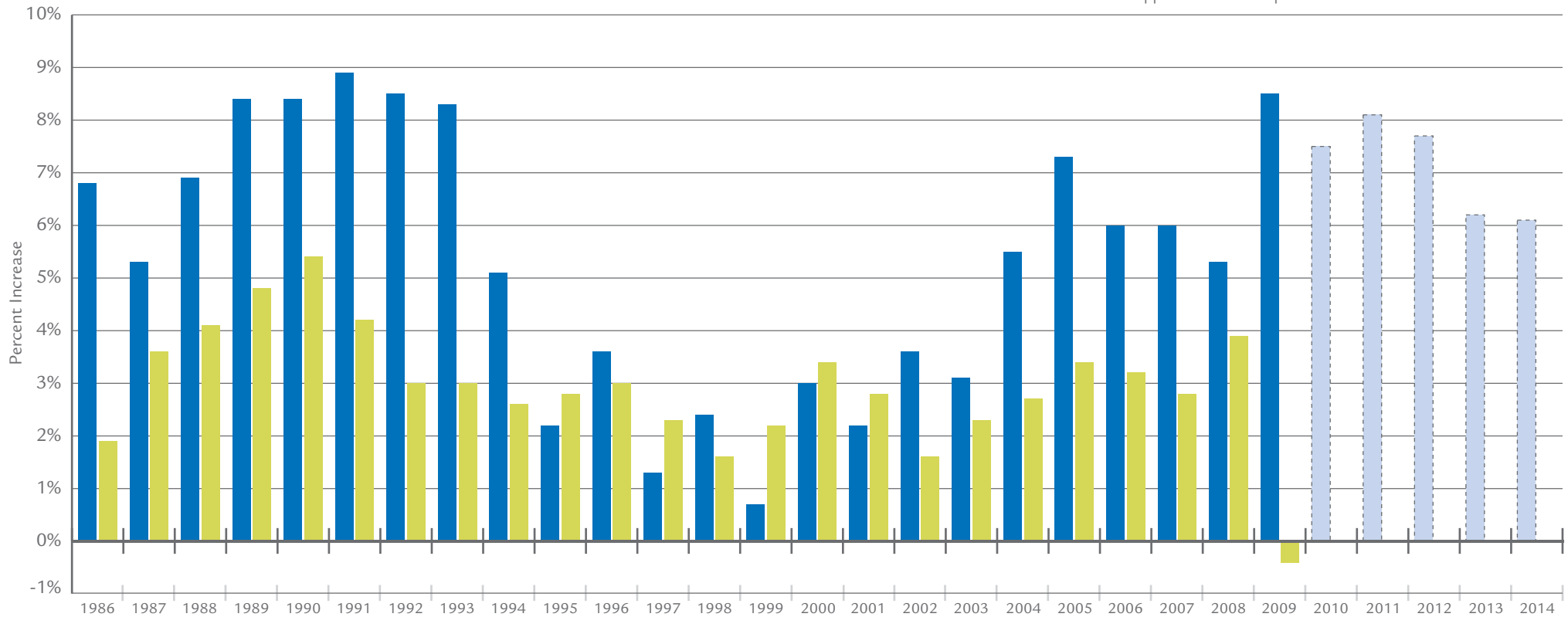


Service Charge Index vs. Inflation

■ = NACWA Index

■ = Consumer Price Index

■ = 2010 to 2014 Projected Service Charge Index Changes
Based on Approved and Anticipated Rate Increases



	1985	1986	1987	1988	1989	1990	1991	1992	1993	1994	1995	1996	1997	1998	1999	2000	2001	2002	2003	2004	2005	2006	2007	2008	2009
NACWA Index	100.0	106.8	112.4	119.9	130.1	141.0	153.7	166.7	183.1	193.4	197.8	201.7	203.9	207.8	209.8	216.4	223.5	232.6	242.8	252.1	273.7	284.2	296.4	309.8	337.5
Increase from Previous Year		6.8%	5.3%	6.9%	8.4%	8.4%	8.9%	8.5%	8.3%	5.1%	2.2%	3.6%	1.3%	2.4%	0.7%	3.0%	2.2%	3.6%	3.1%	5.5%	7.3%	6.0%	6.1%	5.4%	8.5%
Average Service Charge (\$)	102.75	109.69	115.51	123.17	133.65	144.84	157.88	171.33	188.12	198.68	203.22	207.28	209.49	213.52	215.61	222.31	229.63	238.95	249.44	259.00	281.27	291.93	304.52	318.28	346.90
Increase from Previous Year (\$)		6.95	5.82	7.99	10.35	11.25	12.84	13.84	13.78	10.32	4.23	6.44	2.88	4.89	1.90	6.41	4.47	8.45	7.69	13.50	18.64	16.98	16.40	17.84	25.29
Change to Consumer Price Index		1.9%	3.6%	4.1%	4.8%	5.4%	4.2%	3.0%	3.0%	2.6%	2.8%	3.0%	2.3%	1.6%	2.2%	3.4%	2.8%	1.6%	2.3%	2.7%	3.4%	3.2%	2.8%	3.8%	-0.4%
Total Responses	155	158	157	163	166	169	171	175	184	194	199	205	208	214	224	234	238	221	233	223	213	203	196	197	173
Total Responses in Both Previous and Current Year		155	157	157	163	166	169	171	170	182	189	195	202	204	210	218	227	215	198	200	188	177	173	164	160

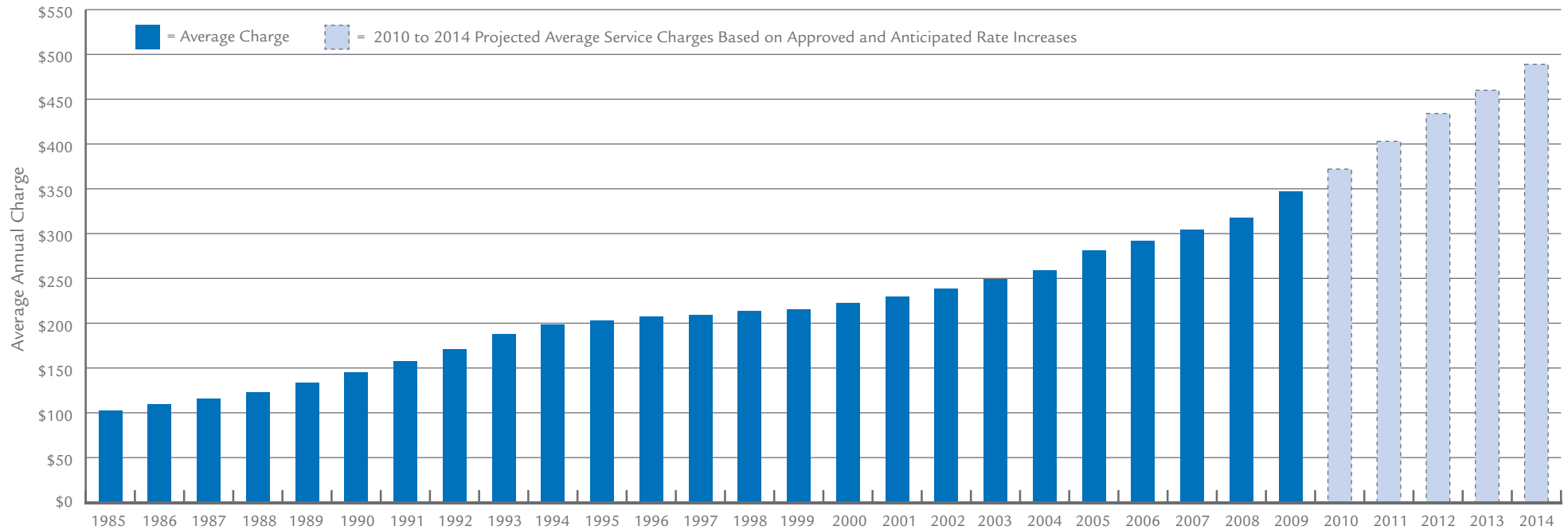
Note 1: The value of the annual Service Charge Index is based on all responses received. The base year, 1985 has been indexed to the value of 100.

Note 2: The annual percent change in the Index (national and regional) is based on the responses of those agencies that responded in both the previous year and current year using the same calculation method.

Additional information on the NACWA Index, past year's surveys, and regional summaries of the data from the 2009 NACWA Index are available on NACWA's website at www.nacwa.org/utilitymanagement



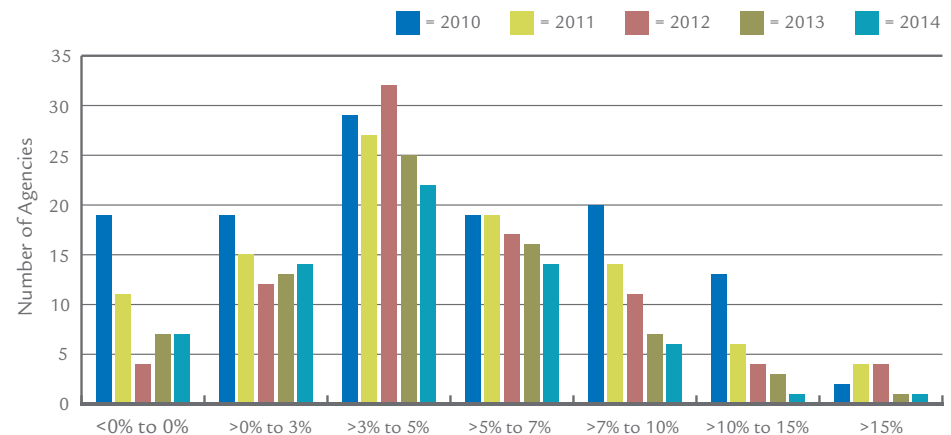
Average Annual Sewer Service Charge



Projected Rate Increases 2010-2014

	2010	2011	2012	2013	2014
Average Annual Increase (%)	7.5%	8.1%	7.7%	6.2%	6.1%
Average Service Charge (Projected \$)	372.94	403.06	434.07	460.95	489.23
Change from Previous Year (\$)	26.04	30.12	31.01	26.88	28.29
# of Total Responses	152	150	146	147	147
# of Responses with Numeric Estimates	102	85	80	65	58
Approved	46%	15%	10%	7%	5%
Planned	33%	53%	58%	50%	48%
No Change	13%	7%	3%	5%	5%
Uncertain	9%	25%	29%	38%	42%

Distribution of Projected 2010-2014 Rate Increases



Note 3: All agencies in the <0% to 0% category reported no change in rates (0%).

Note 4: Agencies indicating planned or expected future rate changes, but providing no numeric estimates, are not shown in the distribution above.