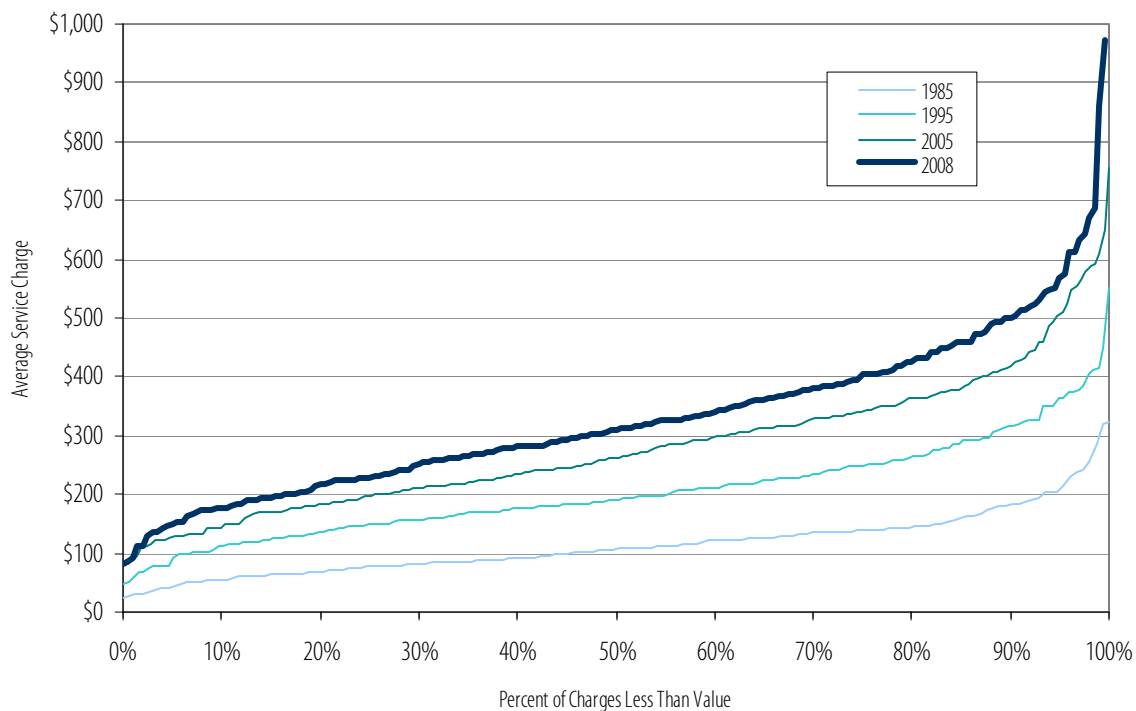


## Average Annual Sewer Service Charge by EPA Region (1985-2008)

Year	Region 1	Region 2	Region 3	Region 4	Region 5	Region 6	Region 7	Region 8	Region 9	Region 10	National
1985	\$71.74	\$87.74	\$124.46	\$142.85	\$141.32	\$108.90	\$65.12	\$104.57	\$64.87	\$118.54	\$102.75
1986	\$82.23	\$92.07	\$140.97	\$147.95	\$145.19	\$124.77	\$70.12	\$104.70	\$69.87	\$128.23	\$109.69
1987	\$100.65	\$103.02	\$142.94	\$156.86	\$140.29	\$146.30	\$72.68	\$104.95	\$75.39	\$132.98	\$115.51
1988	\$109.09	\$113.10	\$146.69	\$152.13	\$143.33	\$159.47	\$74.20	\$111.79	\$87.50	\$142.84	\$123.17
1989	\$146.94	\$130.73	\$155.64	\$159.89	\$144.18	\$168.07	\$76.20	\$108.46	\$103.14	\$154.60	\$133.65
1990	\$171.31	\$151.08	\$158.54	\$167.91	\$149.25	\$180.86	\$75.60	\$118.51	\$117.91	\$162.91	\$144.84
1991	\$199.77	\$171.40	\$190.65	\$175.78	\$154.06	\$173.30	\$84.55	\$123.73	\$135.38	\$178.43	\$157.88
1992	\$224.52	\$200.66	\$192.20	\$183.28	\$162.39	\$175.65	\$95.38	\$129.22	\$151.63	\$198.31	\$171.33
1993	\$312.62	\$202.08	\$214.43	\$194.79	\$171.21	\$192.52	\$135.78	\$141.67	\$166.91	\$206.26	\$188.12
1994	\$314.46	\$228.65	\$219.33	\$209.38	\$178.02	\$196.97	\$145.44	\$139.99	\$177.98	\$231.06	\$198.68
1995	\$311.61	\$221.16	\$219.13	\$221.46	\$183.78	\$212.54	\$146.26	\$149.95	\$180.75	\$252.36	\$203.22
1996	\$329.39	\$212.09	\$228.72	\$230.37	\$185.35	\$217.93	\$148.84	\$147.90	\$188.26	\$265.79	\$207.28
1997	\$318.71	\$213.84	\$229.04	\$241.79	\$181.65	\$216.85	\$157.71	\$147.52	\$192.36	\$272.46	\$209.49
1998	\$323.37	\$220.48	\$234.95	\$240.56	\$182.65	\$214.37	\$164.92	\$149.30	\$202.00	\$280.25	\$213.52
1999	\$324.77	\$228.57	\$236.39	\$247.73	\$187.89	\$212.70	\$167.56	\$154.73	\$196.78	\$285.14	\$215.61
2000	\$321.19	\$228.20	\$243.75	\$258.41	\$191.88	\$218.11	\$168.41	\$155.33	\$207.56	\$305.72	\$222.31
2001	\$318.72	\$255.85	\$250.23	\$264.27	\$195.22	\$218.68	\$174.99	\$159.72	\$212.39	\$314.30	\$229.63
2002	\$325.60	\$276.08	\$249.55	\$268.74	\$207.32	\$225.66	\$180.12	\$158.41	\$220.99	\$348.21	\$238.95
2003	\$346.87	\$286.70	\$244.16	\$311.31	\$220.11	\$228.64	\$171.49	\$152.46	\$220.01	\$375.13	\$249.44
2004	\$374.54	\$288.61	\$254.62	\$300.02	\$218.55	\$264.95	\$184.68	\$175.91	\$235.86	\$387.05	\$258.96
2005	\$434.72	\$321.74	\$283.49	\$332.32	\$233.81	\$266.10	\$205.16	\$172.02	\$248.99	\$424.45	\$281.23
2006	\$450.31	\$337.77	\$302.78	\$318.03	\$255.70	\$286.47	\$237.39	\$174.16	\$267.88	\$362.59	\$291.89
2007	\$521.61	\$351.17	\$325.68	\$347.20	\$261.14	\$259.19	\$235.62	\$179.91	\$279.37	\$383.94	\$304.47
2008	\$577.12	\$375.19	\$367.86	\$326.74	\$278.44	\$273.67	\$246.81	\$179.90	\$316.16	\$349.81	\$313.60
# of Responses (2008)	8	12	20	38	34	16	12	9	31	17	197
Population (2008)	3,272,371	12,694,246	12,602,919	12,505,490	18,581,167	11,723,601	4,820,723	2,650,324	25,146,919	4,931,605	108,929,365

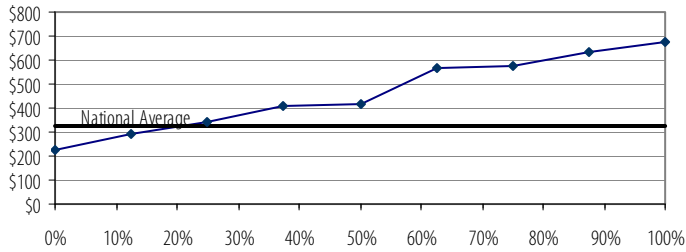
**Note 1:** The value of the Service Charge Index is based on all responses received. The base year, 1985 has been indexed to a value of 100 at the national level.

## Distribution Trend of Average Sewer Service Charge (National)

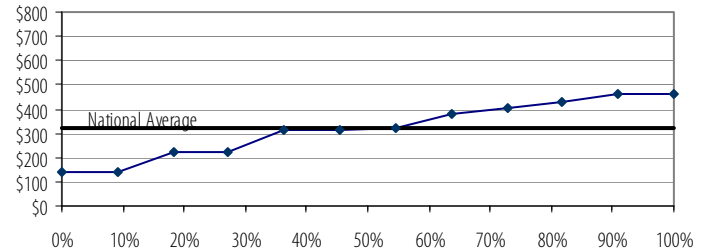


## Regional Distribution of Service Charges (2008) (Charge vs. Percent of Charges Less Than Value)

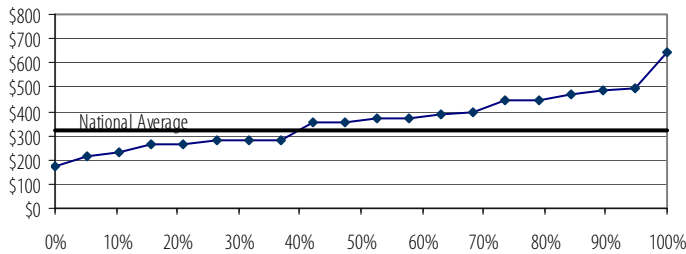
EPA Region 1



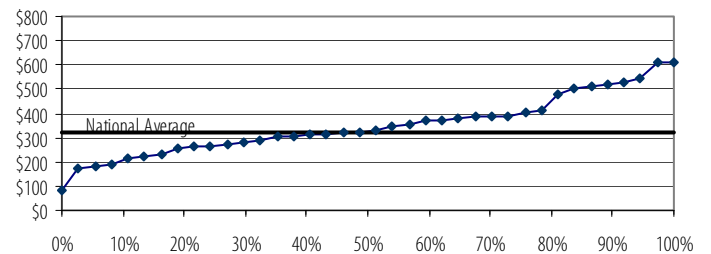
EPA Region 2



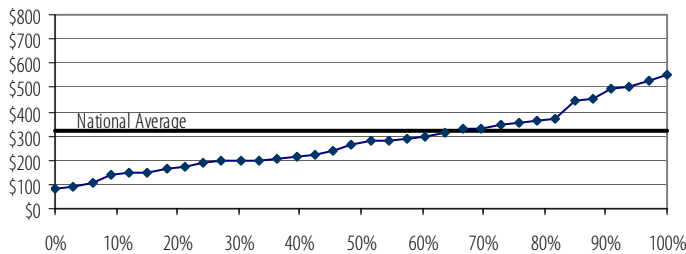
EPA Region 3



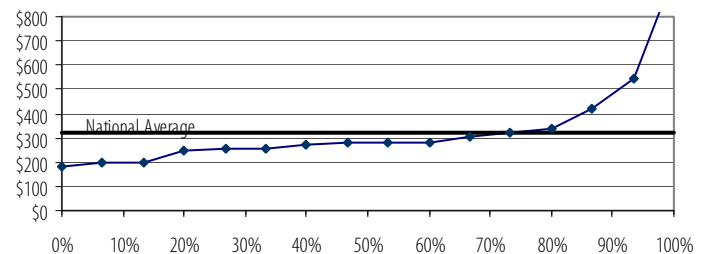
EPA Region 4



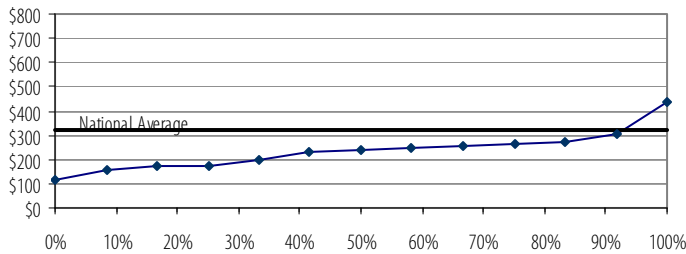
EPA Region 5



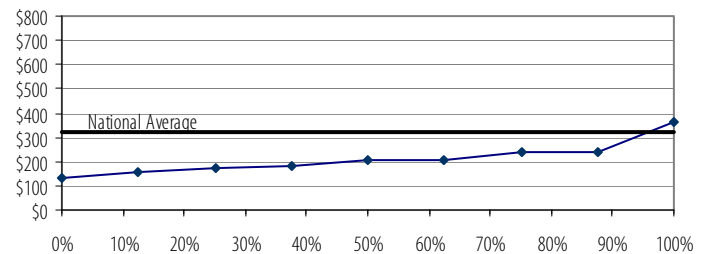
EPA Region 6



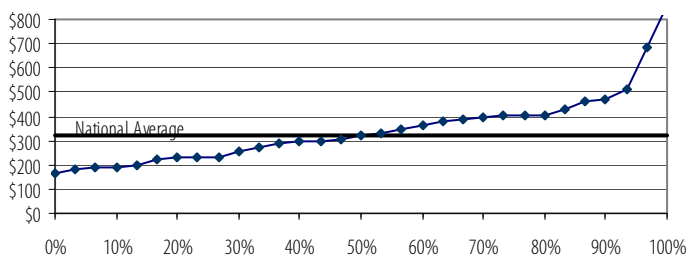
EPA Region 7



EPA Region 8



EPA Region 9



EPA Region 10

