

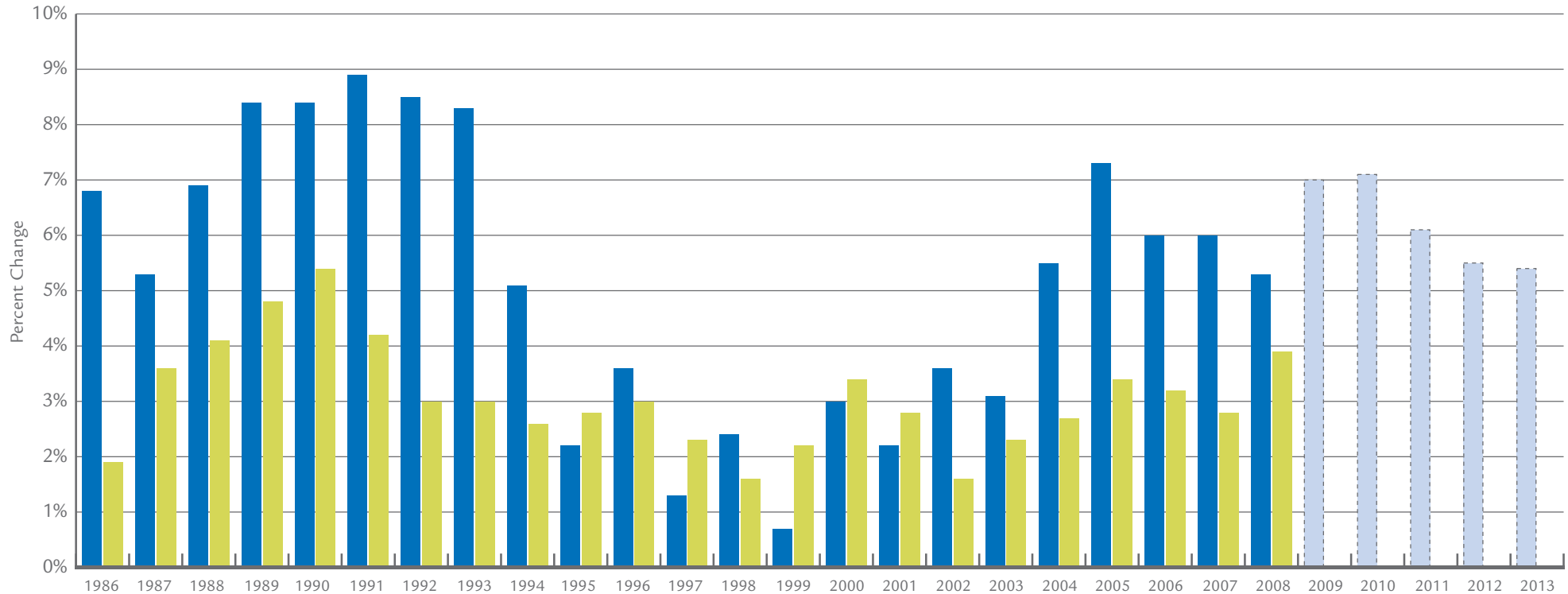


## Service Charge Index vs. Inflation

■ = NACWA Index

■ = Consumer Price Index

■ = 2009 to 2013 Projected Service Charge Changes  
Based on Approved and Anticipated Rate Increases



	1985	1986	1987	1988	1989	1990	1991	1992	1993	1994	1995	1996	1997	1998	1999	2000	2001	2002	2003	2004	2005	2006	2007	2008
NACWA Index	100.0	106.8	112.4	119.9	130.1	141.0	153.7	166.7	183.1	193.4	197.8	201.7	203.9	207.8	209.8	216.4	223.5	232.6	242.8	252.0	273.7	284.1	296.3	313.6
Change from Previous Year		6.8%	5.3%	6.9%	8.4%	8.4%	8.9%	8.5%	8.3%	5.1%	2.2%	3.6%	1.3%	2.4%	0.7%	3.0%	2.2%	3.6%	3.1%	5.5%	7.3%	6.0%	6.0%	5.3%
Average Service Charge (\$)	102.75	109.69	115.51	123.17	133.65	144.84	157.88	171.33	188.12	198.68	203.22	207.28	209.49	213.52	215.61	222.31	229.63	238.95	249.44	258.96	281.23	291.89	304.47	322.21
Change from Previous Year (\$)		6.95	5.82	7.99	10.35	11.25	12.84	13.84	13.78	10.32	4.23	6.44	2.88	4.89	1.90	6.41	4.47	8.45	7.69	13.46	18.64	16.98	16.38	18.02
Change to Consumer Price Index		1.9%	3.6%	4.1%	4.8%	5.4%	4.2%	3.0%	3.0%	2.6%	2.8%	3.0%	2.3%	1.6%	2.2%	3.4%	2.8%	1.6%	2.3%	2.7%	3.4%	3.2%	2.8%	3.9%
Total Responses	155	158	157	163	166	169	171	175	184	194	199	205	208	214	224	234	238	221	233	223	213	203	196	197
Total Responses in Both Previous and Current Year		155	157	157	163	166	169	171	170	182	189	195	202	204	210	218	227	215	198	200	188	177	173	163

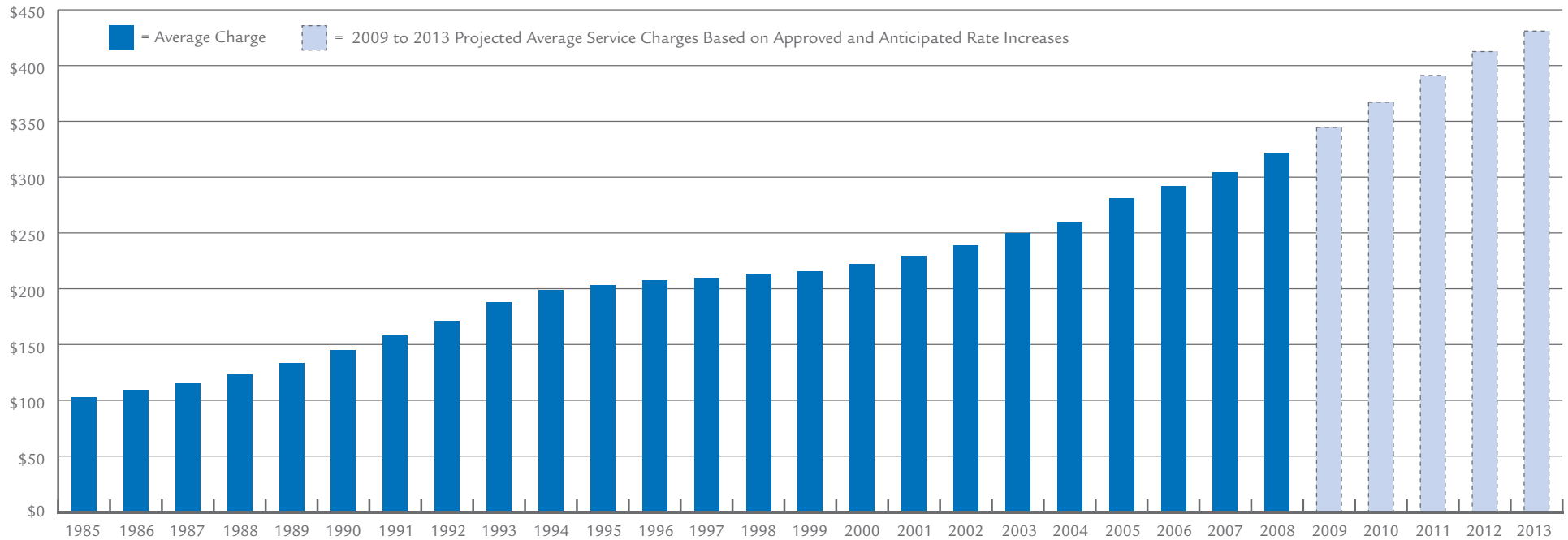
**Note 1:** The value of the annual Service Charge Index is based on all responses received. The base year, 1985 has been indexed to the value of 100.

**Note 2:** The annual percent change in the Index (national and regional) is based on the responses of those agencies that responded in both the previous year and current year using the same calculation method.

Additional information on the NACWA Index, past year's surveys, and regional summaries of the data from the 2008 NACWA Index are available on NACWA's website at [www.nacwa.org/utilitymanagement](http://www.nacwa.org/utilitymanagement)



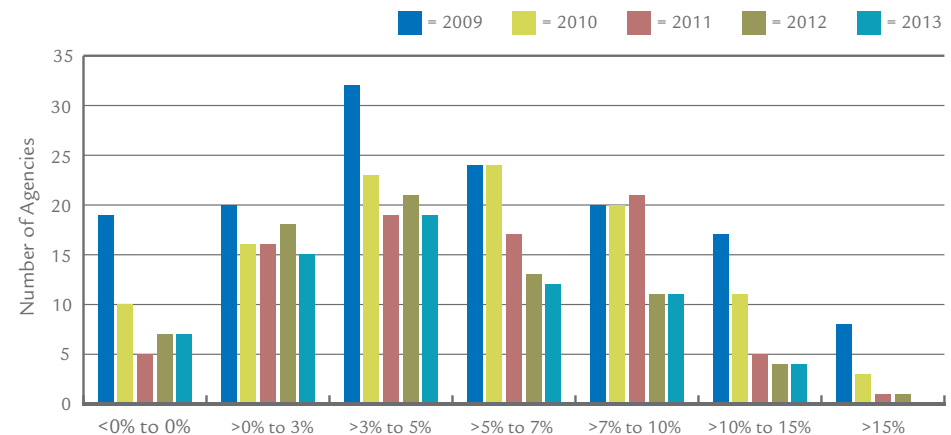
## Average Annual Sewer Service Charge 1985-2008



## Projected Rate Increases 2009-2013

	2009	2010	2011	2012	2013
Average Annual Increase (%)	7.0%	7.1%	6.1%	5.5%	5.4%
Average Service Charge (Projected \$)	344.54	367.12	391.14	412.55	430.93
Change from Previous Year (\$)	22.33	22.58	24.02	21.41	18.38
# of Total Responses	180	174	162	159	155
# of Responses with Numeric Estimates	122	96	76	65	58
Approved	50%	22%	13%	10%	8%
Planned	29%	49%	50%	50%	49%
No Change	10%	5%	2%	4%	4%
Uncertain	11%	24%	35%	36%	39%

## Distribution of Projected 2009-2013 Rate Increases



**Note 3:** All agencies in the <0% to 0% category reported no change in rates (0%).

**Note 4:** Agencies indicating planned or expected future rate changes, but providing no numeric estimates, are not shown in distribution above.