

# FOG Programs – Can You See The Light?

James Baginski, P.E.

# Main Project Goals

## Database Modernization

(Legacy DOS Database → Modern SQL Server)

- More Stable Infrastructure
- Capable of Processing More Records
- Modern – web-enabled Interface
- Improved Reporting and Analytical Capabilities

## Inspector Empowerment

(Mobile Data Collection)

- Eliminate Multiple Data Entry
- Minimize Data Entry Errors
- Frees Inspectors to do Higher Value Work

## Workflow Efficiency

(Grease Hauler Bar-Coding Program)

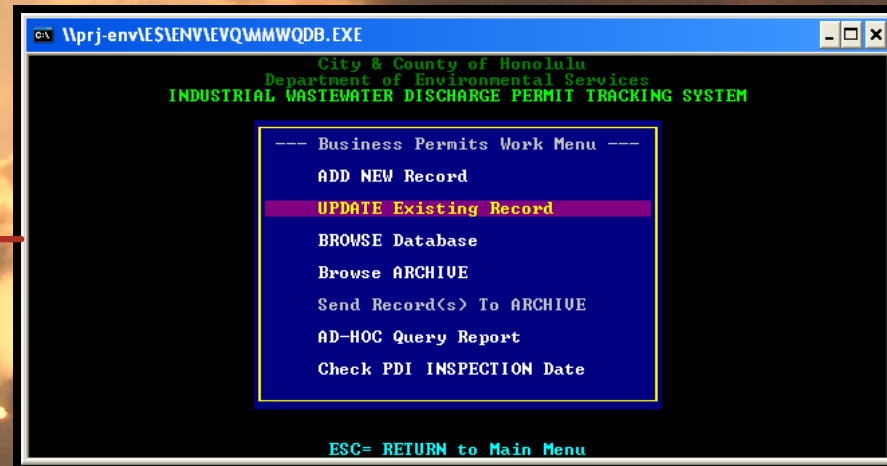
- Minimize or Eliminate Investigator Site Inspections
- Provide Data to Identify Violations



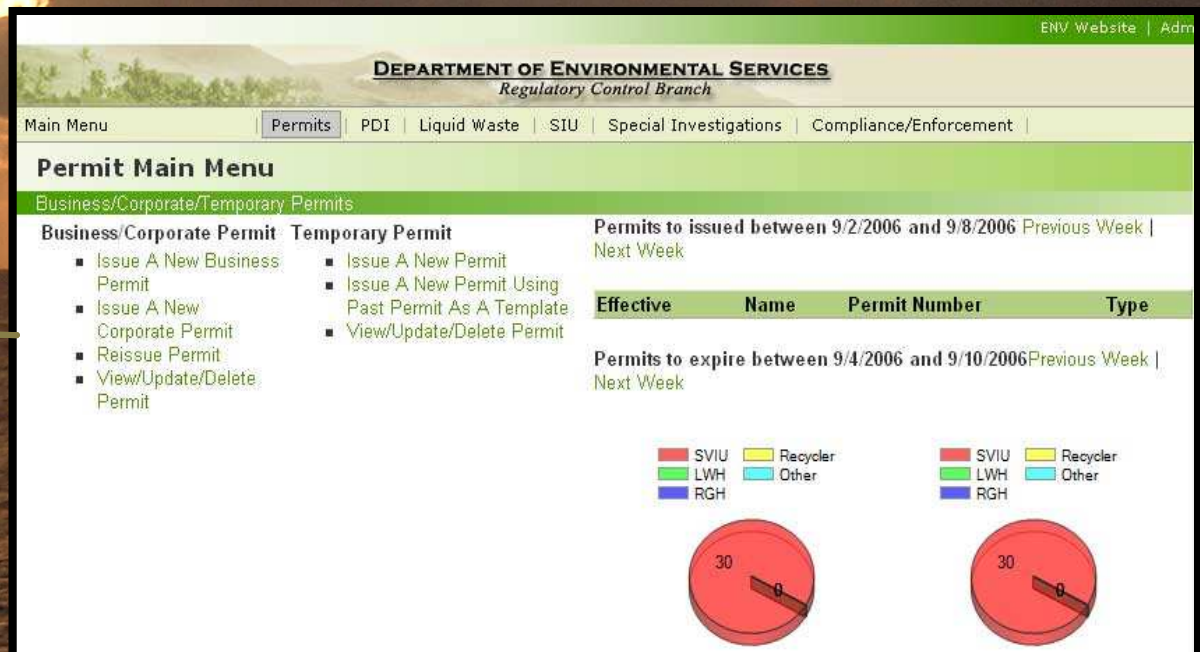
# Initiative 1 –Database Modernization

## DOS Database to SQL Server Migration

**Before**  
Permit Tracking  
Main Page



**After**  
Permit Tracking  
Main Page



# Optimizing Workflow

## Migration from DOS Database to SQL Server – After Project

**Before**  
Permit Tracking  
Data Entry

City & County of Honolulu  
Department of Environmental Services  
**BROWSE BUSINESS INDUSTRIAL WASTEWATER DISCHARGE PERMIT DATABASE**  
(last modified by Steve Lum on 01/24/2001)

Name: **DAIEI** Status: **R** Type: Insp: **No**

St Nbr: **345** Name: **HAHANI ST** Contact: **NEAL ARISUMI**

Unit: Zip: **96734** City: **KAILUA** Ph: **9736638** TMK: **4-2-001:044**

SICs= **5812,5399** IU Code: **SUIU** NIU Code: Comp Sched: **/ /**

Devices= **5** Indust: **4579** Sani: **2629** GIP: **10/11/2001** Gr Int:

Survey Out: **11/06/2000** In:

EQ Log #: **01-0016** Permit

Login: **01/04/2001** Effect:

Shift-F1= Print F3= Mail  
F7= Comments F8= Insy

Up/Down ARROWS

**After**  
Permit Tracking  
Data Entry

**DEPARTMENT OF ENVIRONMENTAL SERVICES**  
Regulatory Control Branch

Main Menu | Permits | **PDI** | Liquid Waste | SIU | Special Investigations | Compliance/Enforcement

### PDI Inspection

Enter the PDI Inspection Details. Select a Device or Fixture to Enter the Individual Device/Fixture Inspection Details.

7-ELEVEN SAVE 1221 PIKIOI ST  
Permit Number: HONOLULU, HI 96814

Back | Print Inspection Summary

#### PDI Inspection # 59655

Inspection Date:

Revisit:

Inspector:

Action Taken:

Site Rating:

Suspense Days:  days

Suspense Date:

Date Corrected:

Documents Issued At Site: ☐ GIP ☐ BMP ☐ SCP

Comments:



# Initiative 2 – Inspector Empowerment

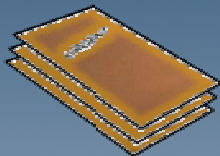
Improve Data Collection Using Mobile Solutions

## FIELD TECH REQUIREMENTS

### DATA COLLECTION



### REFERENCE INFORMATION



### HISTORICAL DATA ACCESS

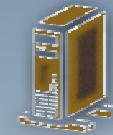


## CONNECT BACK TO ANY DATA

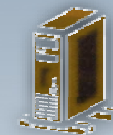
### Legacy Databases



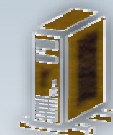
### Scheduling



### Database Apps (i.e. Synergis DocuShare)



### Software Apps (i.e. GIS, etc)



# What is Mobile Computing?

## Definition:

Ability to use technology 'un-tethered' and away from the normal fixed workplace.

## Types of Mobile Computers

- Laptops
- Personal Digital Assistants (PDA)
- Tablet Computer
- Smart-phones





# Mobile Computing?

## Why Care?

- 40% of the U.S. workforce today is mobile.<sup>1</sup>
- By 2009 approximately one-quarter of the global workforce will be mobile.<sup>2</sup>



<sup>1</sup> Securing the Anywhere Enterprise, Yankee Group, December 2006

<sup>2</sup> Worldwide Mobile Worker Population Forecast and Analysis, IDC, October 2006

# Tangible Benefits of Mobile Data Collection

- Companies Using Mobile Data Collection are More Efficient
  - ✓ Meet 22% more sales targets
  - ✓ Resolve problems 21% faster
  - ✓ Increase revenues by 18% <sup>1</sup>
- Return on Investment (ROI)
  - ✓ Average field worker saves 60 minutes each day by using wireless mobile devices
  - ✓ Savings of about \$11,000 per mobile user per year <sup>2</sup>



<sup>1</sup> Mobile Field Service Update: 2007 and Beyond, Aberdeen Group, January 2007.

<sup>2</sup> 2005 Mobile User Survey, Frost & Sullivan



# Intangible Benefits of Mobile Data Collection

- Enhanced decision-making:  
access to more online resources in the field.
- Improved Customer Service:  
Quicker execution with Clients, etc.
- Minimize error
  - Elimination of data transcription errors
  - Data validation (pull-downs, check boxes, etc.)
- Free up time to do other things

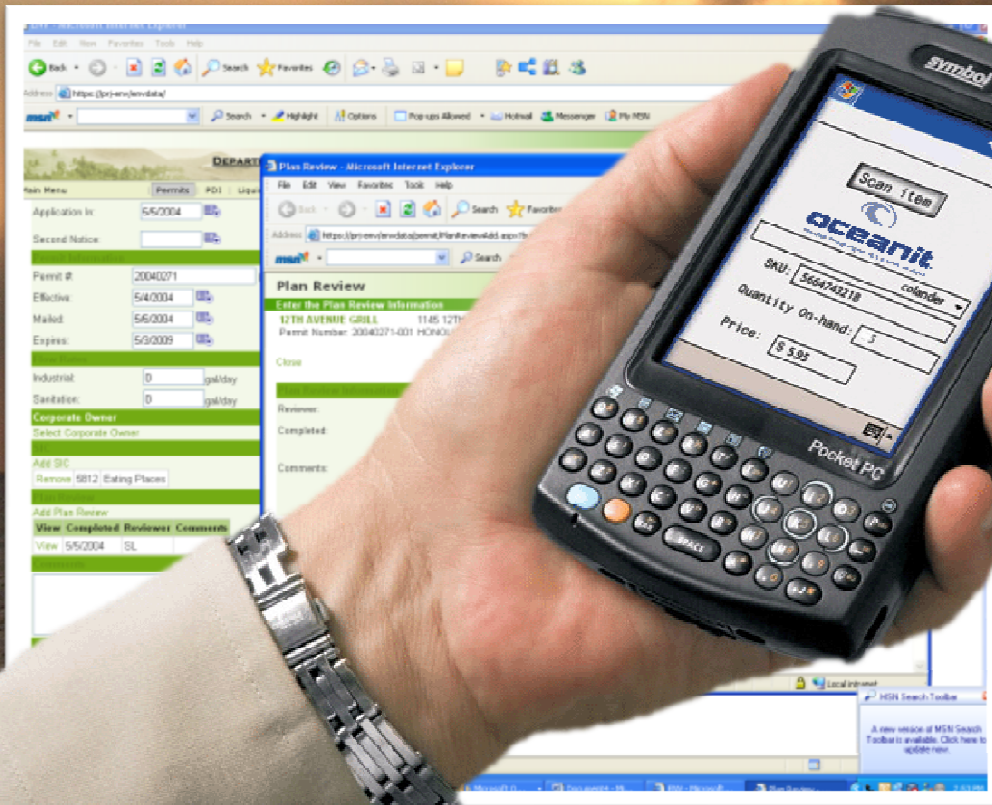
EMPOWERING  
BENEFITS



# Data Acquisition: Environmental Monitoring

Field Mobilization

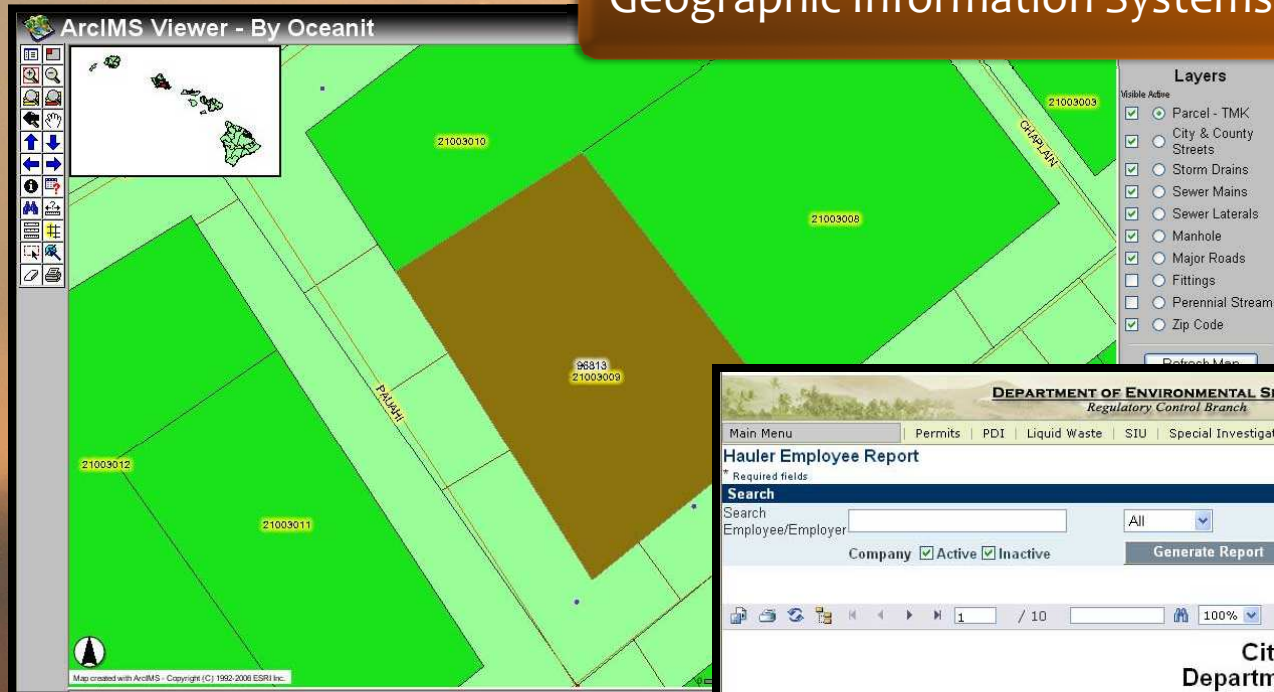
Data Capture & Web-Interface





# Improving Analytical Capabilities

## Geographic Information Systems



## Custom Reports

DEPARTMENT OF ENVIRONMENTAL SERVICES  
Regulatory Control Branch

Main Menu | Permits | PDI | Liquid Waste | SIU | Special Investigations | Compliance/Enforcement

### Hauler Employee Report

\* Required fields

Search  
Employee/Employer:  All

Company ☒ Active ☒ Inactive [back](#)

1 / 10 100%

### City and County of Honolulu Department of Environmental Services Environmental Quality Division

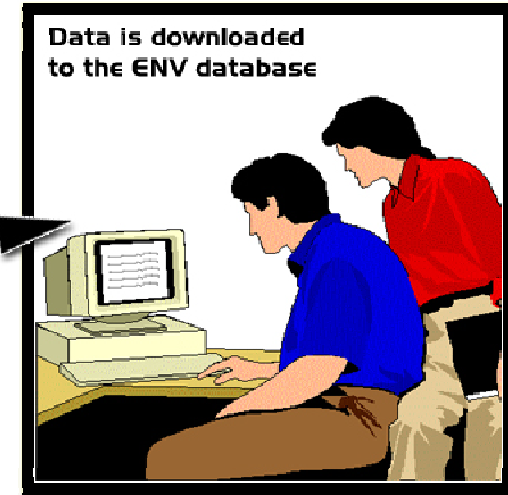
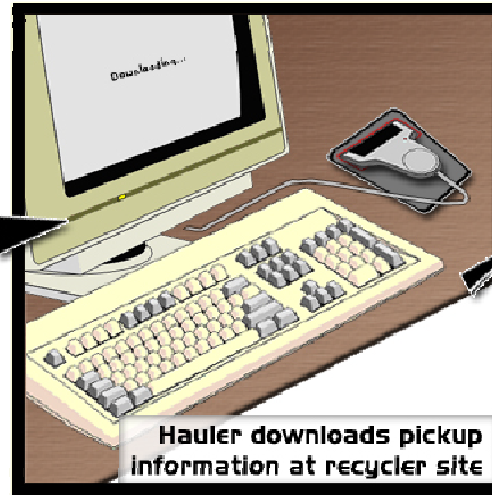
#### LWH Employee Report

Search for:

Company Name	Employee ID	Lastname	Firstname	Co Active	Emp Active
UNITEK SOLVENT SERVICES INC (LWH)	1	Manipon	Byron	Yes	Yes
		Employee Count =	1		
CHEMI-TOI (LWH)	30	Kawelo	Erdman	Yes	Yes
		Employee Count =	1		
PACIFIC ENVIRONMENTAL CORP (LWH)	33	Souza	Justin	Yes	Yes
		Employee Count =	1		
COASTLINE SERVICES (LWH)	35	NIHIPALI	JOE	Yes	Yes
		Employee Count =	1		

# Initiative 3 – Workflow Efficiency

## Grease Hauler Bar-coding







# The Ring of Enforcement

(Full Circle Tracking System)

- Trap Location ID Scanned
- Timestamp Stored

**HAULER**



**REPORTING**

- Automated Violations
- Enforcement



**RECYCLER**

- Hauler Identified
- Quantity Captured



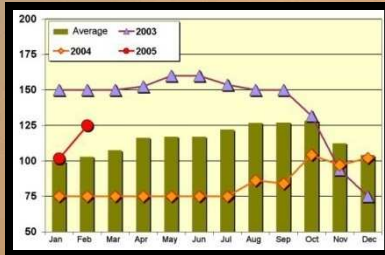
**CITY ENVIRONMENTAL SVC**

- Encrypted Data Transmission
- Database Confirmation





# New Concepts (Future Phases)



## ONLINE RECONCILING

- Client, Hauler, Recycler Trends & Reports

## REPORTING

- Automated Violations
- Enforcement

## E-ENFORCEMENT

- Automatic Notices
- Tiered Distribution

## CITY ENVIRONMENTAL SV

- Encrypted Data Transmission
- Database Confirmation

## ENTER A TOPIC

- Enter a thought

## RECYCLER


- Hauler Identified
- Quantity Captured

## OFF-LOAD ID SYSTEM

- Optical Identification
- Safety Records



# Summary

- **New Database** provides a *more stable environment* to work in and build upon. Database purpose shifts from being a data gathering tool to a *data analysis tool*.
- **Mobile Data Collection** *saves time and minimizes error* allowing inspectors to *focus on higher value work* such as violations.
- **Bar-coding** will *save time* for haulers, ENV inspectors, and will provide invaluable data to help identify violators.
- Consultant:  ([www.oceanit.com](http://www.oceanit.com))





??QUESTIONS??

# Program Information

James Baginski, P.E.

Branch Head

1000 Uluohia Street, Suite 303

Kapolei, Hawaii 96707

Tel: (808) 768-3286

Email: [jbaginski@honolulu.gov](mailto:jbaginski@honolulu.gov)

Consultant:

Oceanit

[www.oceanit.com](http://www.oceanit.com)

David Takeyama

IT Solutions Manager

Tel: (808) 531-3017

Email: [dtakeyama@oceanit.com](mailto:dtakeyama@oceanit.com)

