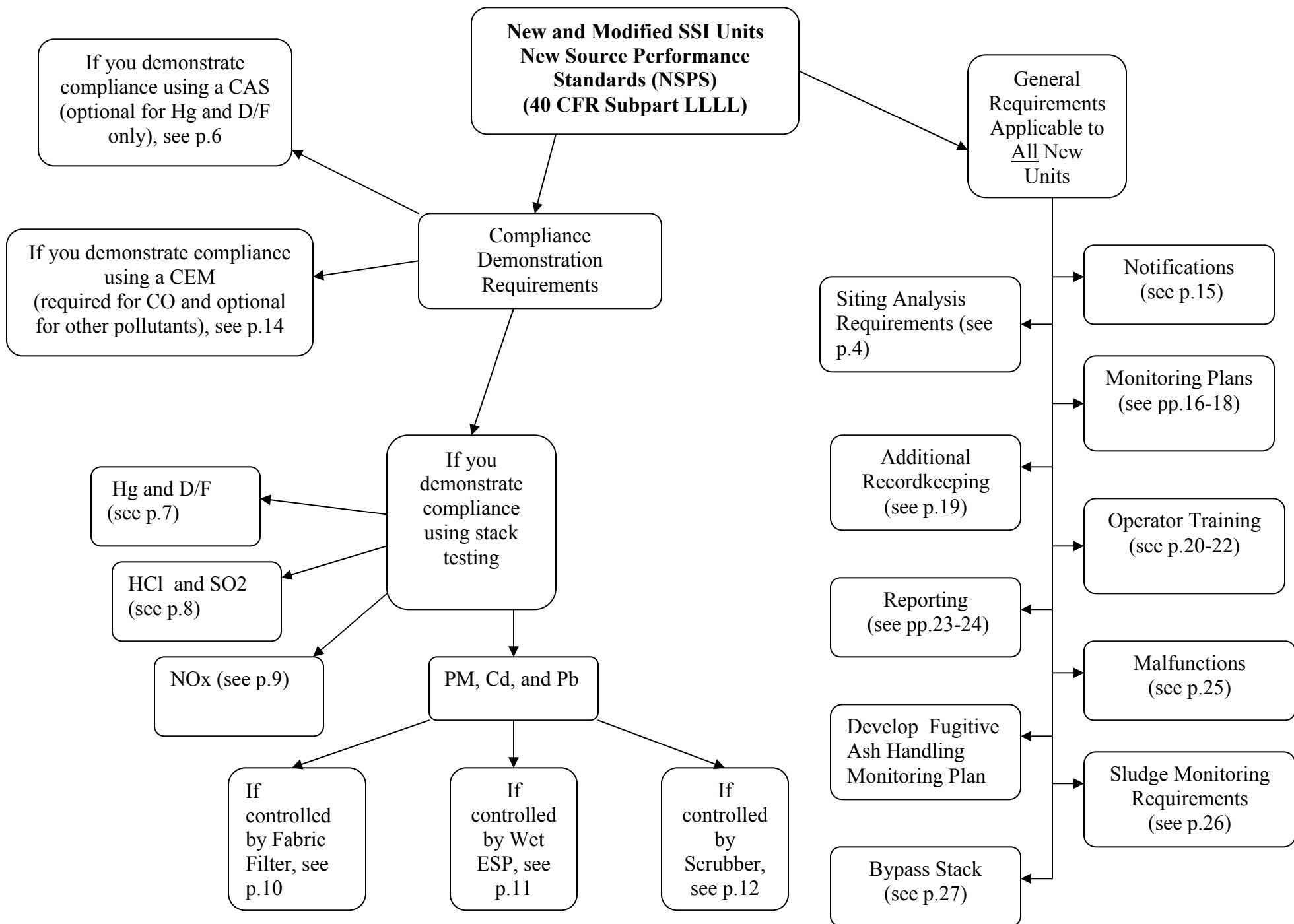
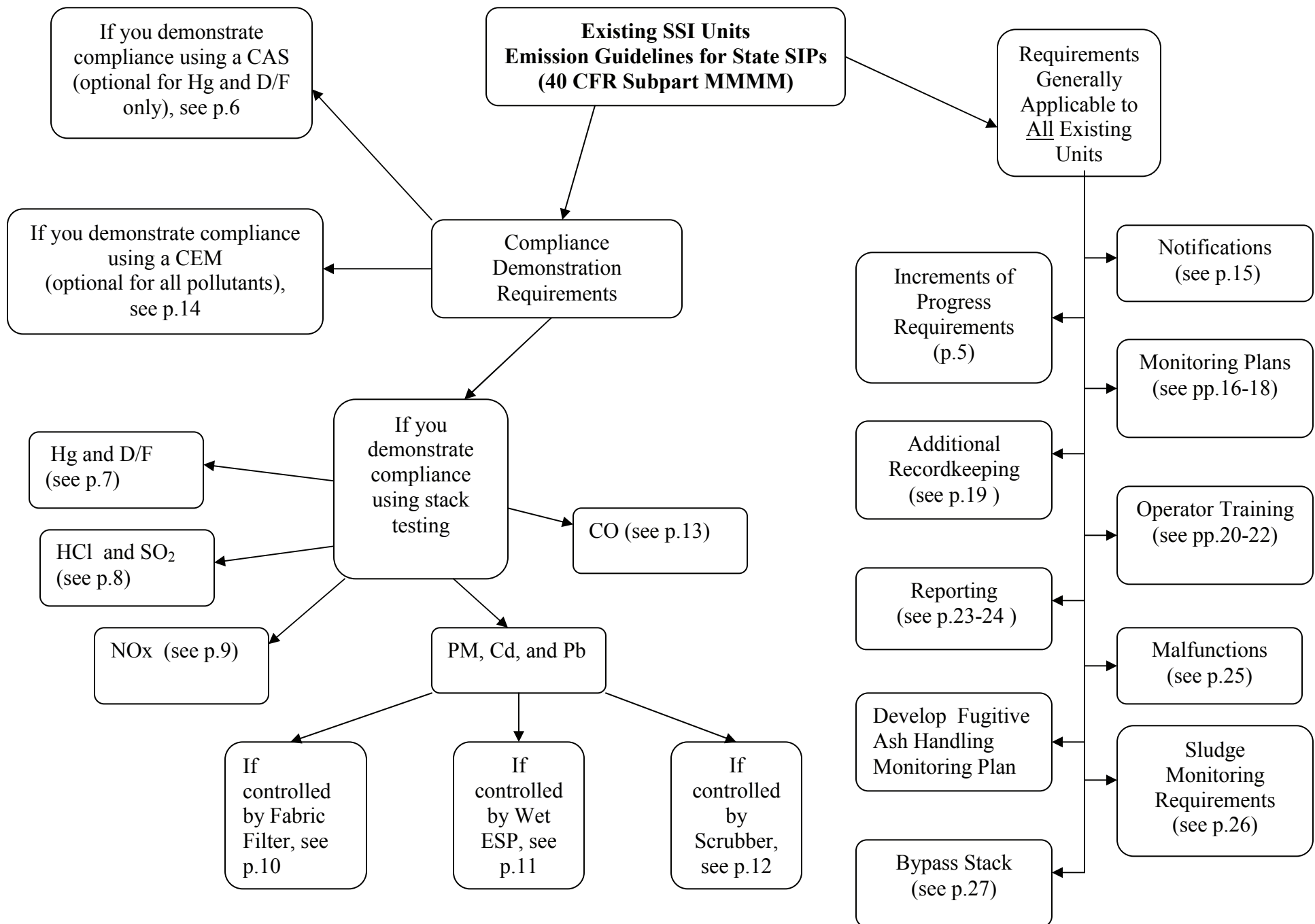
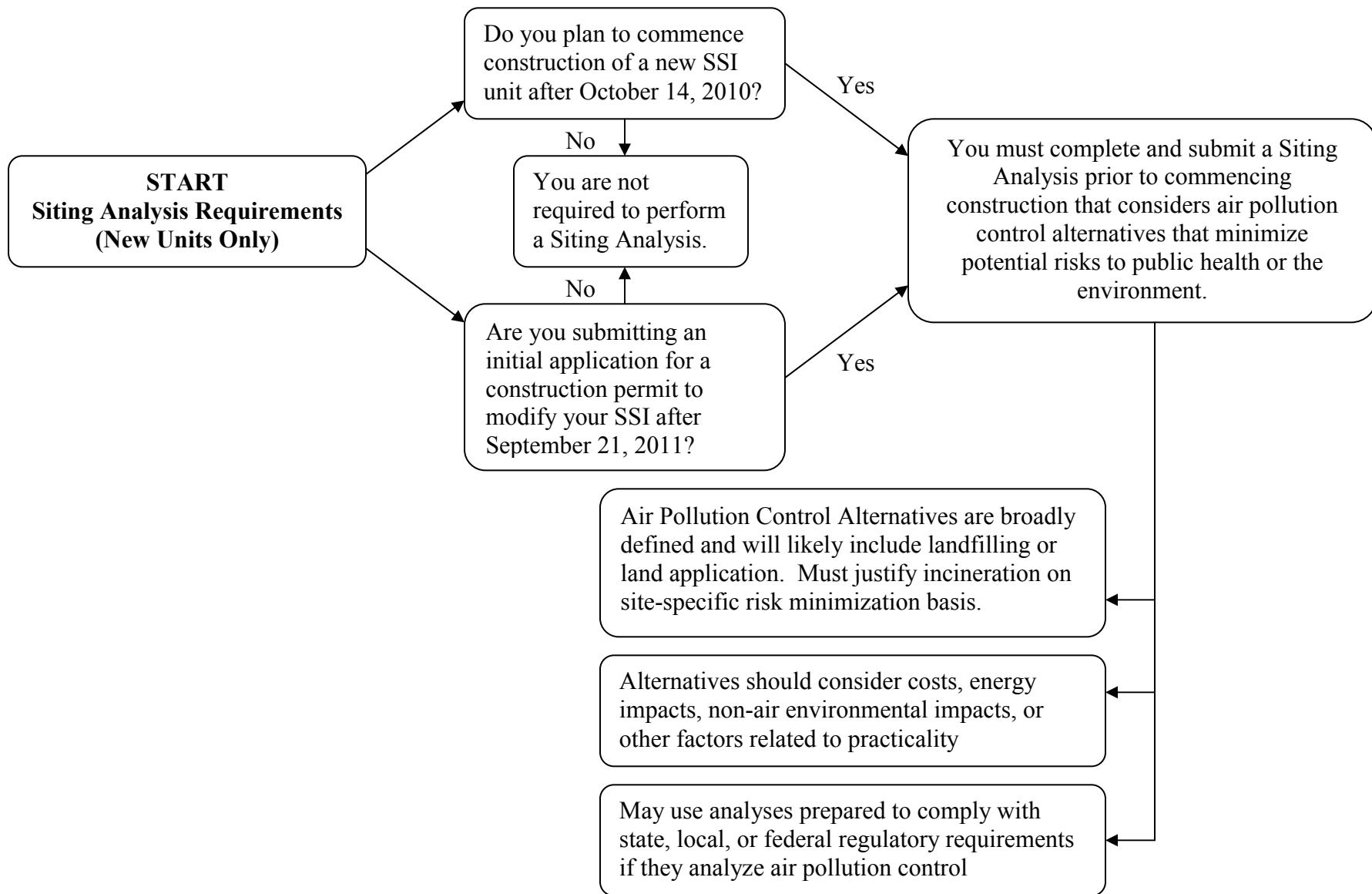
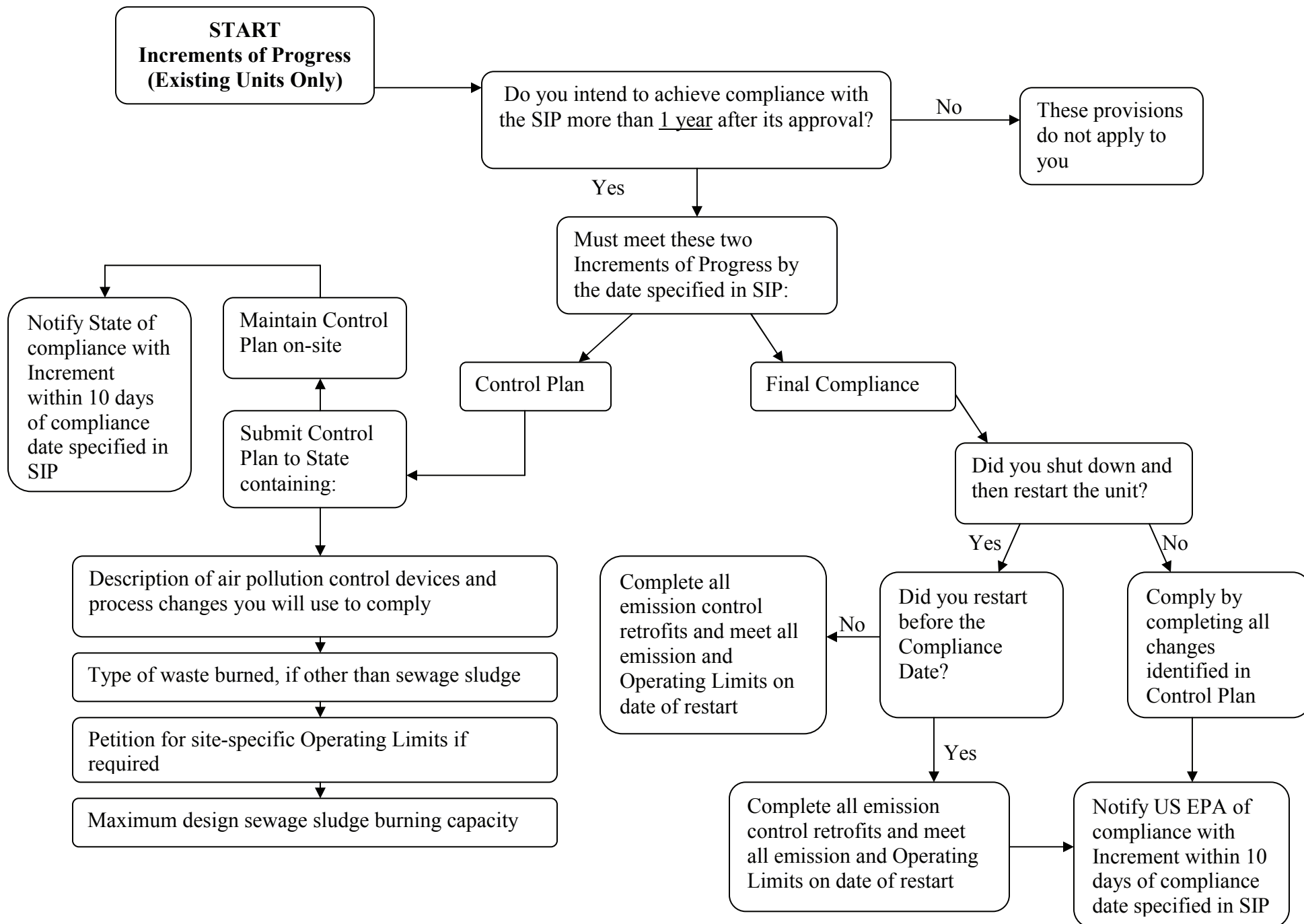


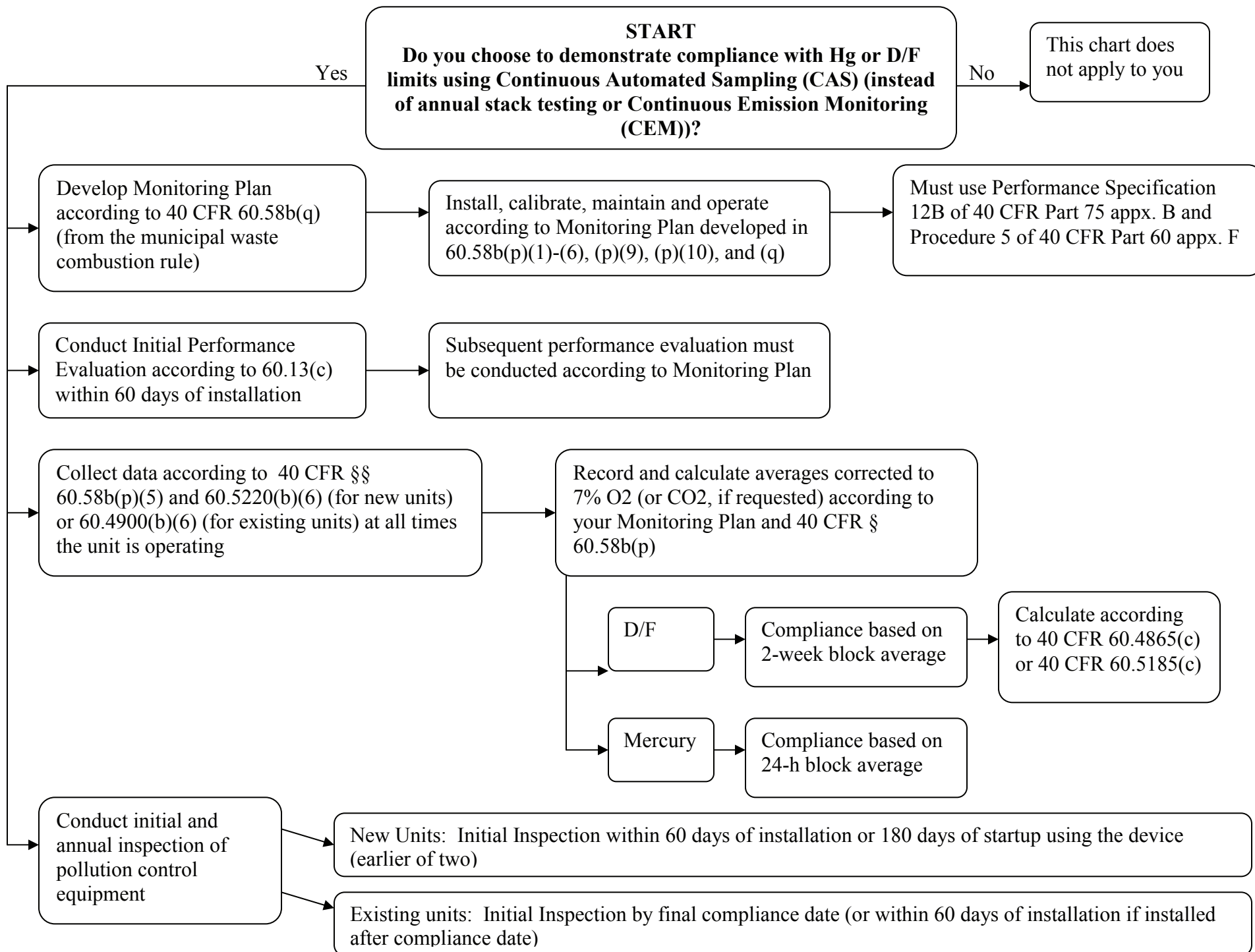
\*See attached NACWA memorandum for how to determine whether your unit is “new” or “modified”

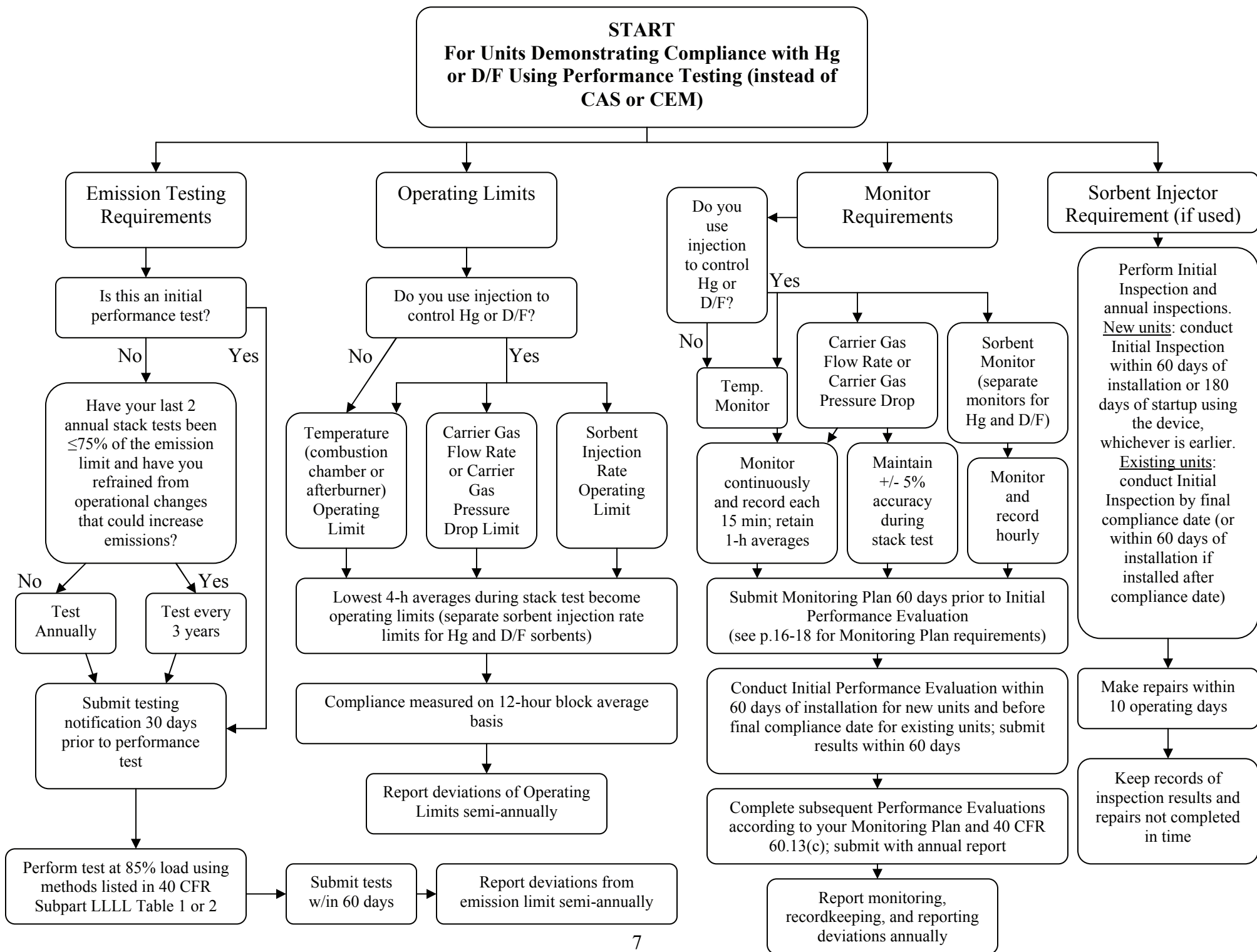


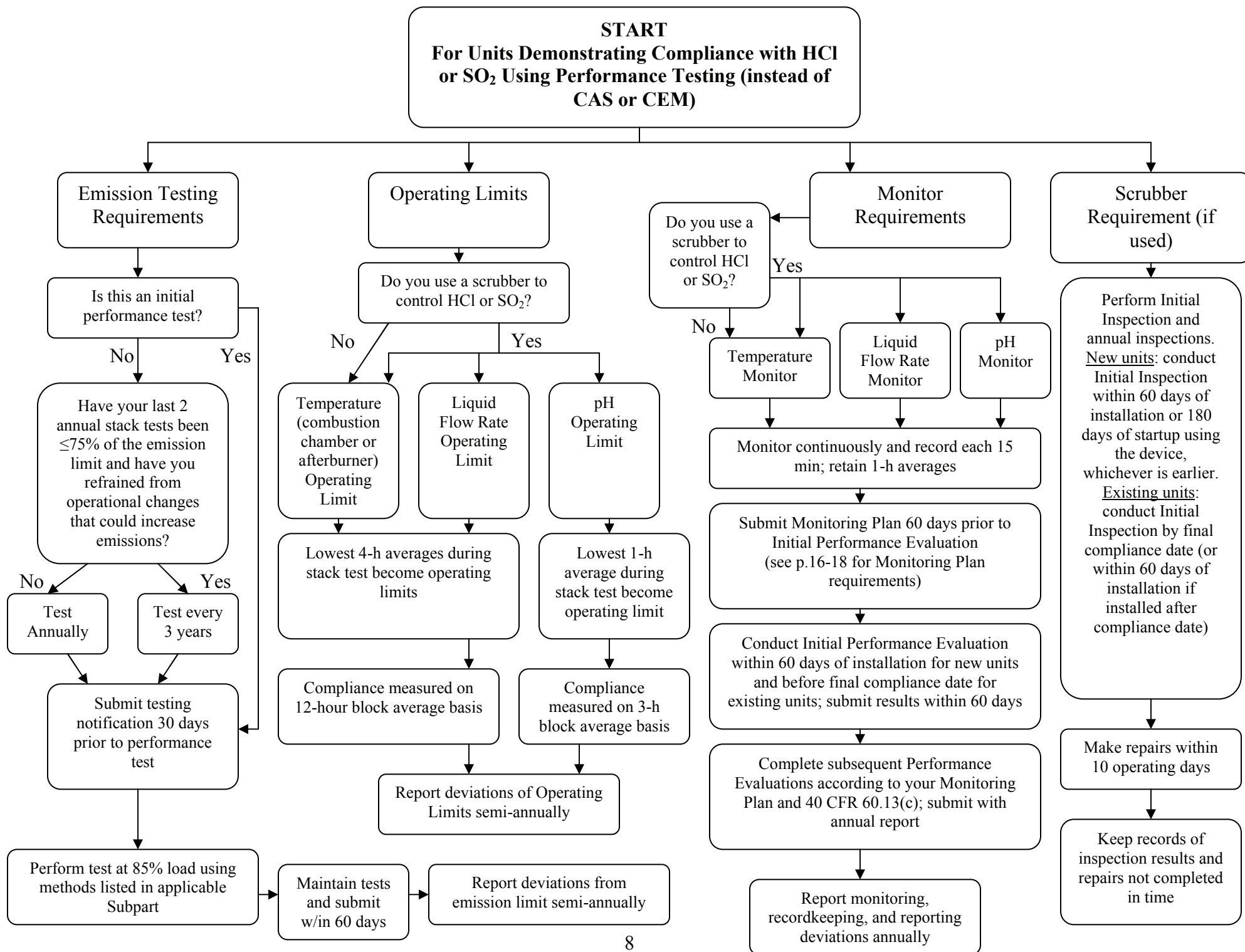




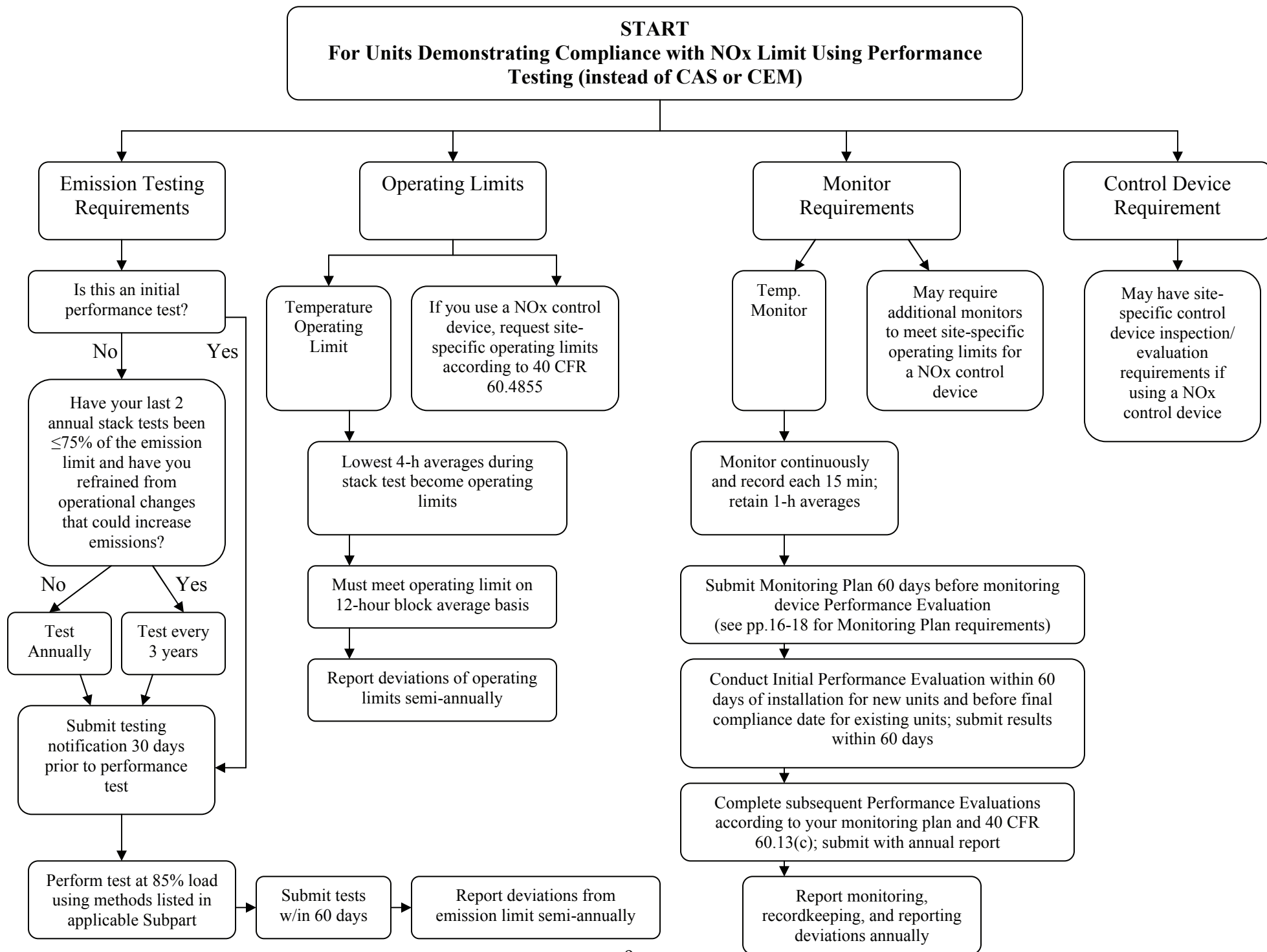


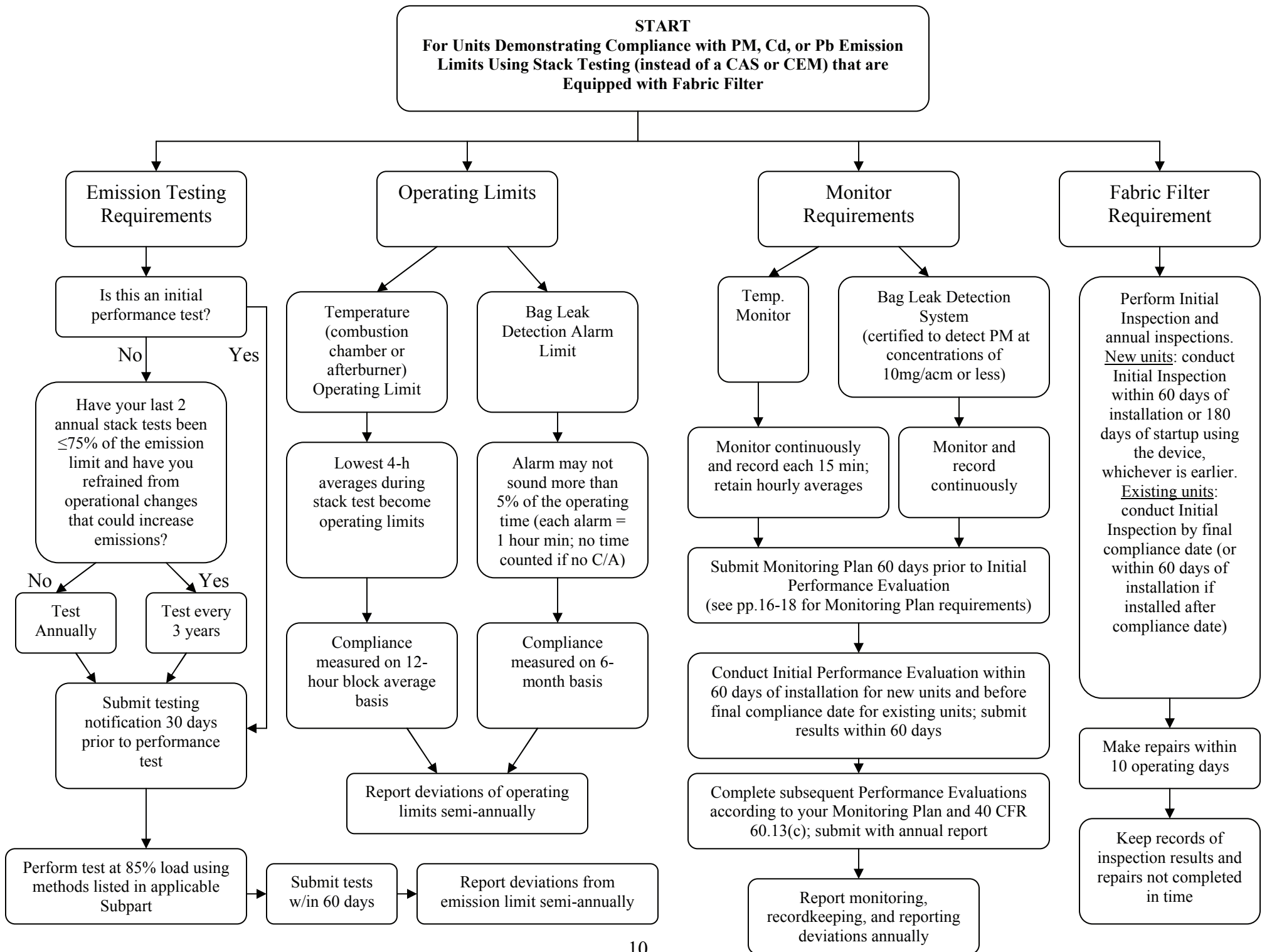


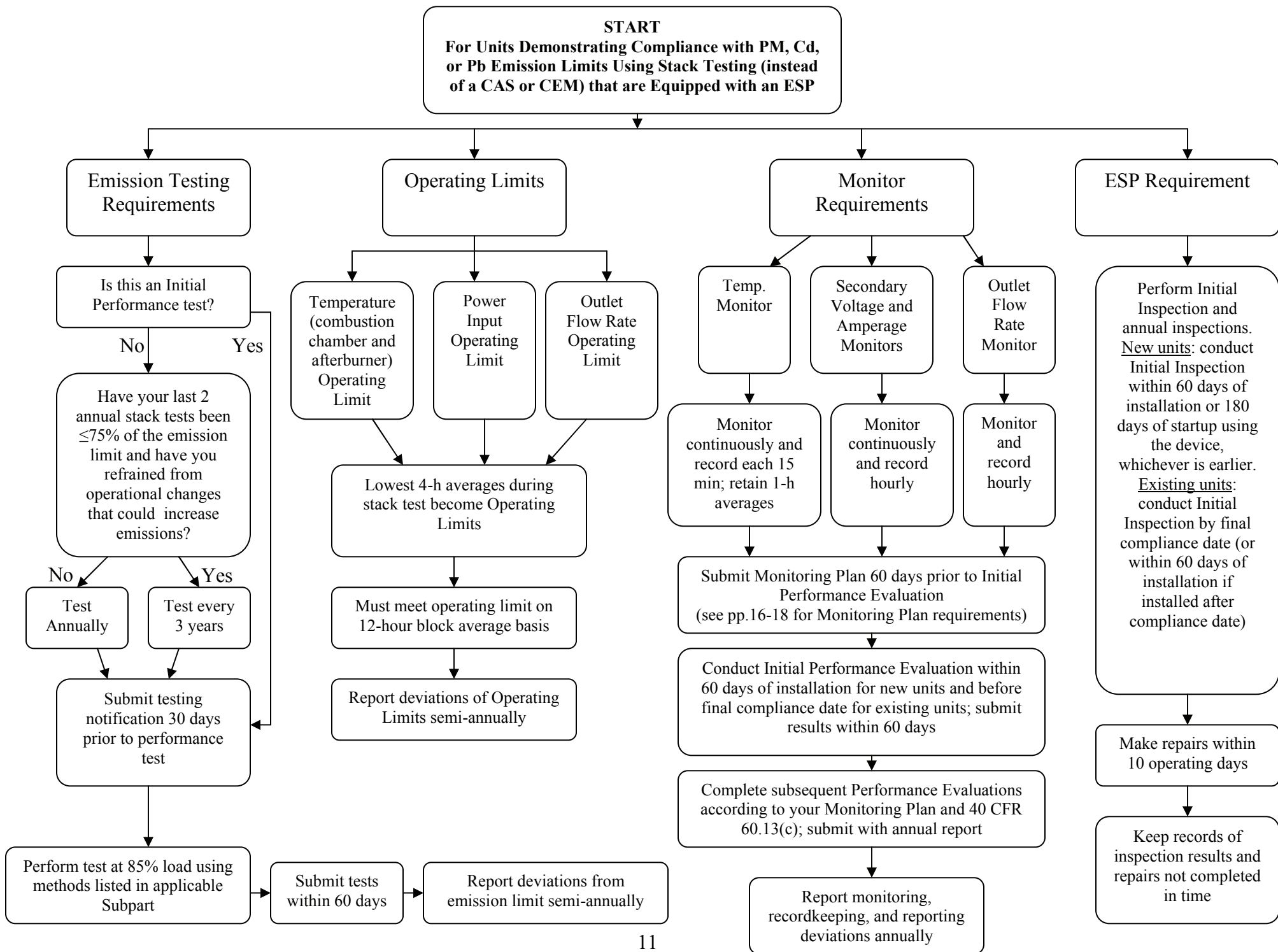


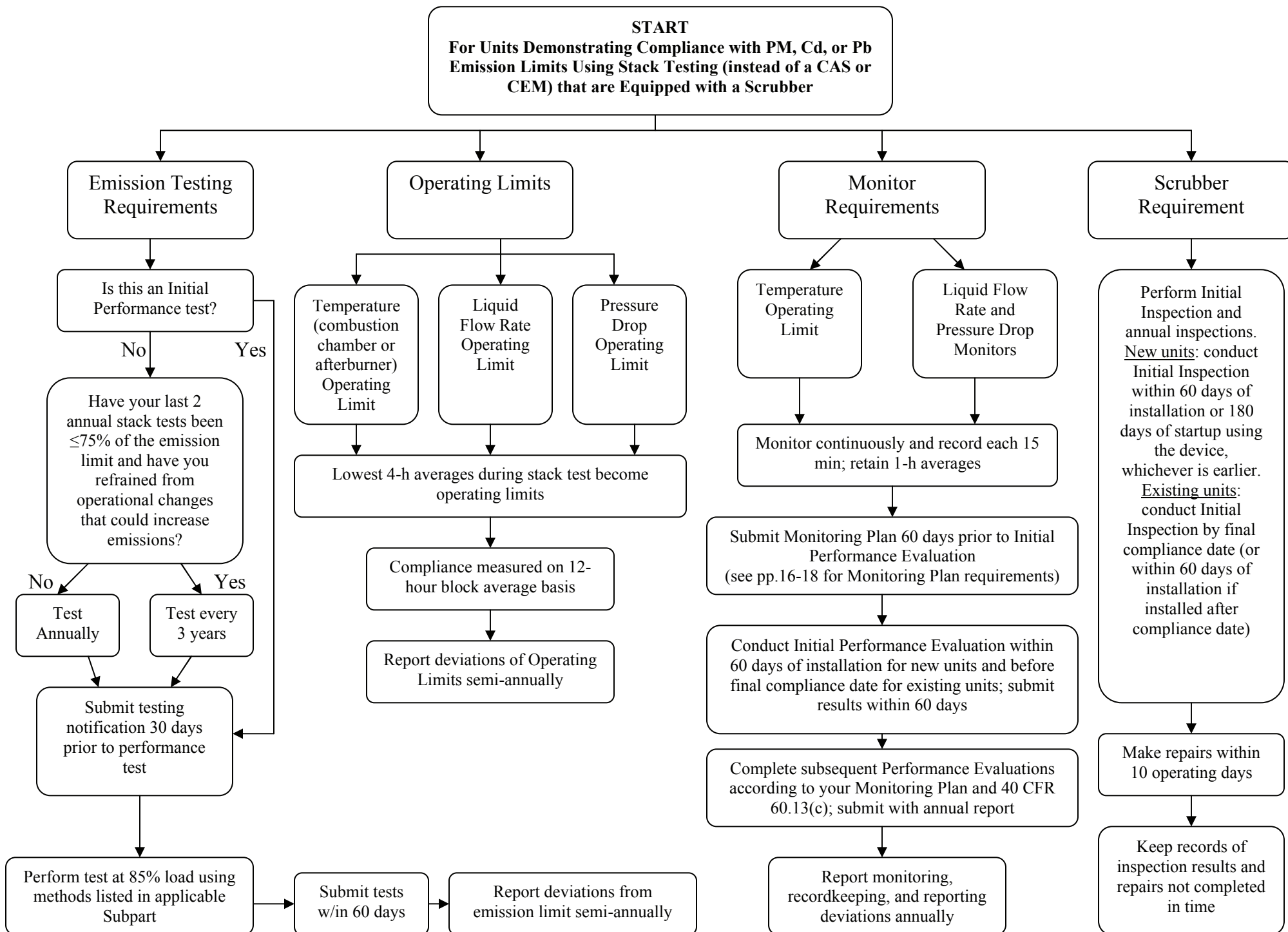




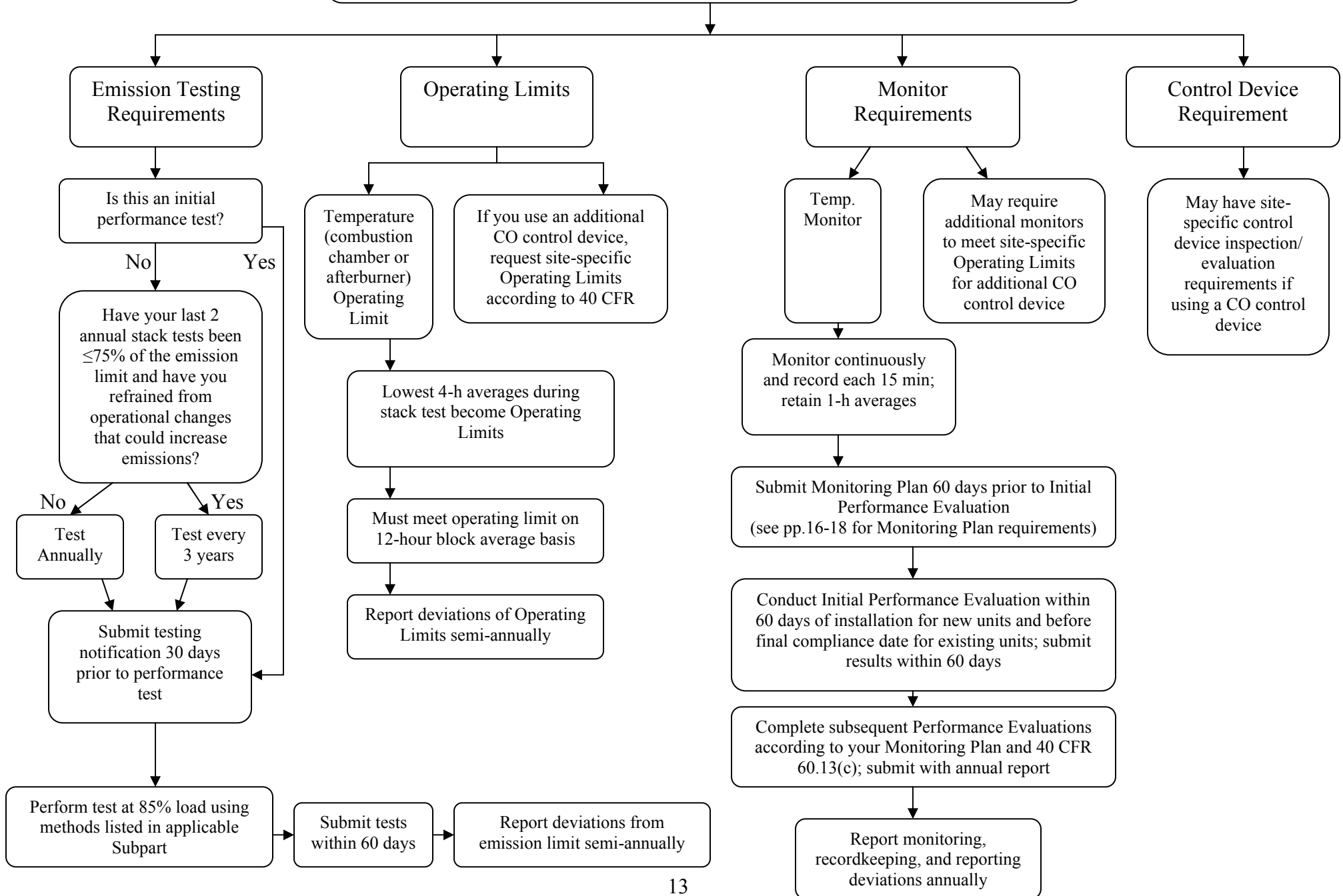


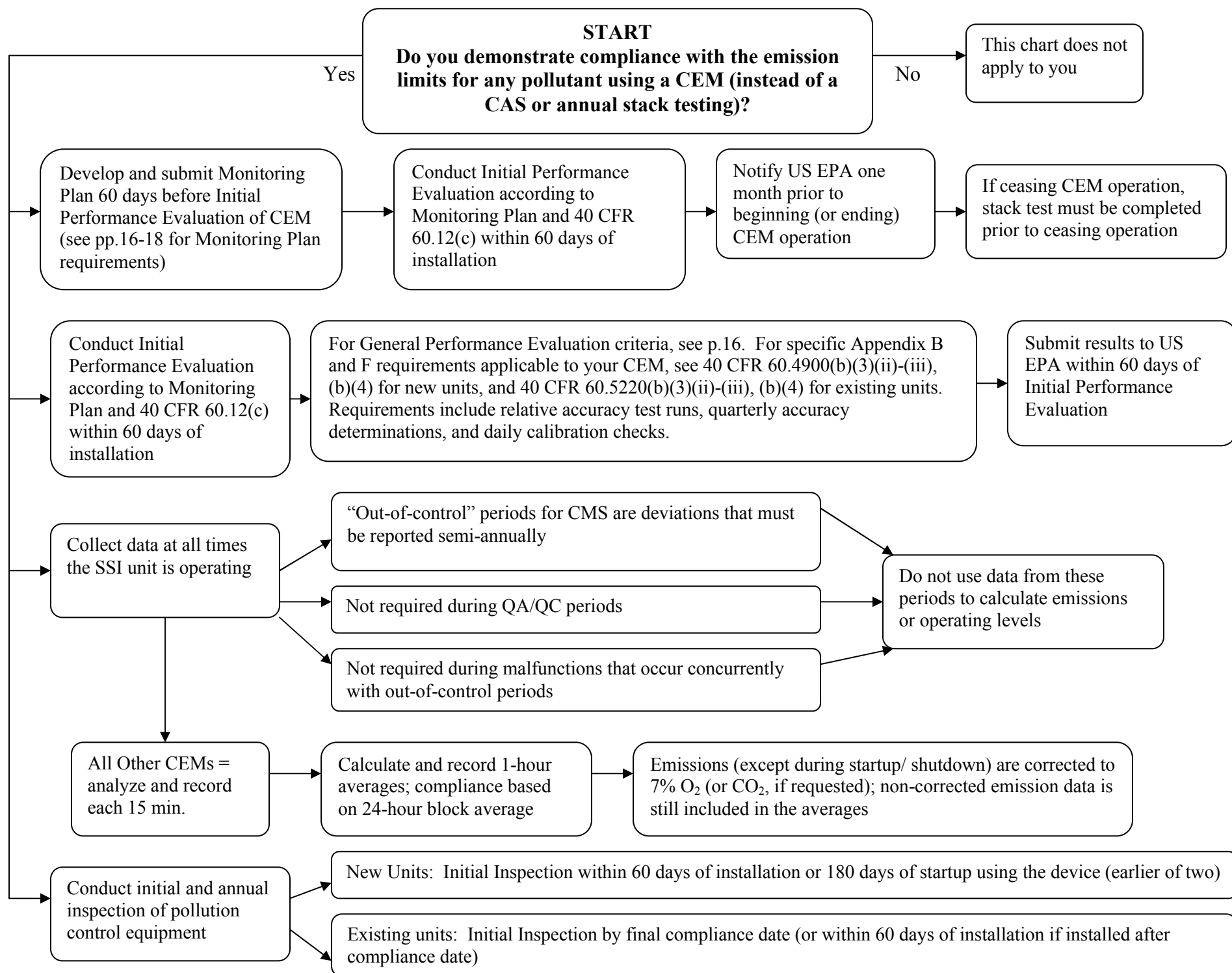






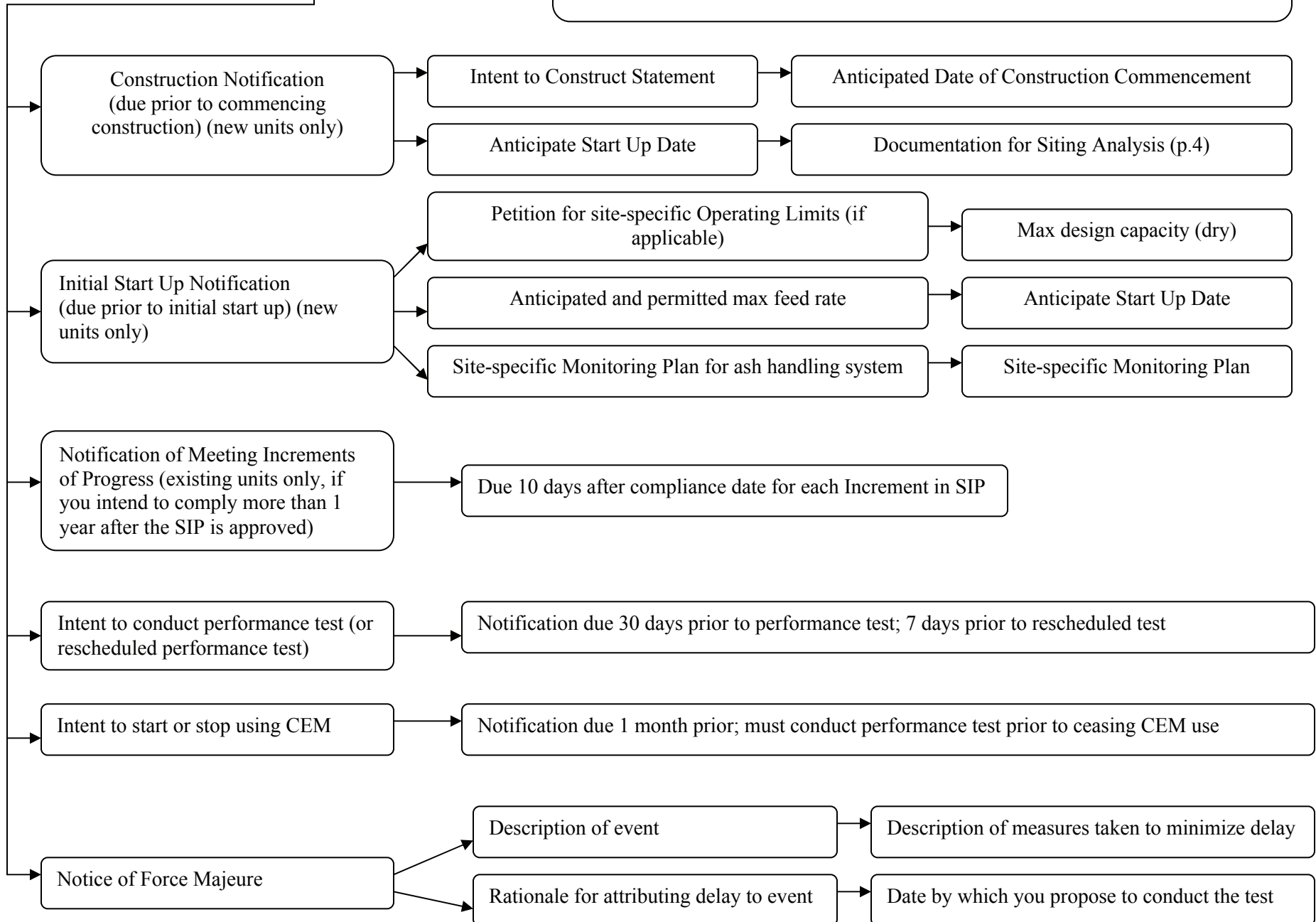
**START**  
**For Units Demonstrating Compliance with CO Limit Using Performance Testing (instead of CAS or CEM)**  
**\*option for existing units only – new/modified units must use CEM\***

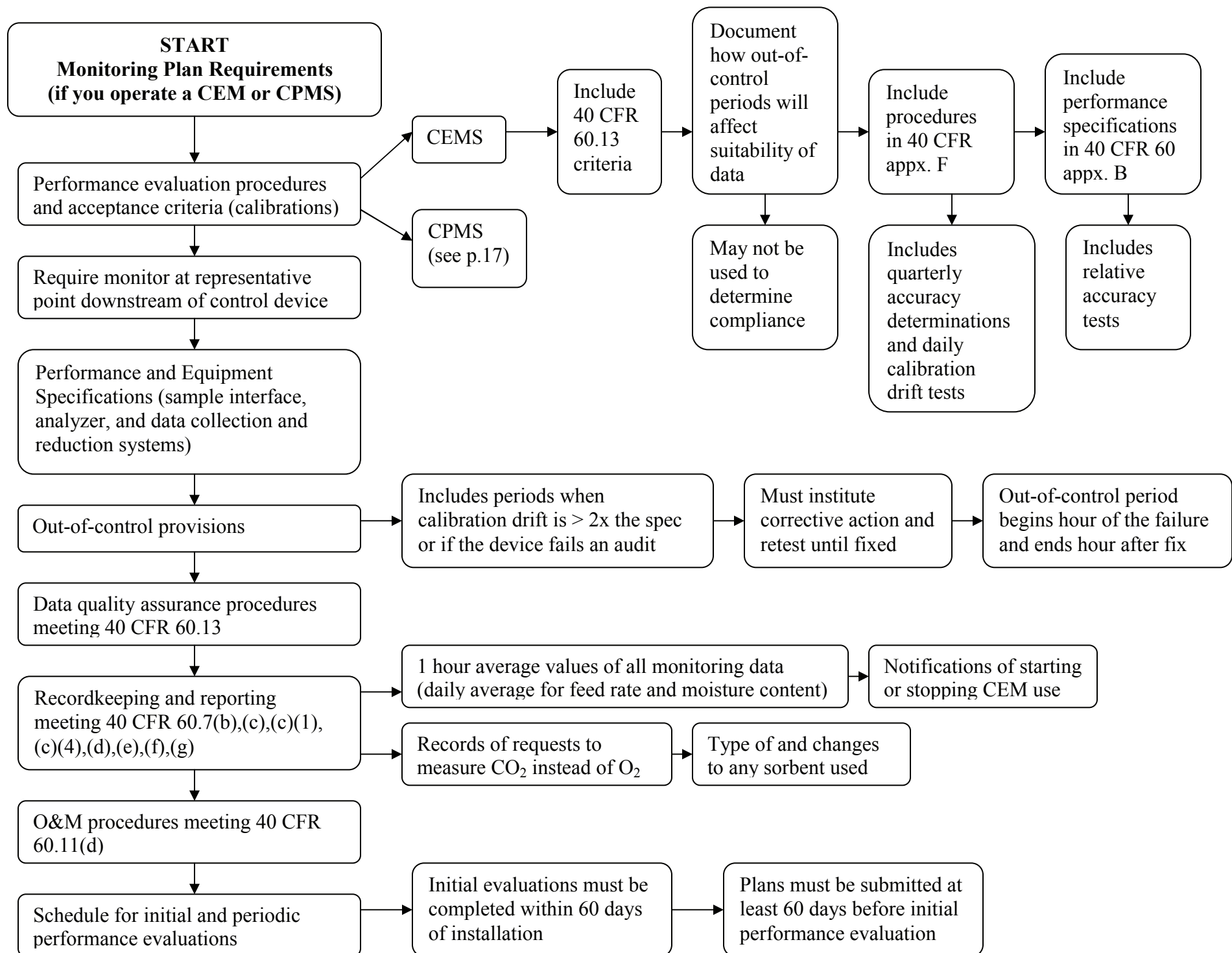




**START**  
**General Notification**  
**Requirements**

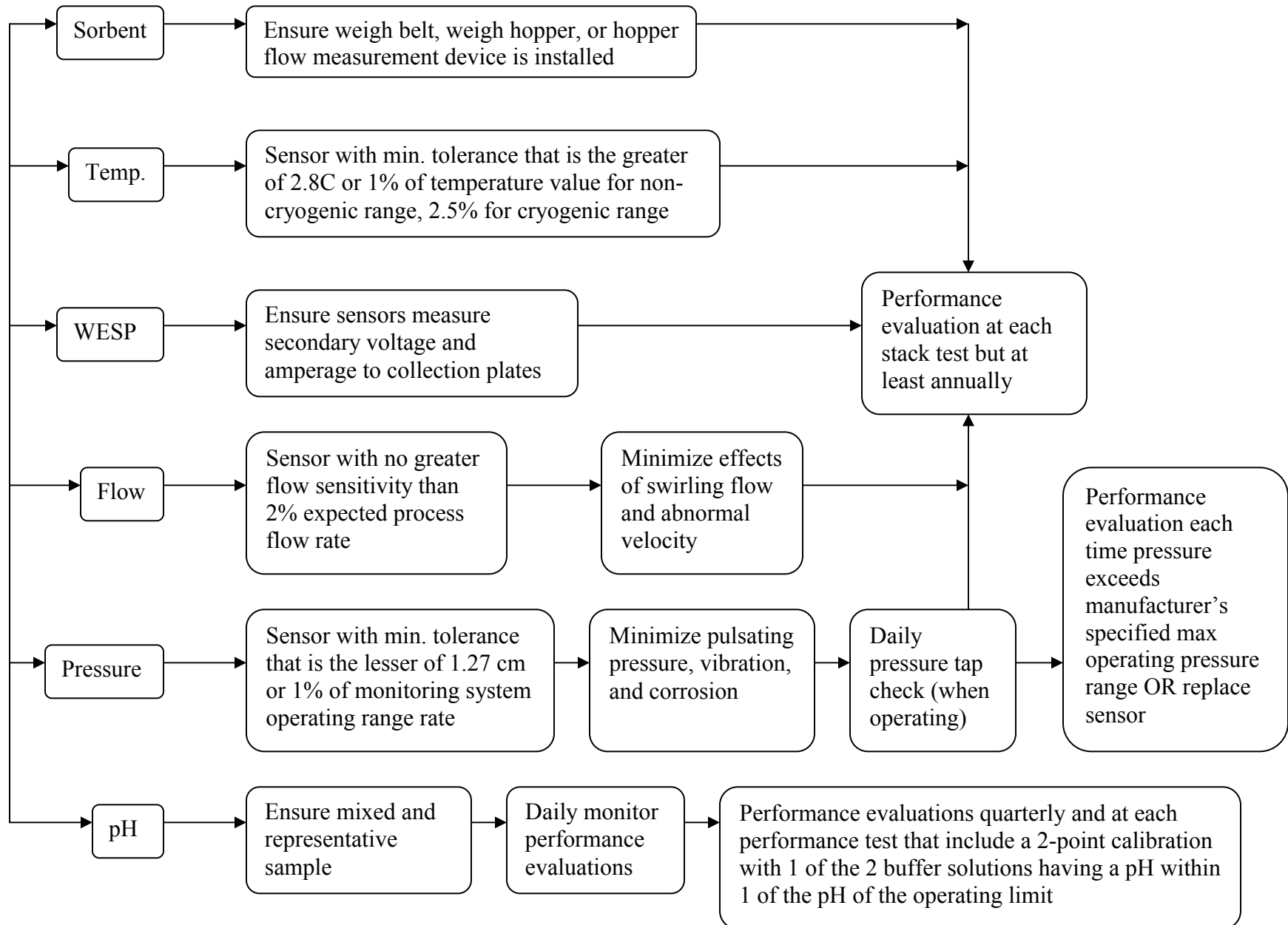
**\*\*Note that these notification requirements do not include annual or semi-annual reports or notifications associated with deviations or malfunctions. Those requirements are addressed in the Reporting (pp.23-24), Malfunction (p.25), and Operator Training (pp.20-22) charts\*\***

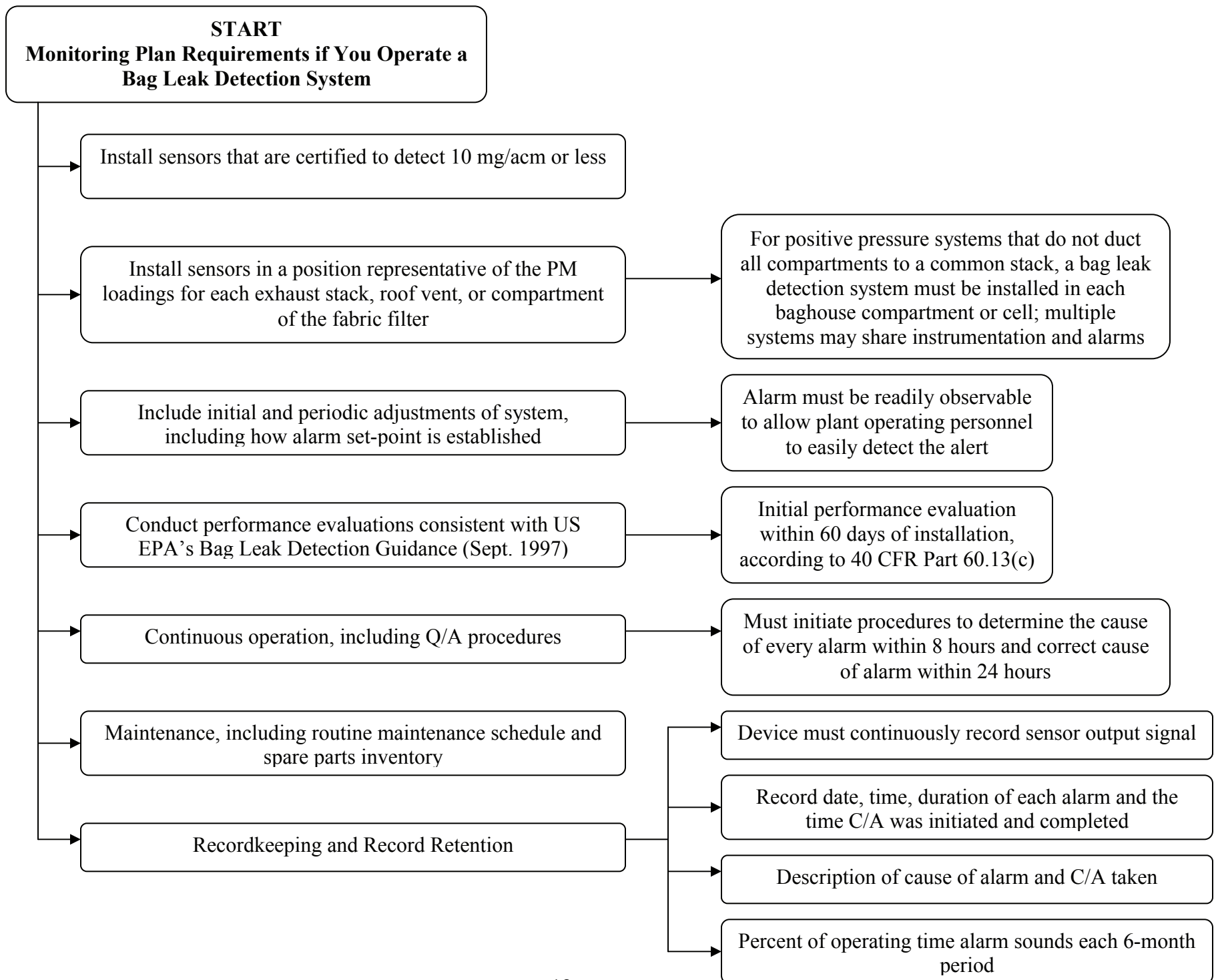


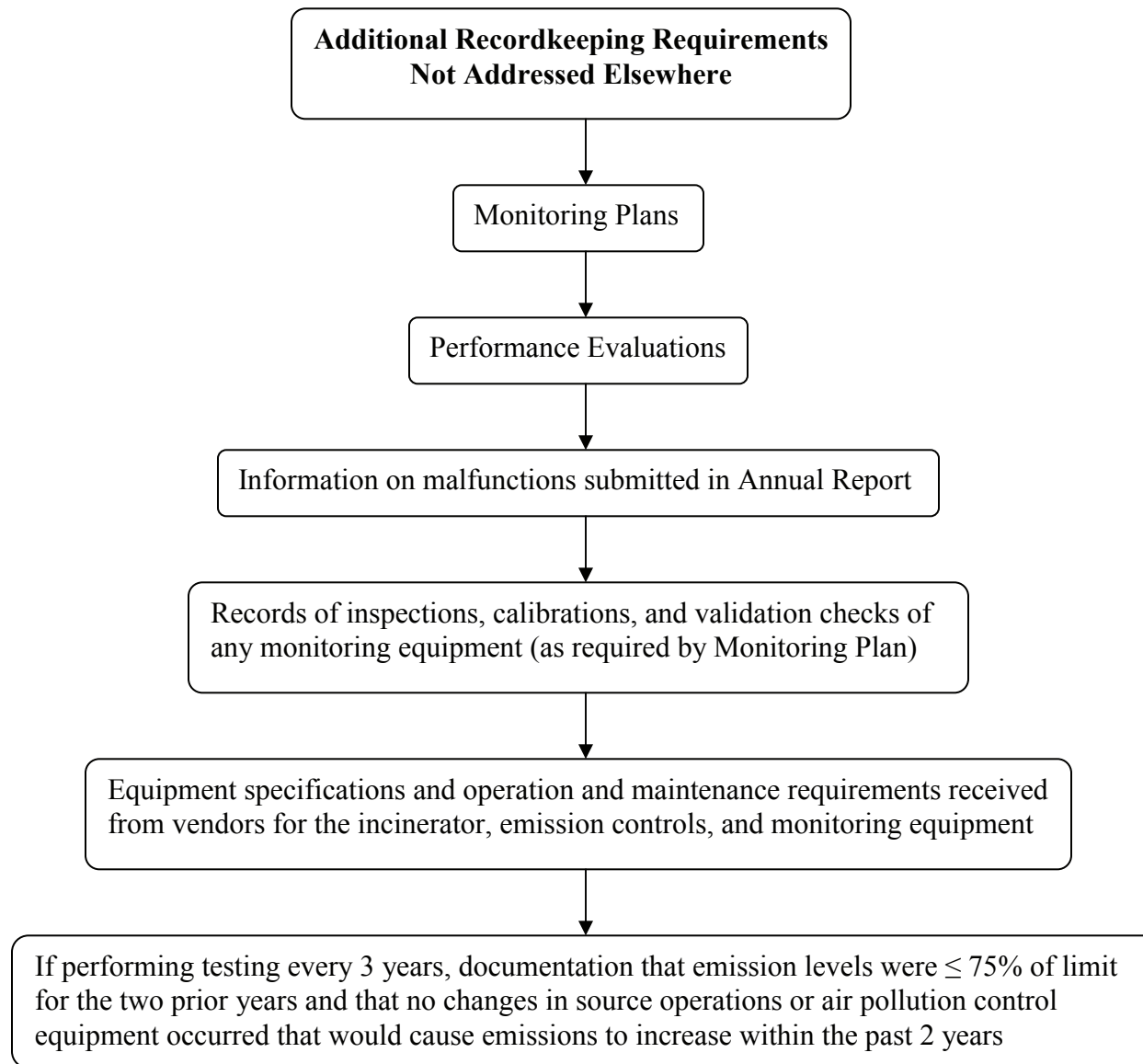


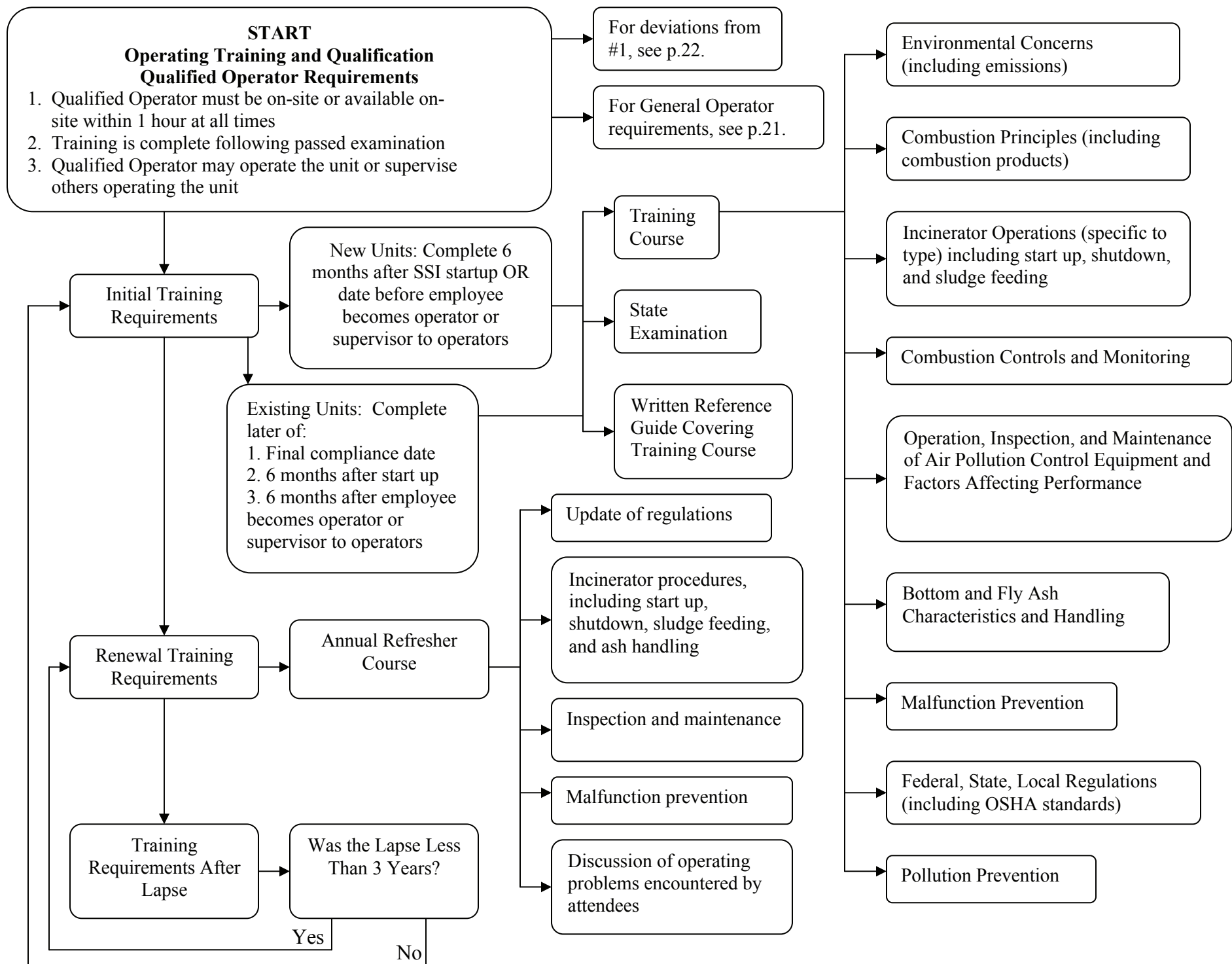


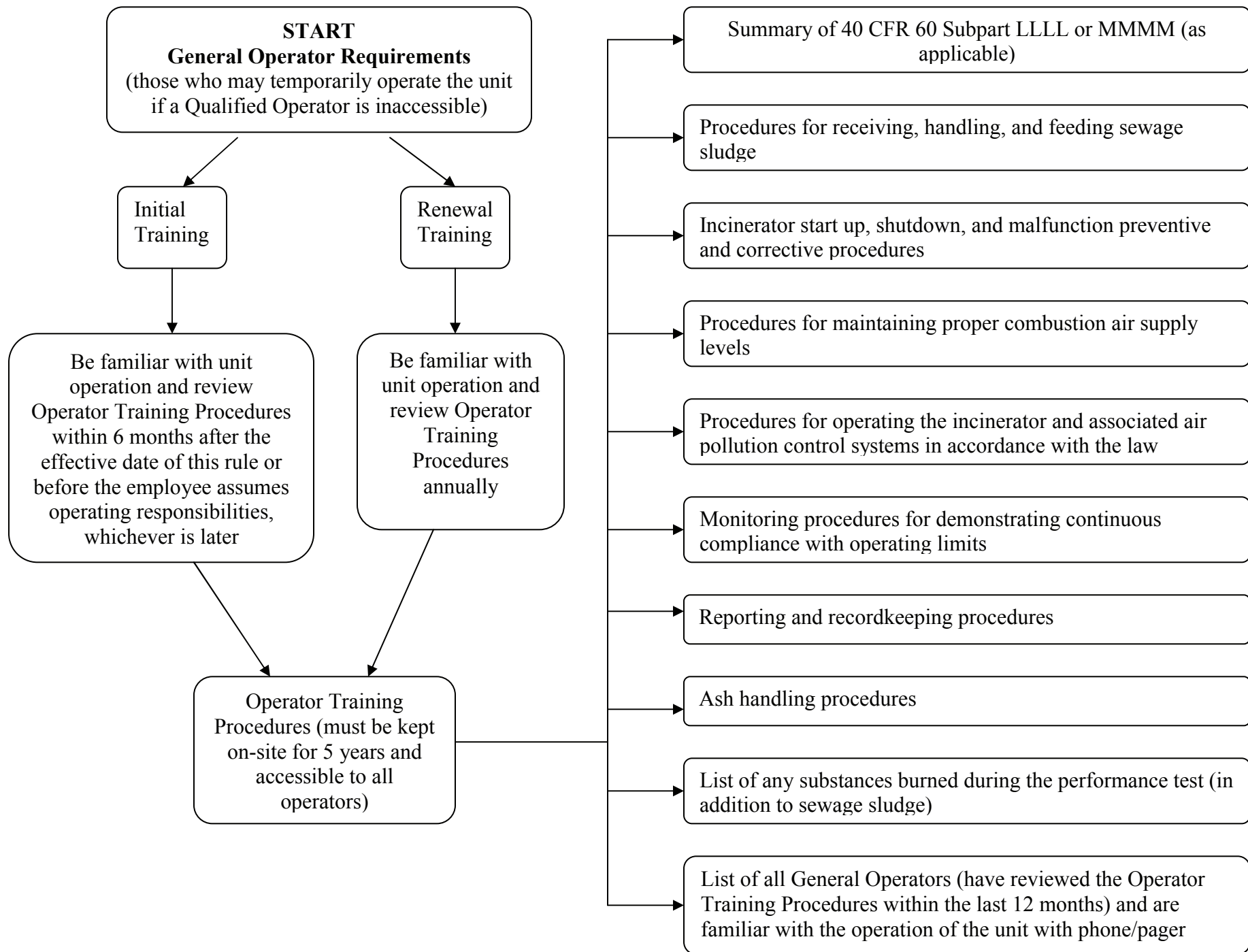
**START**  
**Monitoring Plan Requirements**  
**Performance Evaluation Procedures for CPMS**

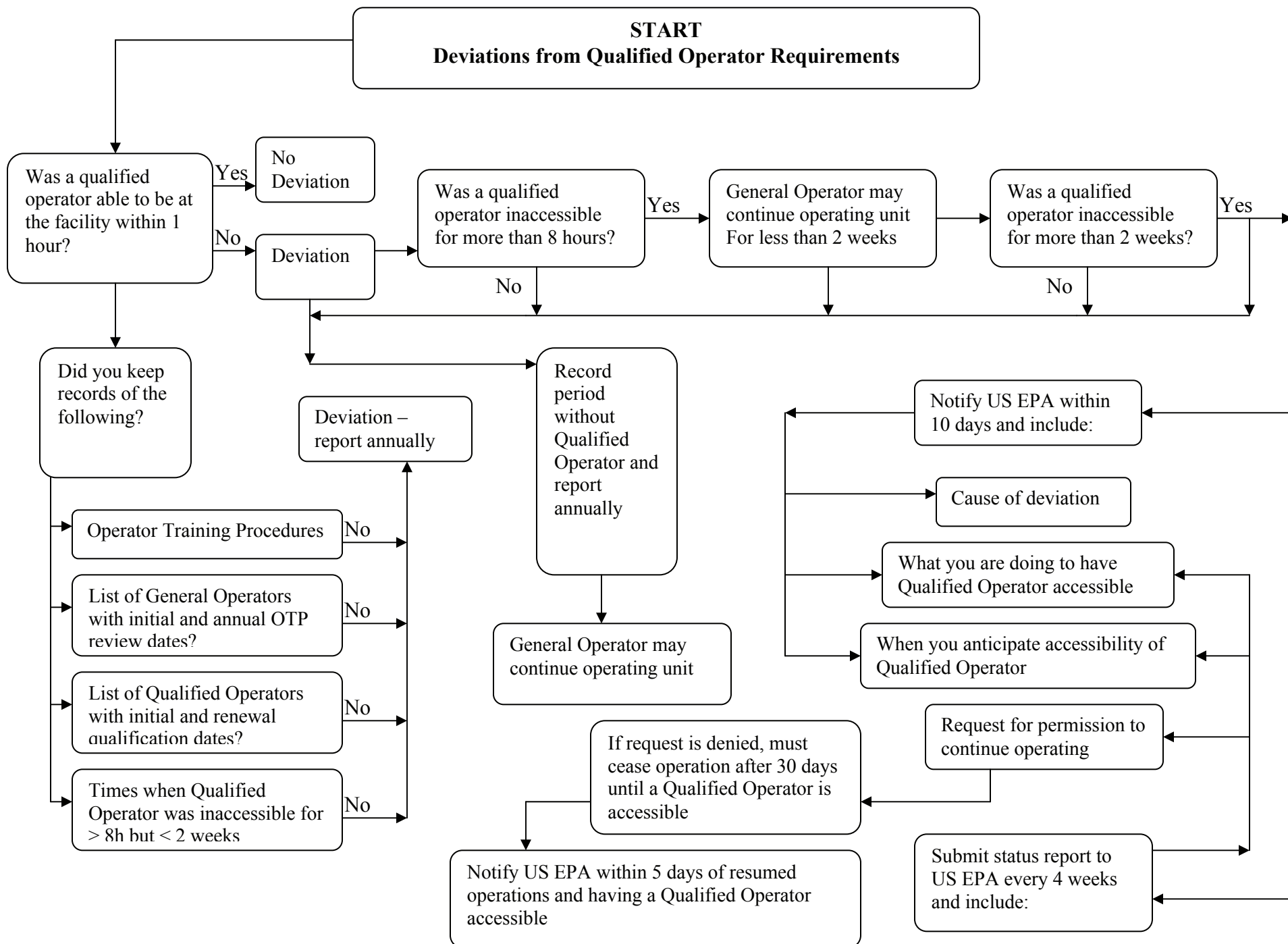


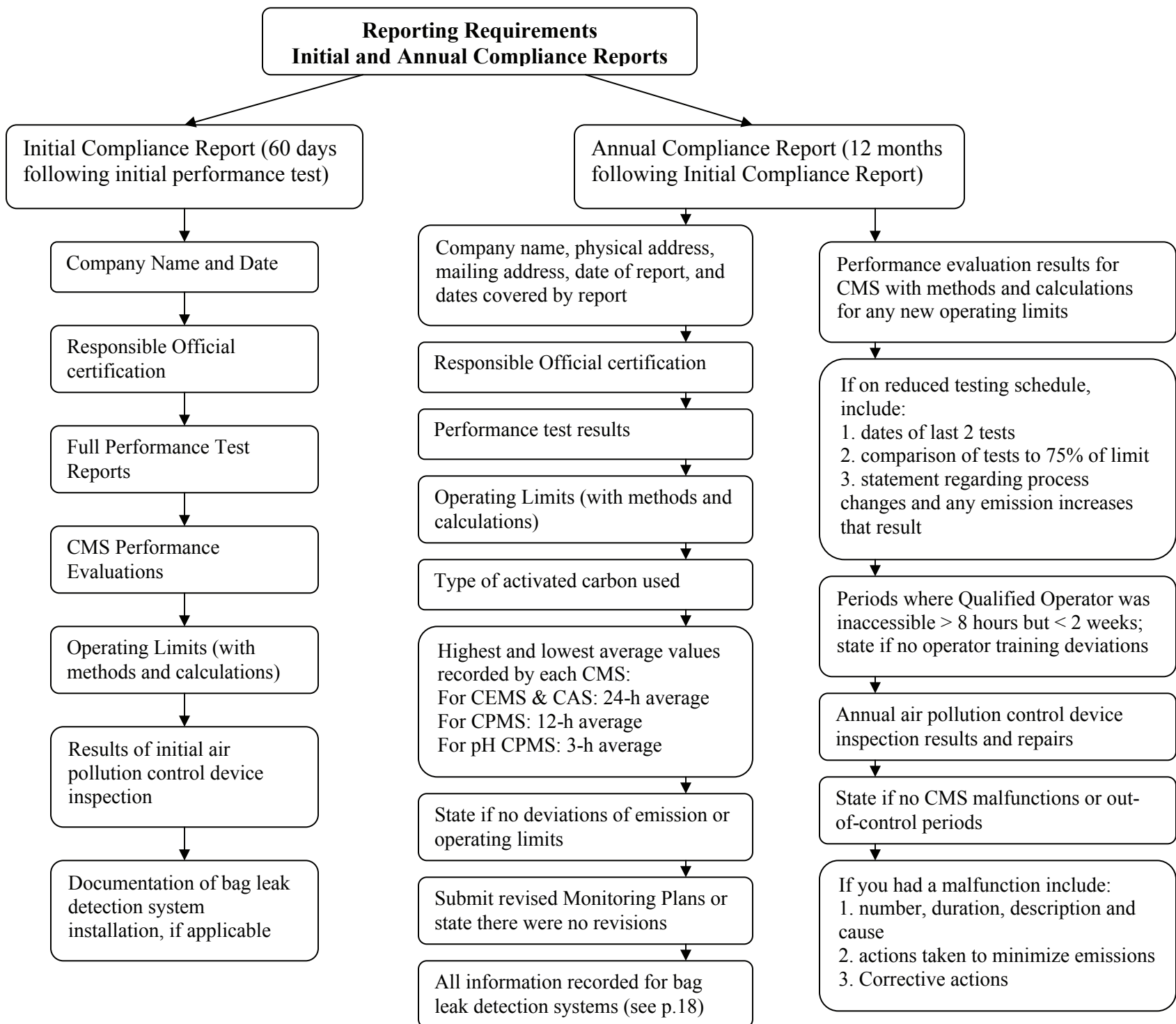












**Reporting Requirements**  
**Semiannual Deviation Reports**  
(submit Feb. 1 and July 1)

