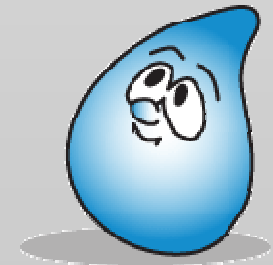


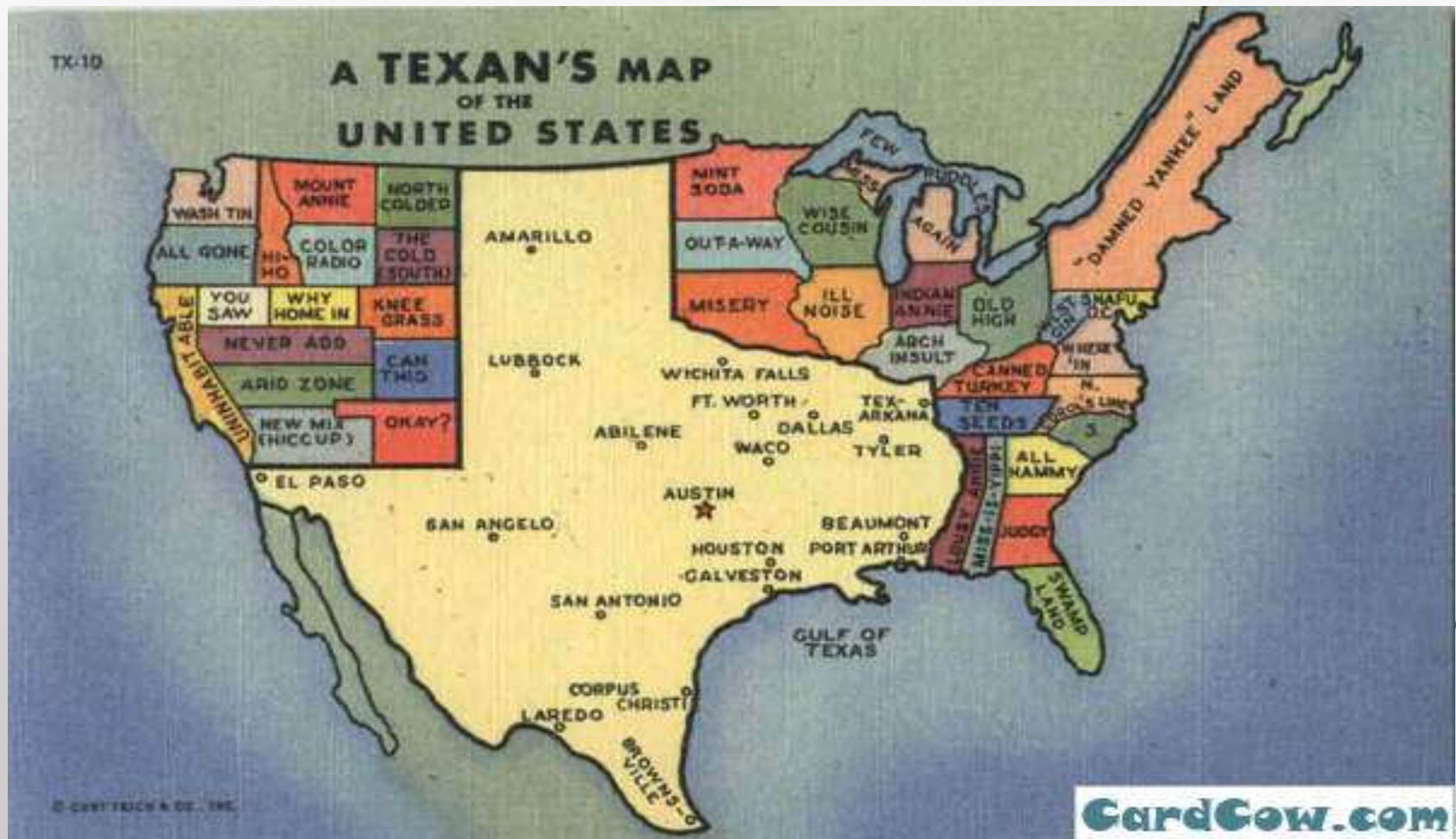
IT JUST KEEPS GROWING AND GROWING . . .



SIZE MATTERS



EVERYTHING'S BIGGER IN TEXAS



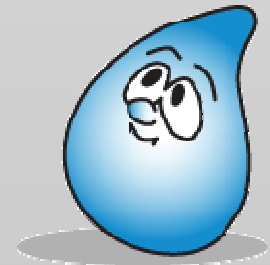
**IF YOU COME TO A FORK IN THE
ROAD, TAKE IT.**

Yogi Berra

Lisa E. Hollander
NACWA Winter Conference 2010
February 4, 2010



Northeast ohio regional sewer district



Territory and Service Area

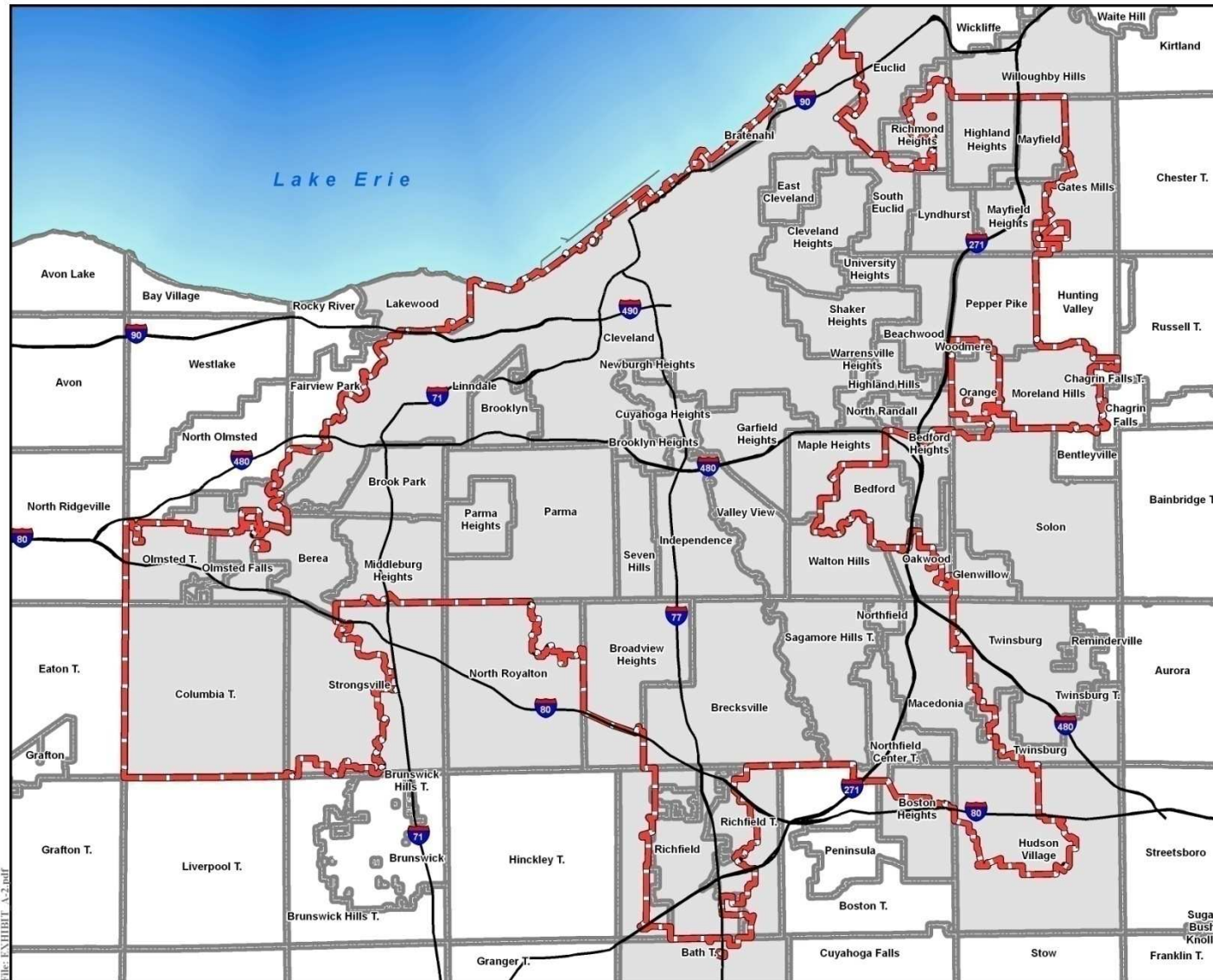
January 7, 2010

Legend

- NEORS Service Area Boundary
- NEORS Territory



3
Miles



File: EXHIBIT A-2.pdf

This map was compiled by the Northeast Ohio Regional Sewer District, which makes every effort to produce and publish the most current and accurate information possible. This map was created and compiled to serve the District for planning and design purposes. The District makes no warranty, expressed or implied, with respect to the accuracy of this map and its use for any specific purpose. The District and its employees expressly disclaim any liability that may result from the use of this map. For more information, please contact: Betty Youngling, P.E. (Stormwater Program Manager) or Jeffrey Davis, P.E., GMP (Engineering Technical Services) 3900 Euclid Avenue, Cleveland, Ohio 44122 (216-383-6000).

Project: Stormwater Management Program
 Sources: NEORS, 2009;
 Cuyahoga County;
 Summit County

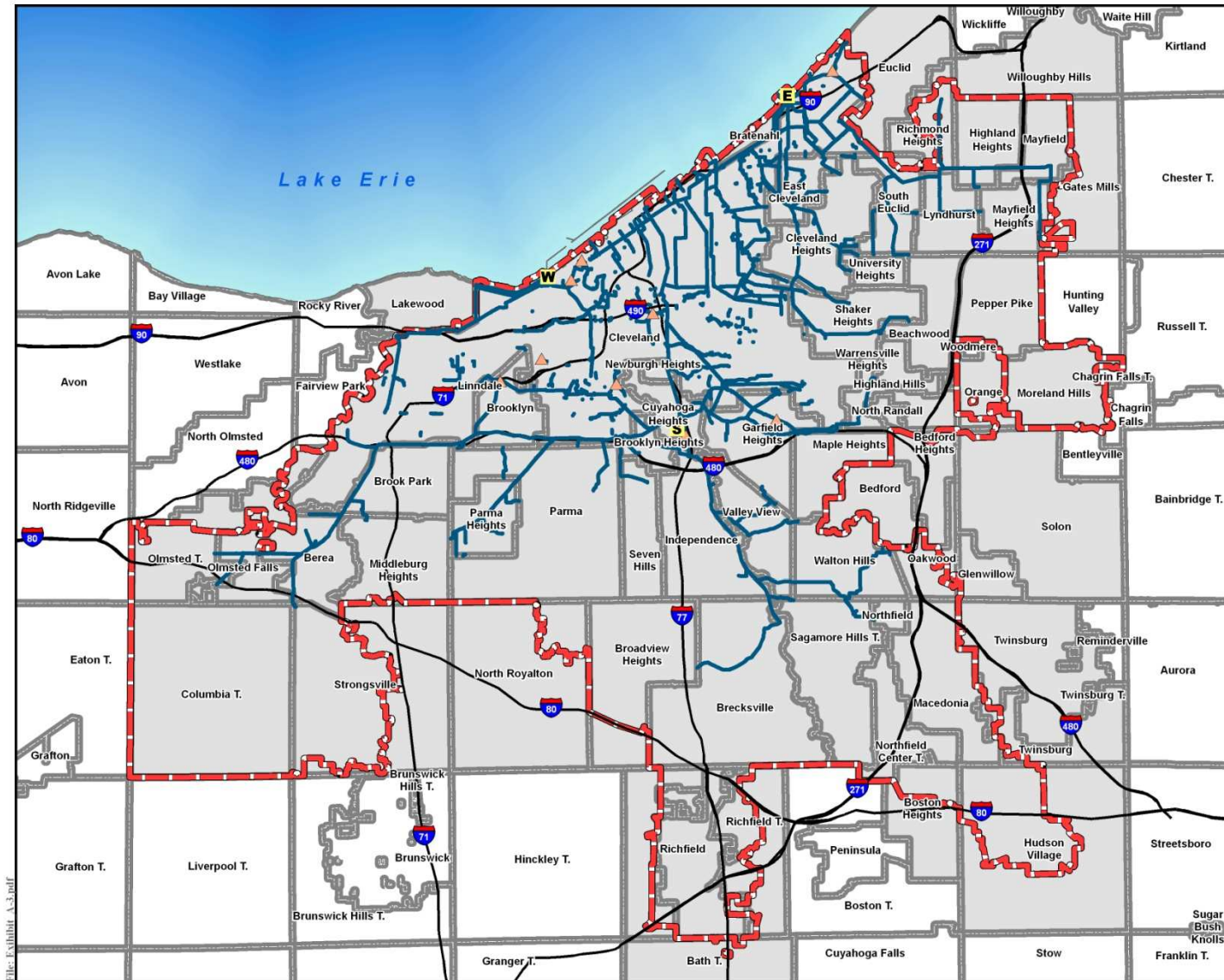


Regional Sanitary Sewage Collection and Treatment System January 7, 2010

Legend

- E** EASTERLY WWTP
- S** SOUTHERLY WWTC
- W** WESTERLY WPCC
- District Pump Station
- District Sewer
- NEORSD Service Area Boundary
- NEORSD Territory

Miles



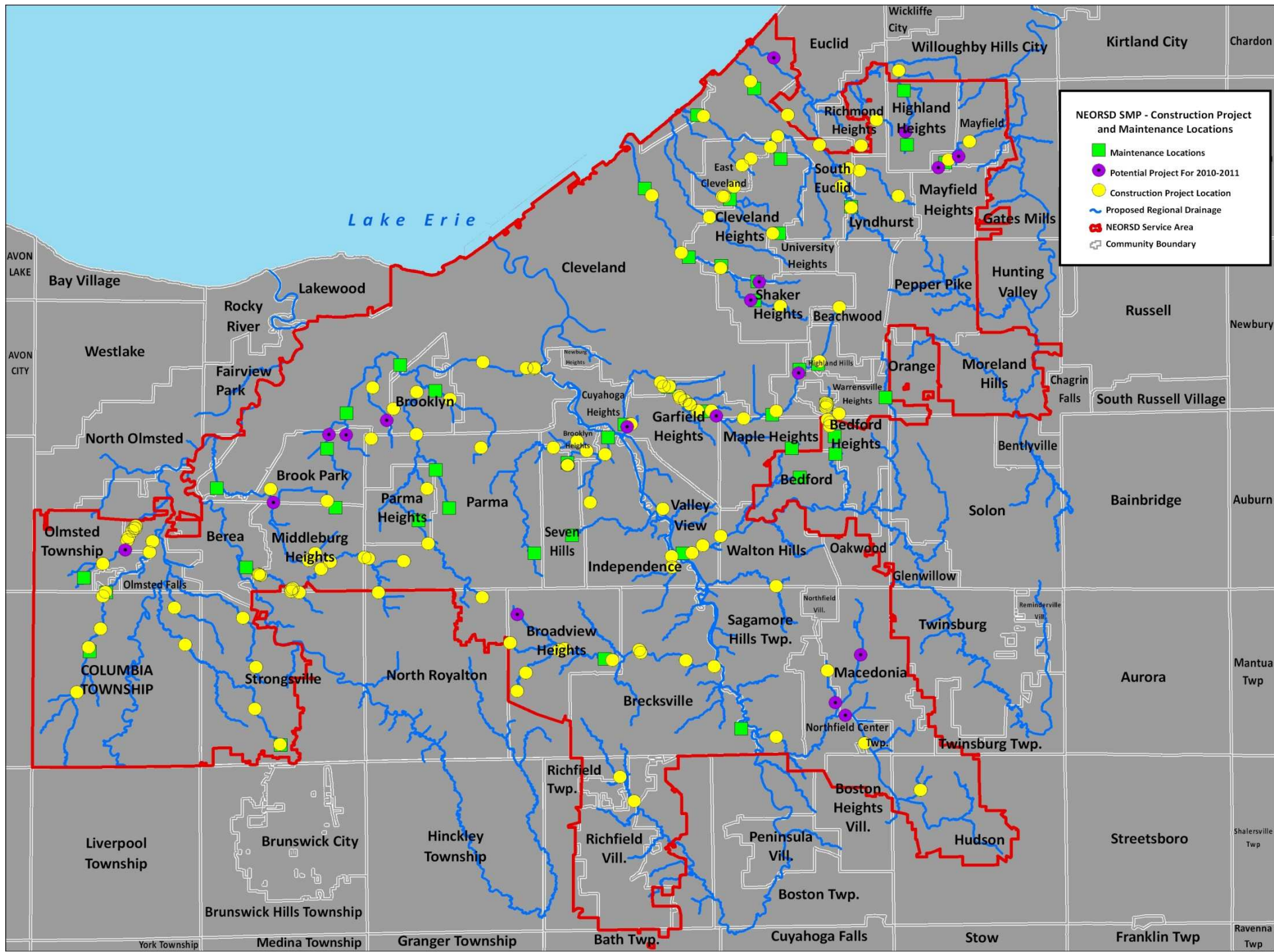
This map was compiled by the Northeast Ohio Regional Sewer District ("District") which is not responsible for the accuracy of the data or the use of the map. The District is not responsible for the accuracy of the data or the use of the map. The District is not responsible for the accuracy of the data or the use of the map. For more information, please contact: Emily Youngling, P.E. (Stormwater Program Manager) or Jeffrey Davis, P.E. (GIS/Engineering Technical Services) 3900 Euclid Avenue, Cleveland, Ohio 44115 (216-553-6000).

Project: Stormwater Management Program
Sources: NEORSD Collection System Map, 2010,
Cuyahoga County
Summit County



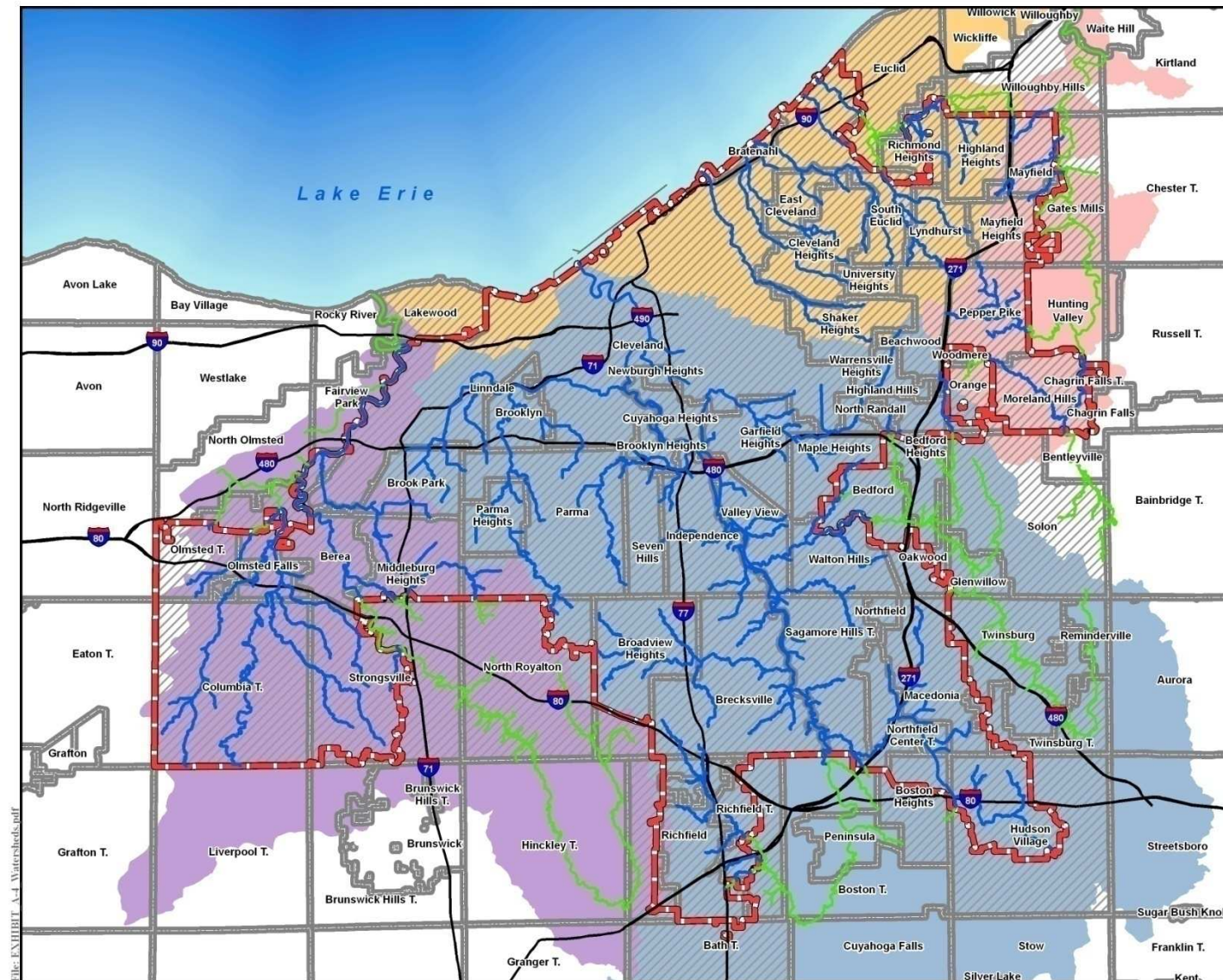
“... a capital improvement program for the solution of all intercommunity drainage problems (both storm and sanitary) in the District.”





Regional Stormwater System

January 7, 2010



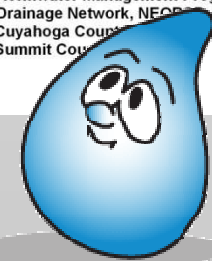
Legend

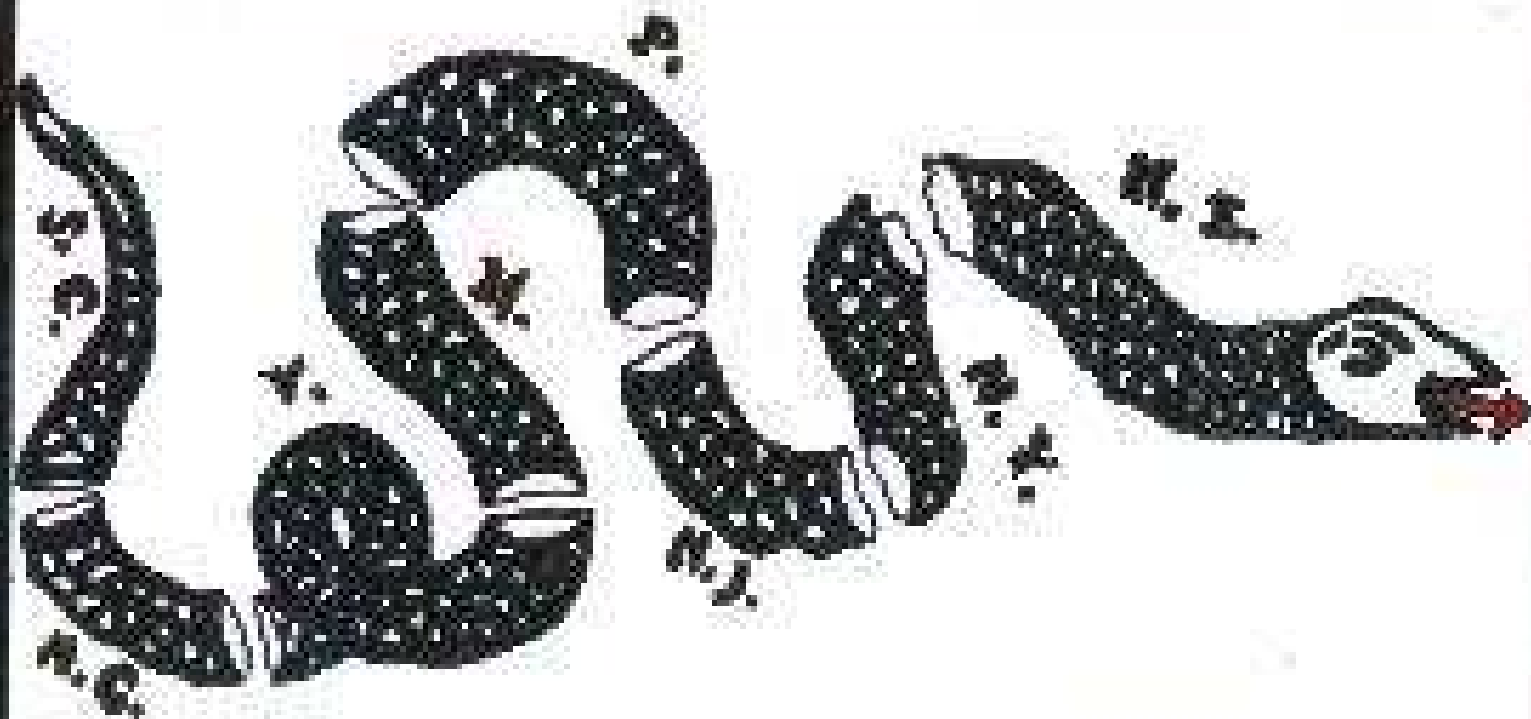
- Regional System In Service Area
- Regional System Not In Service Area
- NEORS Service Area Boundary
- NEORS Territory
- Chagrin River Watershed
- Cuyahoga River Watershed
- Lake Erie Direct Tributaries Watershed
- Rocky River Watershed



3
Miles

Project: Stormwater Management Program
 Sources: Drainage Network, NEORS 2002;
 Cuyahoga County
 Summit County

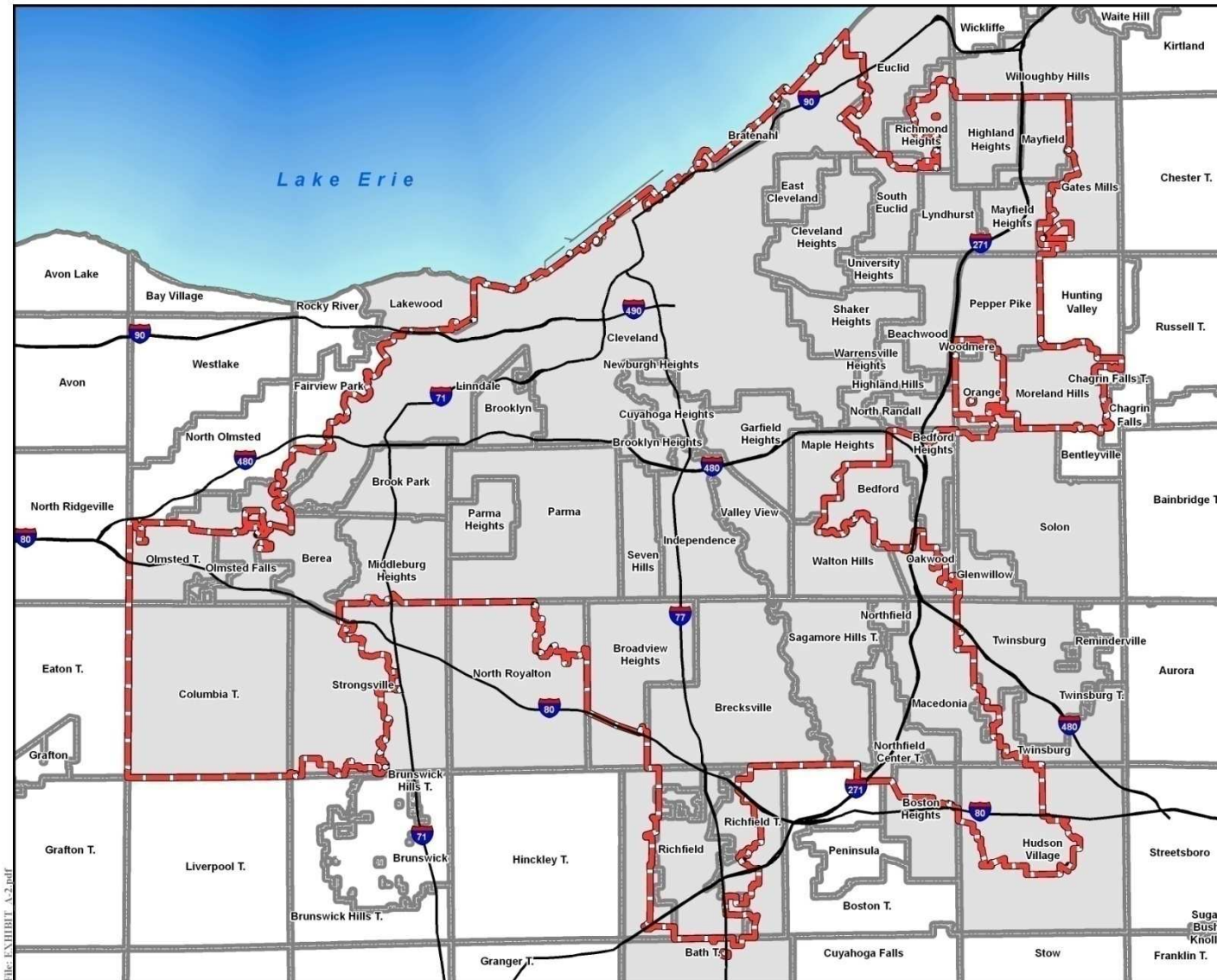






JOIN, or DIE.

Territory and Service Area

January 7, 2010

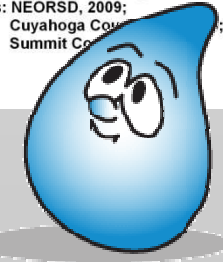


Legend

-  NEORS Service Area Boundary
-  NEORS Territory



Project: Stormwater Management Program
 Sources: NEORS, 2009;
 Cuyahoga County;
 Summit County





Lisa E. Hollander
Deputy Director of Law
Northeast Ohio Regional Sewer District

