



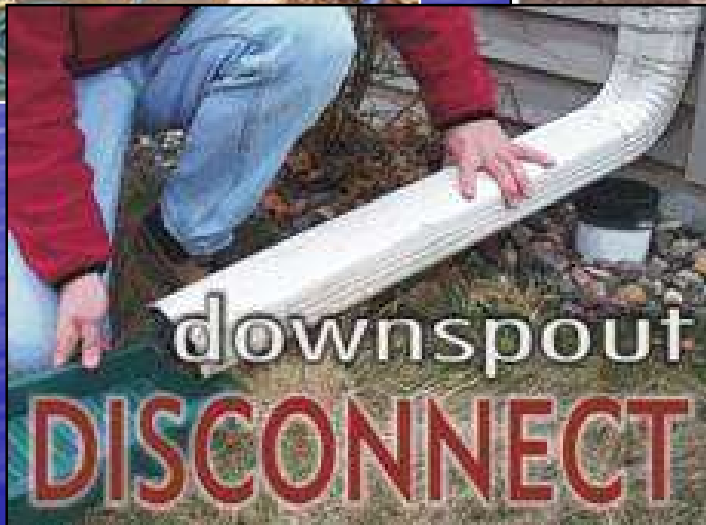
NACWA's 2009 Summer Conference in Milwaukee



I've talked
about how
great it is here
in July



And that we are
pursuing a **Green**
agenda



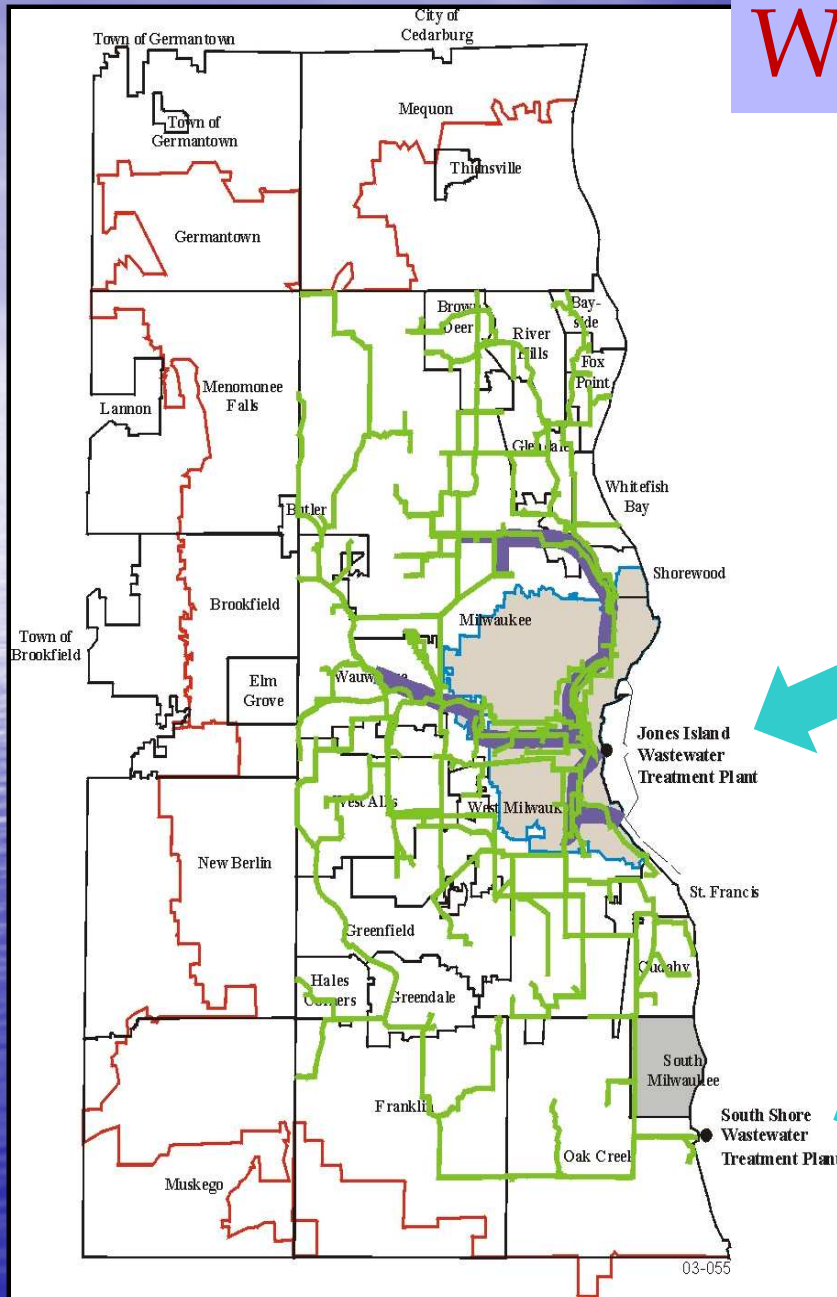
But just remember, it
isn't always **GREEN**
in Milwaukee



We all face many obstacles trying to
protect this resource



Wet Weather Challenges





2009

27th St. Deep Tunnel – 27 MG

1993 Original Deep
Tunnel – 405 MG

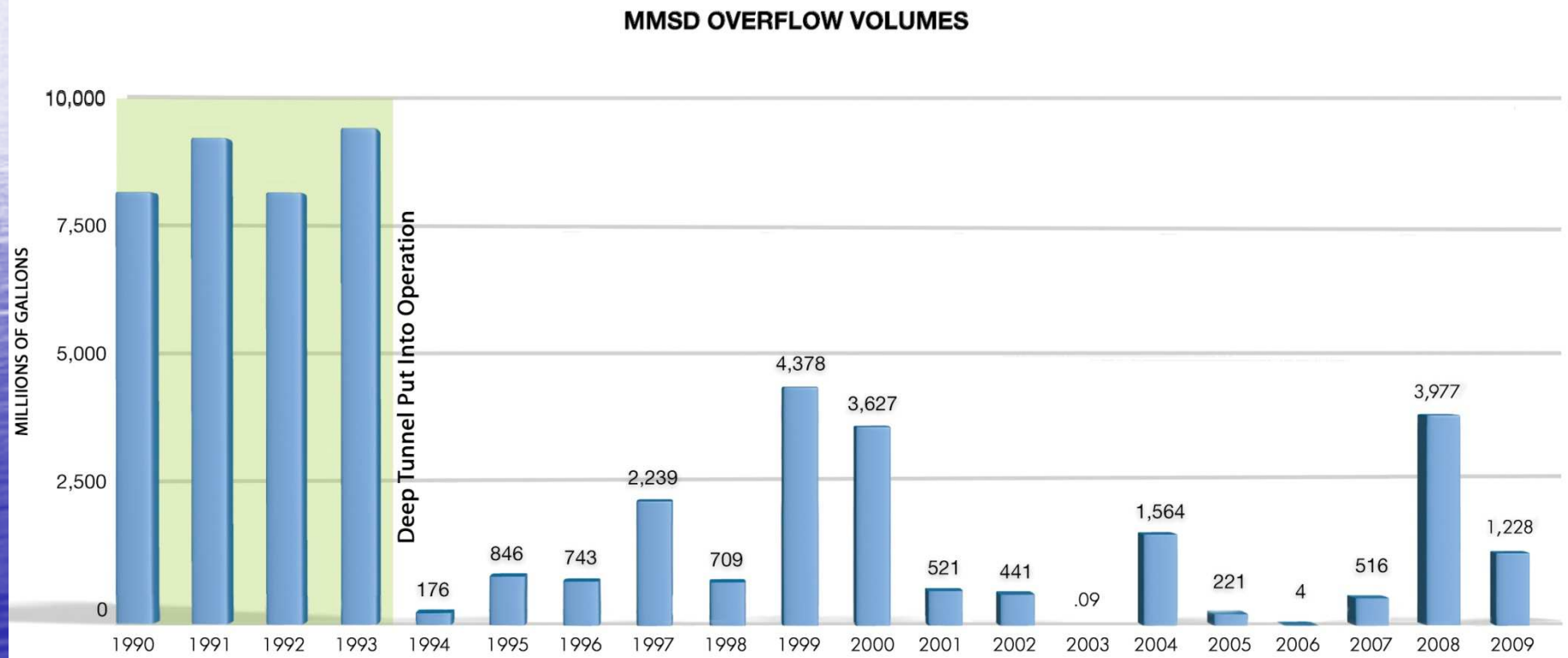


2006

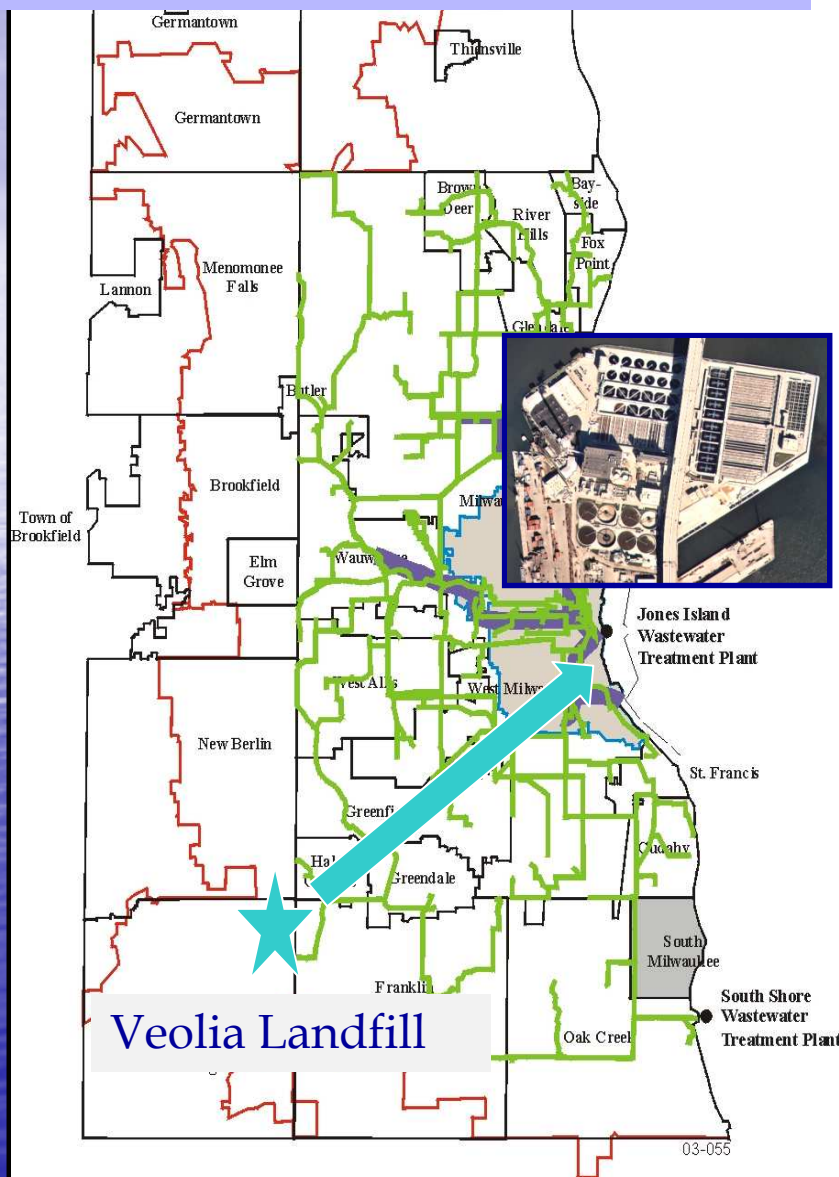
NWS Tunnel – 89 MG



Overflow Volumes



Climate Change

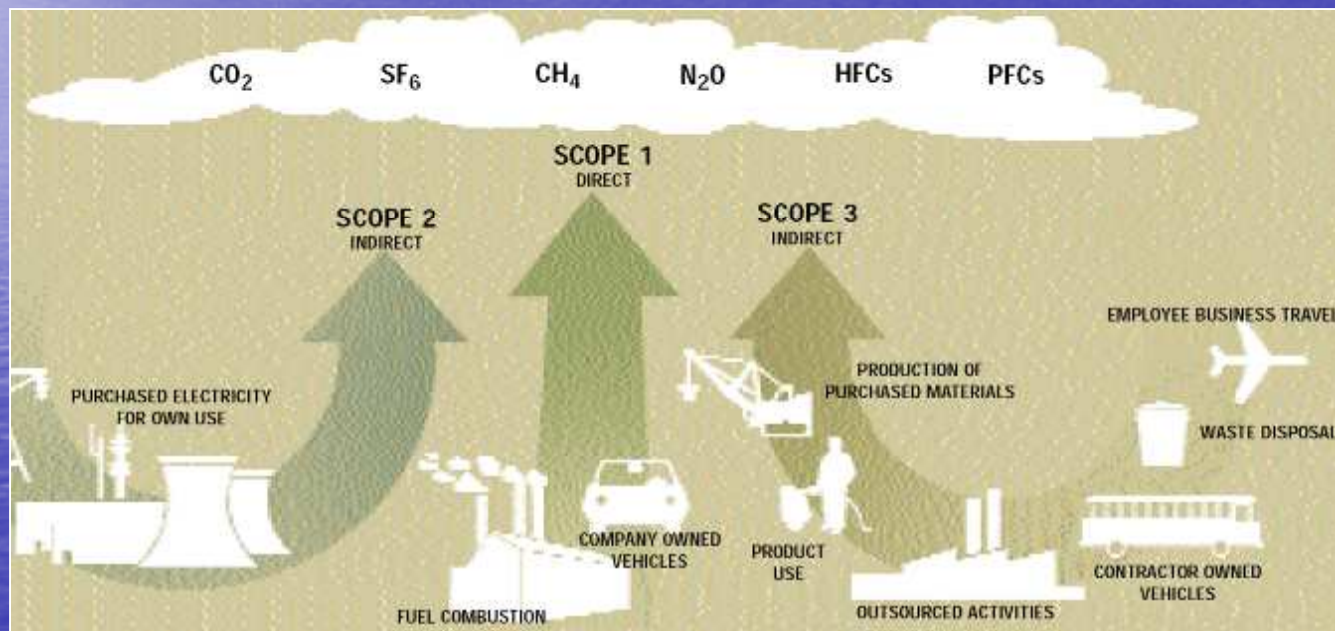


JI Power of the Future – Landfill Gas!

- By 2011, natural gas usage reduced by 90% JI
- By 2015, MMSD will generate all its own electricity at JI
- The entire project will reduce GHG by about 500,000 tons / year

Climate Change

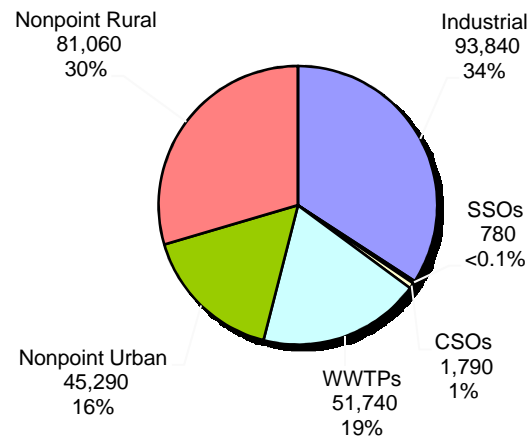
MMSD's Greenhouse Gas Baseline Study



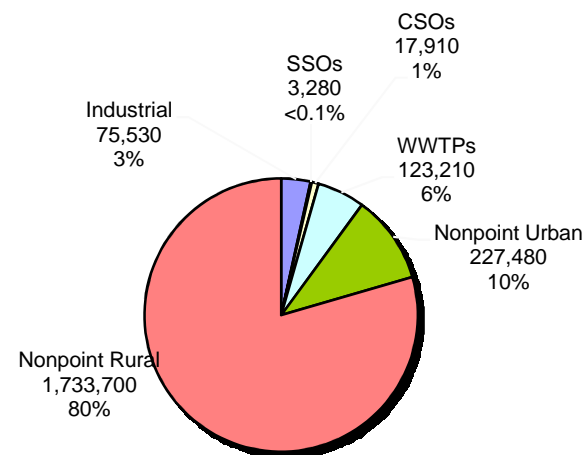
By 2015, the Landfill Gas Pipeline project will reduce the JI GHG stationary combustion emissions by 95%

Nutrients

**Milwaukee River Watershed - Existing (Year 2000)
Loads of Total Phosphorus (lbs/yr)**



**Milwaukee River Watershed - Existing (Year 2000)
Loads of Total Nitrogen (lbs/yr)**



Flood Management Lincoln Creek

Before



After



Naturalizing our
waterways

Hart Park Flood Management



Greenseams



1,848 Acres Since 2002
\$13.4 Million
Grants: \$5.2 Million

Public Education



Milwaukee River Flushing Station

mini Rain barrels

Green Infrastructure



More than
12,500
SOLD



11,246
Plants sold since 2005



Green Roofs

A photograph showing a large-scale green roof installation on a flat rooftop. The roof is covered with numerous rectangular planters, each filled with a mix of green and brown vegetation. The planters are arranged in a grid-like pattern, separated by narrow concrete walkways. In the background, a city skyline is visible under a clear blue sky. Several prominent buildings are identifiable, including a tall, ornate building with a clock tower on the left, a dark blue building with 'CHASE' signage, and a tall, modern glass skyscraper on the right. The overall scene illustrates a sustainable urban infrastructure project.

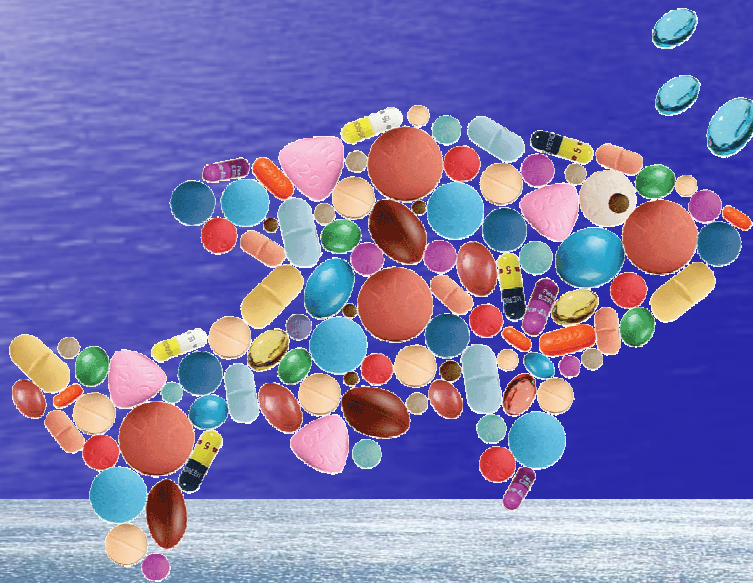
Milwaukee has over 3 acres
of green roofs installed

Pharmaceuticals

Medicine Collection Day

Total Collected Since 2006(actually in 16 hours):

Over 10 tons collected



Biosolids

Waste to Energy Study



Watershed Approach

Southeastern Wisconsin Watersheds Trust




Editorial: Watershed trust can be a force for regional unity

- Milwaukee Journal Sentinel, May 4, 2008



Operations & Maintenance

A photograph of a large, circular wastewater treatment tank. The tank is filled with water, and a central weir is visible, with water cascading over its edge. The concrete walls of the tank are visible, and the water surface reflects the sky and surrounding structures.

“Hiring the private company, rather than the district doing the job on its own, will save customers in 28 communities at least \$35 million over the next 10 years...”

- Milwaukee Journal Sentinel
Dec. 3 2007

So how are we going to
pay for all this?

1. Stimulus ?
2. State Aid ?
3. Federal Earmarks ?
4. Private Financing ?
5. Local Rates ?
6. Clean Water Trust Fund ?



MMSO



Preserving The Environment •
Improving Water Quality