

# Developing Effective Stakeholder Led Total Maximum Daily Loads

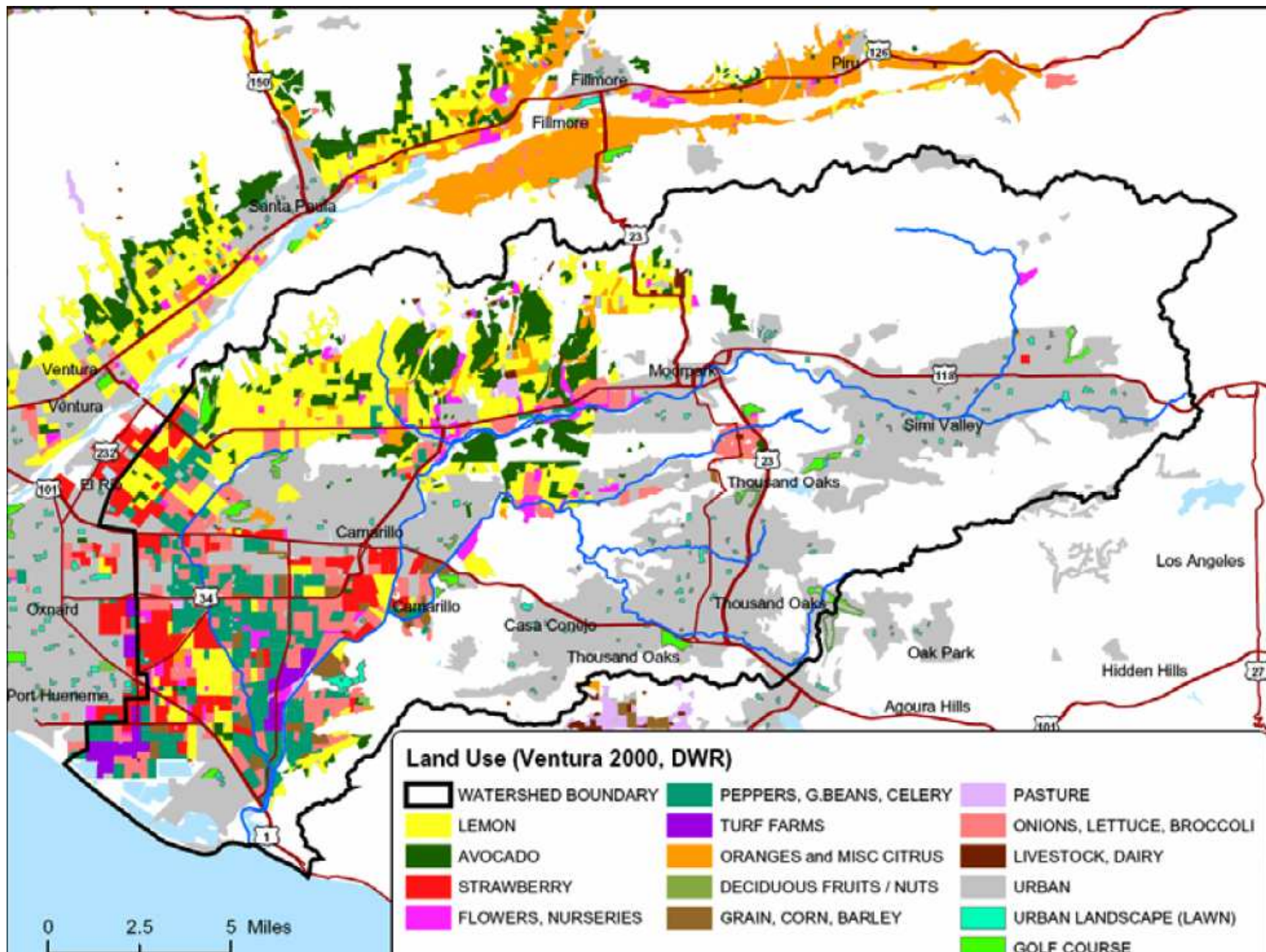
Presented by Ashli Desai  
Larry Walker Associates



# Presentation Outline

---

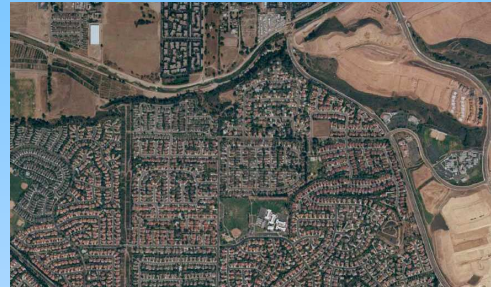
- Background on Calleguas Creek Watershed
- Why Develop Stakeholder-led Total Maximum Daily Loads (TMDLs)?
- Making the TMDLs Work
- Lessons Learned and Benefits
- Questions





# Calleguas Creek Management Plan (CCWMP)

- CCWMP created in 1996
- Diverse group local Stakeholders
- Purpose
  - Manage future demands on the watershed.
  - Protect, enhance and restore biological and cultural resources.
  - Develop water quality improvement actions
  - Encourage stakeholders to get involved and provide a permanent forum for co-operative decision-making.



# CCWMP Structure



# TMDLs in Los Angeles Region

---

## ■ Consent Decree

- Between EPA and 3 Environmental Groups
- 92 TMDLs for over 650 listings
- Need to be developed by 2012

## ■ Calleguas Creek has 8 TMDLs for 28 constituents

- Salts
- Toxicity
- Bacteria
- Trash
- Organochlorine Pesticides and PCBs
- Nutrients
- Metals
- Sedimentation/Siltation

# Motivation for Developing Stakeholder- Led TMDLs

---

- **Consent Decree forced TMDLs to be a priority**
- **First TMDL developed problematic (chloride)**
  - Lack of watershed understanding
  - Scientific deficiencies
  - Significant costs for implementation
- **CCWMP wanted to be proactive**
  - Avoid similar problems in remaining TMDLs
  - Committed to develop TMDLs using stakeholder process

# Making the TMDL Work-Issues

---

- **Issues imposed by regulatory agencies**
  - Precedent
  - Allocations for NPDES permit holders
- **Stakeholder ideas-how to make them legal?**
  - Effective watershed-based implementation programs vs. TMDL requirement to meet water quality objectives
  - Implementation plan coordination



# Making the TMDL Work-Solutions

---

- **Regular and consistent communication with regulatory agencies**
  - Buy-in from management
  - What does the regulatory agency have to do?
- **Present alternative legal and regulatory solutions**
  - Site-specific objectives
  - Variable allocations
- **Develop scientific support for approach**
- **Find your own precedent (and read theirs)**
- **Compromise**

# Lessons Learned

---

- **Coordination with regulatory agencies is essential**
  - Communicate with staff at all levels
  - Find your ally
  - Build trust
- **Strong and Diverse stakeholder group needed**
  - Needs strong leadership
  - Decision maker's involvement
  - Diverse stakeholder group
- **Precedent will be an issue**
- **Financial and time resources can be significant**
- **Flexibility and patience for an evolving process is important**

# Benefits

---

- **Proactive approach that incorporates local knowledge**
  - Opportunities to gather and incorporate more data and scientific knowledge
  - Alternative approaches can be explored
- **TMDL is understandable and less contentious**
  - 5 TMDLs successfully adopted and being implemented
- **Builds relationships**
  - Regulatory agencies
  - Within stakeholder group
- **Implementation actions coordinated**

# Questions

---

**Ashli Desai**  
**Larry Walker Associates**  
**[AshliD@lwa.com](mailto:AshliD@lwa.com)**  
**310-394-1036**